



Westgate Road, Beckenham | £315,000 LEASEHOLD

We are pleased to offer for sale this well maintained two bedroom ground floor maisonette in the heart of Beckenham a short walk to the High Street and Beckenham Junction that has proved a particularly good letting investment for the current owner for some years and can be sold with a tenant or with vacant possession. The property although requiring some updating to fully enhance it to its full potential was constructed to a good standard some years ago and as was common in this time the living accommodation compared to more modern apartments today in particularly spacious boasting a 24ft lounge / diner and a superb kitchen breakfast room that one could easily dine in. The bedrooms are equally well proportioned and of particular note are the rear patio garden and the private front garden of some 30ft ideal for that all important outside space. The lease is over 100 years and maintenance equally shared and with private garage to the rear your early attention to view

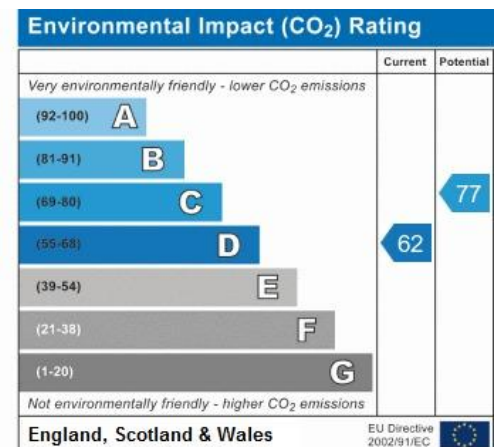
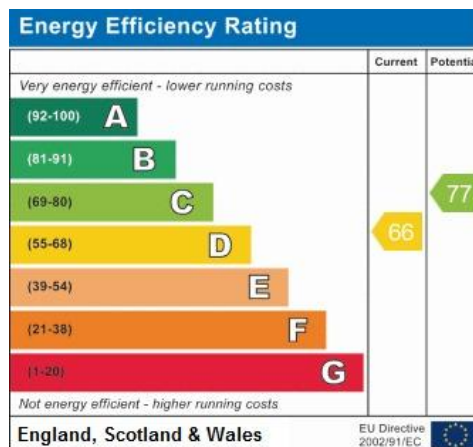
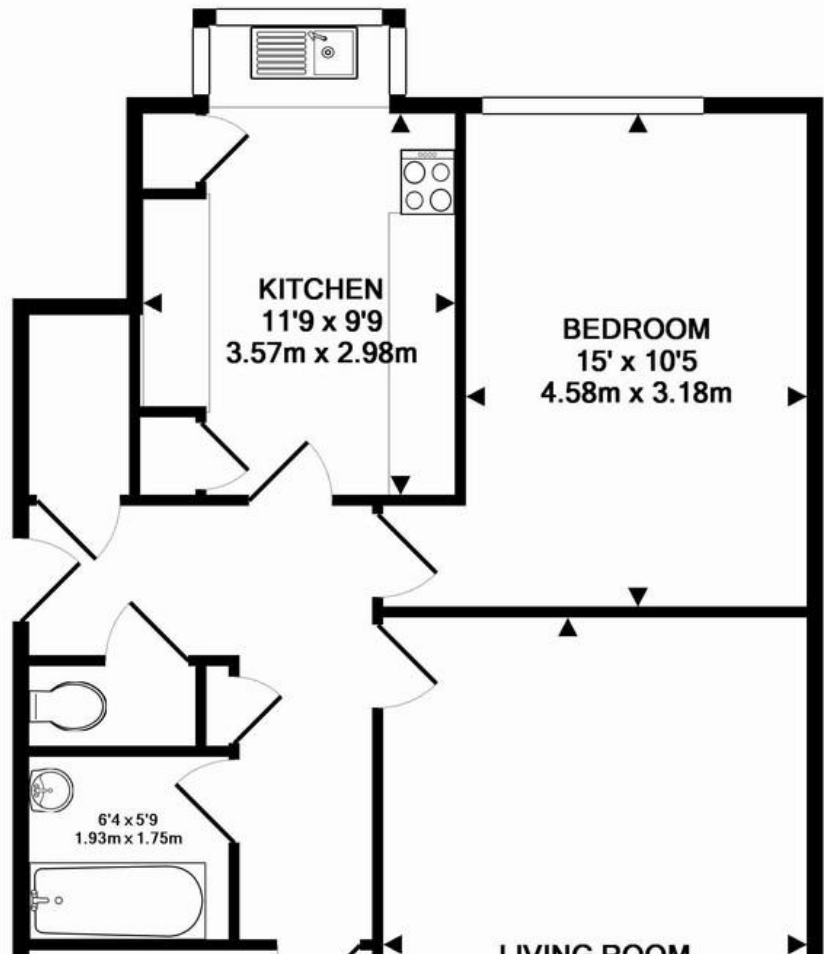


- Two bedroom
- Ground floor maisonette
- Requires some updating
- Front and rear gardens
- Garage
- Superb letting investment

We are pleased to offer for sale this well maintained two bedroom ground floor maisonette in the heart of Beckenham a short walk to the High Street and Beckenham Junction that has proved a particularly good letting investment for the current owner for some years and can be sold with a tenant or with vacant possession. The property although requiring some updating to fully enhance it to its full potential was constructed to a good standard some years ago and as was common in this time the living accommodation compared to more modern apartments today in particularly spacious boasting a 24ft lounge / diner and a superb kitchen breakfast room that one could easily dine in. The bedrooms are equally well proportioned and of particular note are the rear patio garden and the private front garden of some 30ft ideal for that all important outside space. The lease is over 100 years and maintenance equally shared and with private garage to the rear your early attention to view is well advised.

LOUNGE/DINER 23' 2" x 13' 0"
(7.06m x 3.96m)

KITCHEN 11' 9" x 9' 9" (3.58m x 2.97m)



NOTICE. Whilst every effort has been made to ensure the accuracy of these sales details, they are for guidance purposes only and prospective purchasers or lessees are advised to seek their own professional advice as well as to satisfy themselves by inspection or otherwise as to their correctness. Some images have been taken using a wide angle lens. No representation or warranty whatever is made in relation to this property by Homefront or its employees nor do such details form part of any offer or contract.