



James Street, Seahouses, Northumberland **£125,000**





YOUR MOVE





James Street, Seahouses, Northumberland

£125,000

Property Description

**** IDEAL INVESTMENT OR FIRST TIME BUY **
GOOD PROPORTIONS ** OFF STREET PARKING
** ENCLOSED REAR GARDEN ** ***TWO
BED TERRACED HOME**IDEAL INVESTMENT**
COASTAL VILLAGE LOCATION**.** We would like to welcome to the market this two bedroom terraced house in the coastal village of Seahouses. The property briefly comprises a good size kitchen/breakfast room, living room with open fire, two double bedrooms, bathroom and separate wc, enclosed rear garden and off street parking. A copy of the EPC will be available on request. EPC Grade E.

Our View

A great opportunity for a first time buyer or investor. Near to local amenities and schooling, and benefitting from an generous enclosed rear garden. If you are looking to get on the housing ladder, we highly recommend taking a look at the accommodation offer.

Location

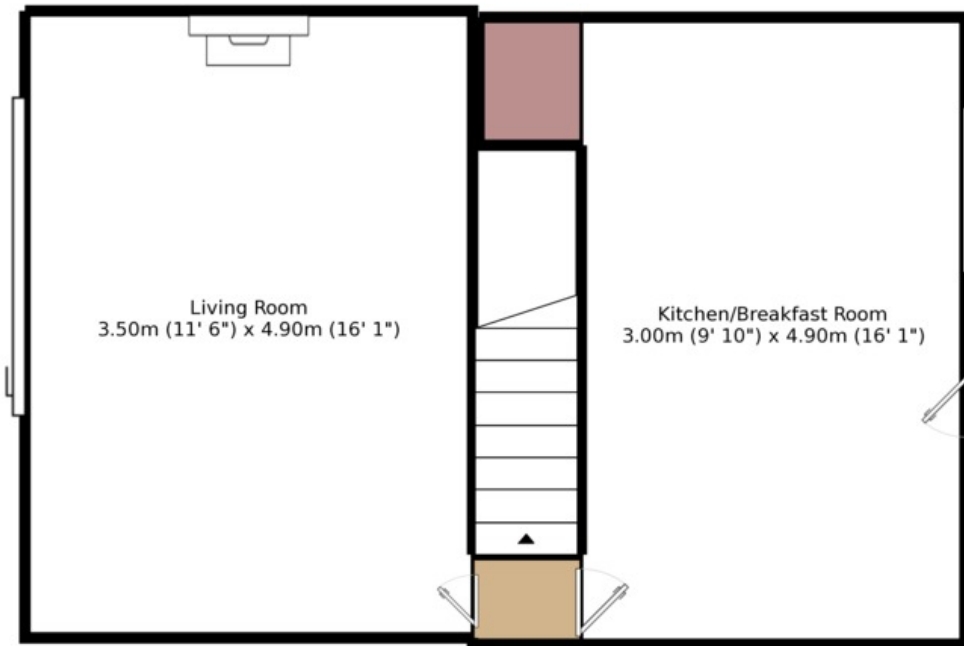
A popular fishing village, Seahouses lies on the north Northumberland coastline and is known for its sandy beaches, working harbour and Farne Islands which lie off the coast. There are a range of shopping facilities, leisure facilities, restaurants, public houses, churches, a post office, community centre, veterinary practice and doctors surgery. There are public transport links and Alnmouth railway station is approximately 11 miles away.



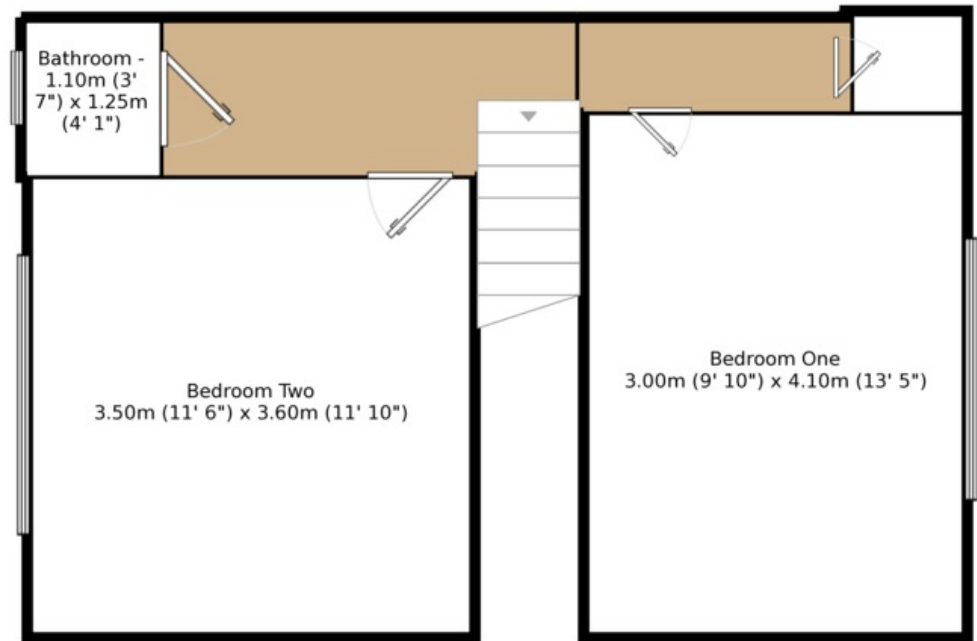
EPC Grade E

For full EPC please contact the branch

Ground Floor
Floor Size: 33.2 m², 357.8 ft²



First Floor
Floor Size: 32.8 m², 352.5 ft²



Measurements are approximate. Not to scale. For illustrative purposes only.

IMPORTANT NOTE TO PURCHASERS: We endeavour to make our sales particulars accurate and reliable, however, they do not constitute or form part of an offer or any contract and none is to be relied upon as statements of representation or fact. The services, systems and appliances listed in this specification have not been tested by us and no guarantee as to their operating ability or efficiency is given. All measurements have been taken as guide to prospective buyers only, and are not precise. Floor plans where included are not to scale and accuracy is not guaranteed. If you require clarification or further information on any points, please contact us, especially if you are travelling some distance to view. Fixtures and fittings other than those mentioned are to be agreed with the seller.

Your Move is a trading name of your-move.co.uk, registered in England at Newcastle House, Albany Court, Newcastle Business Park, Newcastle upon Tyne NE4 7YB (number 01864469).

*Calls may be recorded and/or monitored for training and/or security purposes.

Bondgate Within, Alnwick, Northumberland,
NE66 1SX

01665 603443 * Alnwick@your-move.co.uk

