



Sheldon Close, Wychbold, Droitwich, Worcestershire    **£215,000**









## Sheldon Close, Wychbold, Droitwich, Worcestershire

**£215,000**

### Property Description

An immaculately presented, modern style family home with well laid out accommodation on a popular residential development. Having entrance hall with guest cloakroom off and courtesy door to the garage, the modern style fitted kitchen has built in oven and hob and space for appliances. Off the hallway is the spacious living room with french doors into the large conservatory which, in turn, leads to the decked patio garden. To the first floor are three bedrooms with en suite to the master and family bathroom having white suite. The rear garden is a real feature of the property with a large decked patio with steps down to the gravelled garden with fenced boundaries and planted hedging. With driveway parking and access to the garage beyond. EPC Grade D. A copy of the EPC will be available on request.

### Our View

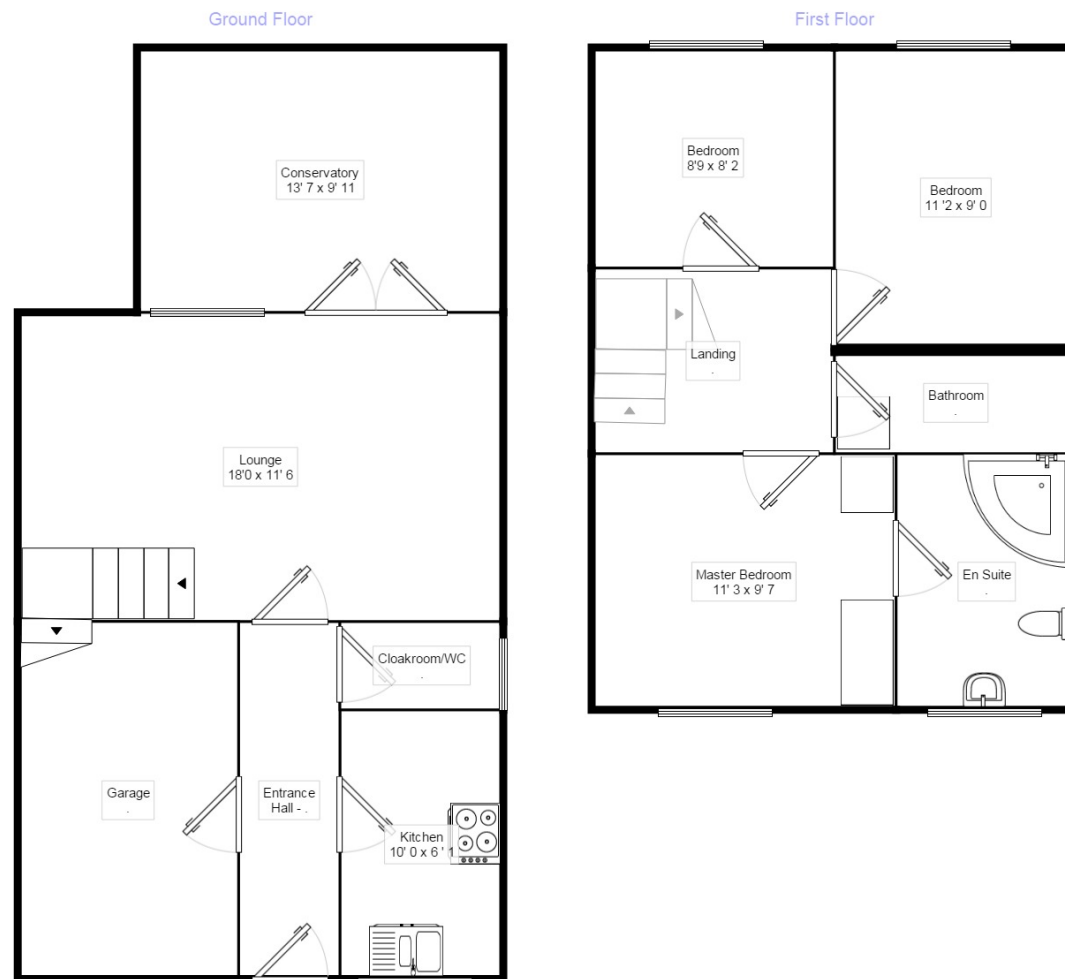
A beautifully presented home offering space, style and comfort which is ideal for a variety of buyers in our opinion. Situated in a popular residential development which gives ease of travel for commuters, this superb property is sure to prove very popular. Call our property team to book your home visit.

### Location

The property is situated in the popular village of Wychbold, just north of the town of Droitwich. Droitwich and Bromsgrove provide excellent commuting links to the motorway networks and both provide a range of shops, banks, health care practices and leisure facilities.



**EPC Rating Grade D**  
**For full EPC please contact the branch**



Measurements are approximate. Not to scale. For illustrative purposes only.

IMPORTANT NOTE TO PURCHASERS: We endeavour to make our sales particulars accurate and reliable, however, they do not constitute or form part of an offer or any contract and none is to be relied upon as statements of representation or fact. The services, systems and appliances listed in this specification have not been tested by us and no guarantee as to their operating ability or efficiency is given. All measurements have been taken as guide to prospective buyers only, and are not precise. Floor plans where included are not to scale and accuracy is not guaranteed. If you require clarification or further information on any points, please contact us, especially if you are travelling some distance to view. Fixtures and fittings other than those mentioned are to be agreed with the seller.

Your Move is a trading name of your-move.co.uk, registered in England at Newcastle House, Albany Court, Newcastle Business Park, Newcastle upon Tyne NE4 7YB (number 01864469).

\*Calls may be recorded and/or monitored for training and/or security purposes.

Orchard House, Victoria Square, Droitwich,  
Worcestershire, WR9 8QT  
01905 772084 \* [Droitwich@your-move.co.uk](mailto:Droitwich@your-move.co.uk)

