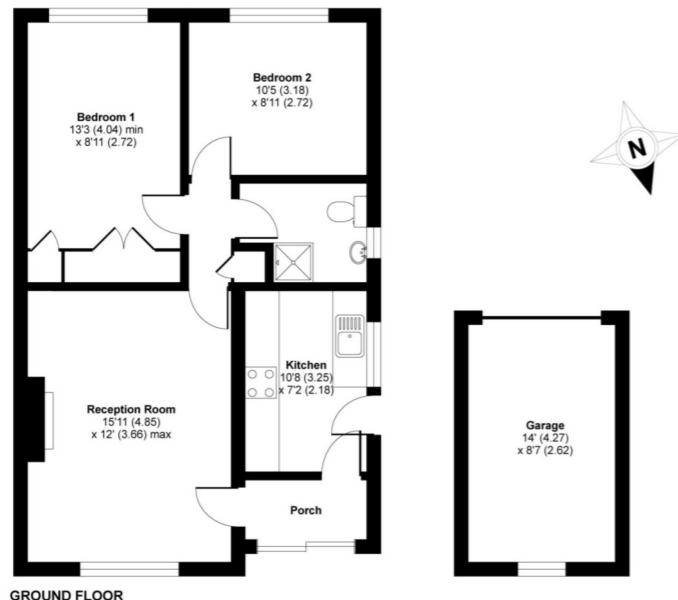


Fortina Close, Wymans Brook, Cheltenham, GL50

APPROX. GROSS INTERNAL FLOOR AREA 750 SQ FT 69.7 SQ METRES (INCLUDES DETACHED GARAGE)



Whilst every attempt has been made to ensure the accuracy of the floor plan contained here, measurements of doors, windows and rooms are approximate and no responsibility is taken for any error, omission or misstatement. These plans are for representation purposes only as defined by RICS Code of Measuring Practice and should be used as such by any prospective purchaser. Specifically no guarantee is given on the total square footage of the property if quoted on this plan. Any figure given is for initial guidance only and should not be relied on as a basis of valuation.

1 Kew Place, Cheltenham, Gloucestershire, GL53
7NG
T: 01242 246980

perrybishop.co.uk

Disclaimer: These particulars should not be relied upon as fact and are not an offer or contract. The seller does not make, nor do we give any warranty. All information should be verified, no survey has been done or testing completed.

27 Fortina Close Wymans Brook, GL50 4RB



Spacious semi-detached bungalow | Two bedrooms | Open views to the front
Close to excellent local amenities | Garage and off road parking | EPC D

£190,000

Perry Bishop
and Chambers

the agent who keeps you informed



27 Fortina Close

Wymans Brook, GL50 4RB



2 Bedrooms



1 Bathrooms



1 Reception

A modern two bedroom semi-detached bungalow located on the outskirts of Cheltenham, situated opposite open countryside enjoying a delightful aspect close to a good range of local amenities.

The accommodation in brief comprises an entrance hall, a spacious sitting/dining room with double glazed window to the front with views over surrounding countryside, an inner hallway provides loft access, cloaks cupboard, two double bedrooms, the master bedroom with fitted wardrobes and there is also a separate shower room.

Additional benefits of this modern bungalow include gas fired central heating, double glazing, a garage, off road parking and an enclosed low maintenance rear garden.

Directions

From Cheltenham town centre proceed north to the racecourse. At the traffic island turn into Swindon Lane and then 4th left into Windyridge Road. Take the first right into Mandarin way and then right into Fortina Close, where the property can be found at the far end. Please note this does lead you to the rear of the property.

Services & Tenure

We believe the property is served by mains electricity, water, drainage. The vendor informs us that the tenure is freehold. Confirmation has been requested – please contact us for further details. The above should be verified by your solicitor or Surveyor.

Local Authority

Cheltenham Borough Council

