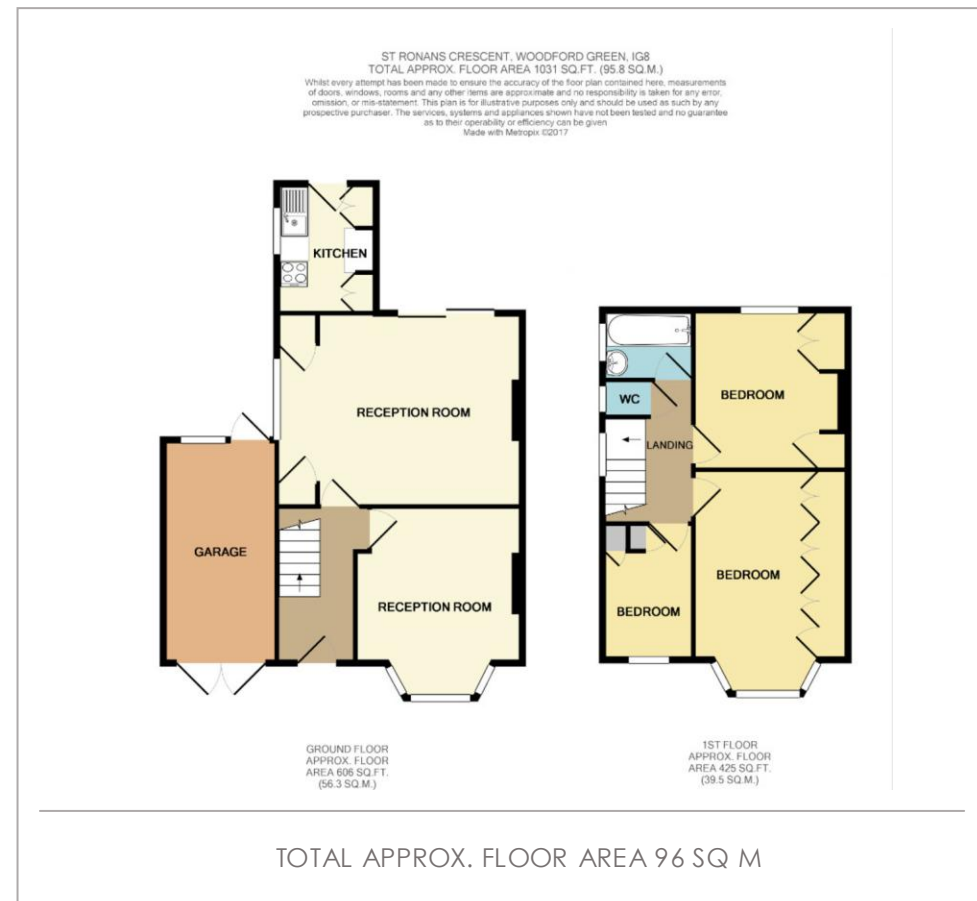




St. Ronans Crescent, Woodford Green





Situated on the popular Laing Estate is this three-bedroom semi-detached family home with own drive to garage. The property comprises two reception rooms, kitchen, three bedrooms, family bathroom, gas central heating and a 70ft rear garden which has a south westerly aspect and a garage via its own driveway. Woodford offers excellent amenities and Churchfields School is also close by. Transport facilities include the London Underground Central Line System at Woodford with road links providing access to the M11, M25 and A406. This would make an ideal family home so viewing is of course highly recommended.