



Swalcliffe
Oxfordshire

Swalcliffe, Oxfordshire

A Charming Grade II Listed Thatched Two Double Bedroom Cottage with a Lovely Rear Garden Set in this Popular and sought after Village. The Property has Recently Undergone Improvement, which includes Re-Thatching and Chimney Lining.

The accommodation briefly comprises: Entrance Hall, Sitting Room, Kitchen, Two Double Bedrooms and Bathroom.

Outside affords a Long Rear Garden, fully enclosed with Mature Trees, Shrubs Bushes and Borders; Large Wooden Shed. At the far end of the garden there is a secluded area overlooking fields.

Swalcliffe is a village in the county of Oxfordshire. It has one public house, The Stag's Head, a 14th century church, a 15th century Tithe Barn, a village hall and an Equestrian Centre. It has an active social calendar of village events. Swalcliffe is served by a bus connection to Banbury and Stratford-upon-Avon several times a day and has easy access to the Cotswolds. The property is situated within easy distance of Soho Farmhouse.

A further comprehensive range of facilities can be found in Oxford, Banbury, Leamington Spa, Bicester, Chipping Norton and Stratford-upon-Avon, whilst access to the M40 motorway can be gained at junctions 10 or 11.

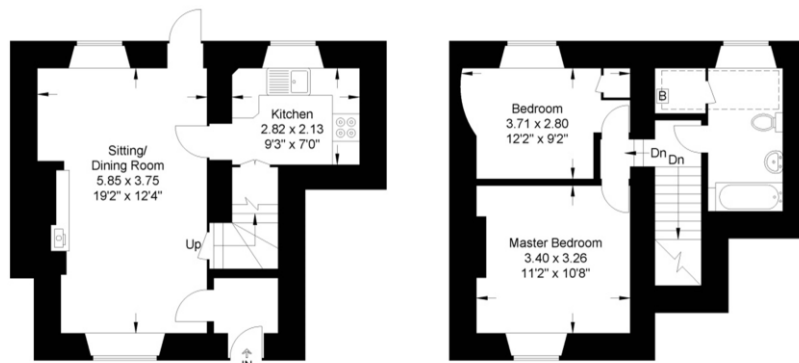




- 18th Century Origin, built of Coursed Ironstone
- Entrance Hall
- Sitting Room
- Inglenook Fireplace and Multi Fuel Burner
- Kitchen
- Two Double Bedrooms
- Bathroom
- Enclosed Rear Garden
- Secluded Raised Seating Area at the end of the garden overlooking open fields
- LPG Gas Fired Central Heating
- Period Features including Exposed Stonework, Beams and Pine Doors



Guide Price: £299,950



Ground Floor

First Floor



Approximate Gross Internal Area
67.52 sq m / 726.77 sq ft

Illustration for identification purposes only,
measurements are approximate, not to scale.

Local Authority
Cherwell District Council
Council Tax Band: D

Tenure
Freehold

Additional Information

Banbury c. 6 miles
Chipping Norton c. 9 miles
Oxford c. 26 Miles
Birmingham c. 58 miles
London c. 83 miles
M40/11 c. 7 miles
Soho Farmhouse, Great Tew c. 7 miles
London (Marylebone) via Banbury
c. 1 hour

Mark David
ESTATE AGENTS

Market House, Market Square, Deddington, Oxfordshire, OX15 0SB
Tel: 01869 338898
Email: deddington@mark-david.co.uk
www.mark-david.co.uk

Branches also at: Banbury, Chipping Norton & London

Important Notice

Mark David Estate Agents for themselves and their clients give notice that:-

1. They are not authorised to make or give representation or warranty in relation to this property, either on their own behalf or on behalf of the Seller. They assume no responsibility for any statement made in these particulars. These particulars do not form part of any offer or contract and must not be relied upon as statements or representations of fact.
2. Whilst every attempt has been made to ensure the accuracy of the floorplan contained here, measurements of doors, windows, rooms and any other items are approximate and no responsibility is taken for any error, omission, or mis-statement.
3. All areas, measurements or distances are approximate. The particulars are intended for guidance only and are not necessarily comprehensive. A wide angle lens may have been used in photography. Mark David Estate Agents have not tested appliances or services and it should not be assumed that the property has all necessary planning, building regulation and other consents. Buyers must satisfy themselves with the property by inspection or otherwise.
4. Reference to any mechanical or electrical equipment does not constitute a representation that such equipment is capable of fulfilling its function and prospective Buyers must make their own enquiries.
5. They have no responsibility for any expenses or costs incurred by prospective Buyers in inspecting properties which have been sold, let or withdrawn. Applicants are advised to contact the Agent to check availability and any other information of particular importance to them, prior to inspecting the property, particularly if traveling some distance.