



Bloxham
Oxfordshire

Bloxham, Oxfordshire

A Substantial Four Bedroom Detached Property Offering Spacious Accommodation and Benefiting from An Annex Conversion.

The property briefly comprises:

Entrance Hall, Cloakroom, Kitchen/Dining Room, Living Room Four First Floor Bedrooms and a Family Bathroom. The Annexe benefits from Two Ground Floor Reception Rooms and First Floor Landing Bedroom, Kitchenette and Shower Room.

Outside the property has a Front Garden with Driveway leading to the Garage and a Fully Enclosed Rear Garden Laid to Lawn.

The picturesque village of Bloxham offers many amenities including a convenience store, Post Office, hairdressers, three Public Houses offering good food, doctors and dentist. The village has a good community spirit and offers many clubs ranging from babies and toddlers groups, to Brownies, Scouts, table tennis, football, mountaineering, bowls, WI, history and gardening clubs, to name a few.

Also within the village there is the Bloxham Church of England Primary School and secondary education at the Warriner School. Bloxham School is an independent co-educational school catering for boarders and day pupils. Tudor Hall Girls School is approximately 2 miles outside of the village. Access to the M40 motorway can be gained at Junctions 10 or 11. Mainline stations are also available from Banbury and Bicester.

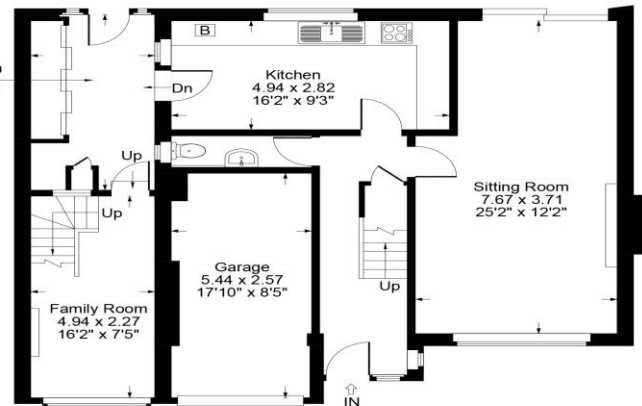




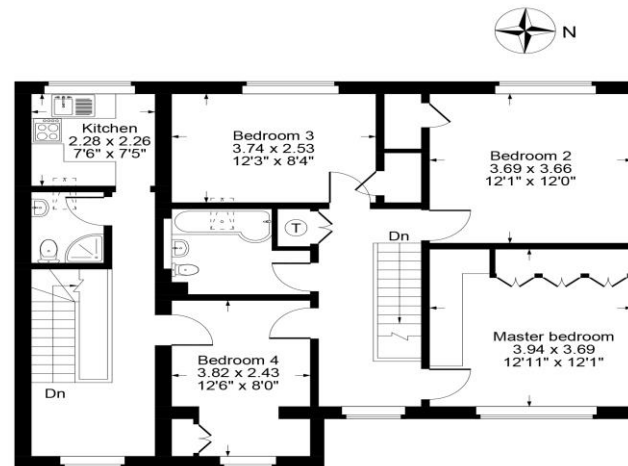
- Entrance Hall
- Cloakroom
- Kitchen/Dining Room
- Living Room
- Four First Floor Bedrooms
- Family Bathroom
- Annexe comprising Two Ground Floor Reception Rooms and First Floor Landing Bedroom, Kitchenette and Shower Room.
- Fully Enclosed Rear Garden
- Driveway leading to Garage



Guide Price: £420,000



Ground Floor



First Floor

Approximate Gross Internal Area = 183.32 sq m / 1973.36 sq ft

Illustration for identification purposes only,
measurements are approximate, not to scale.

Local Authority
Cherwell District Council

Tenure
Freehold

Additional Information

Banbury c. 3 miles
Deddington c. 4 miles
Chipping Norton c. 9 miles
Oxford c. 23 miles
Birmingham c. 55 miles
London c. 81 miles

M40 access c. 6 miles

Banbury to London Marylebone c. 1
hour.

Mark David
ESTATE AGENTS

Market House, Market Square, Deddington, Oxfordshire
OX15 0SB
Tel: 01869 338898
Email: deddington@mark-david.co.uk
www.mark-david.co.uk

Important Notice

Mark David Estate Agents for themselves and their clients give notice that:-

1. They are not authorised to make or give representation or warranty in relation to this property, either on their own behalf or on behalf of the Seller. They assume no responsibility for any statement made in these particulars. These particulars do not form part of any offer or contract and must not be relied upon as statements or representations of fact.
2. Whilst every attempt has been made to ensure the accuracy of the floorplan contained here, measurements of doors, windows, rooms and any other items are approximate and no responsibility is taken for any error, omission, or mis-statement.
3. All areas, measurements or distances are approximate. The particulars are intended for guidance only and are not necessarily comprehensive. A wide angle lens may have been used in photography. Mark David Estate Agents have not tested appliances or services and it should not be assumed that the property has all necessary planning, building regulation and other consents. Buyers must satisfy themselves with the property by inspection or otherwise.
4. Reference to any mechanical or electrical equipment does not constitute a representation that such equipment is capable of fulfilling its function and prospective Buyers must make their own enquiries.
5. They have no responsibility for any expenses or costs incurred by prospective Buyers in inspecting properties which have been sold, let or withdrawn. Applicants are advised to contact the Agent to check availability and any other information of particular importance to them, prior to inspecting the property, particularly if traveling some distance.