



  
**Andrew Pearce**  
PINNER

VILLAGE WAY, PINNER, HA5 5AB

£735,000



A Modern, spacious and beautifully presented family home featuring a ground floor cloakroom, two/three reception rooms and an open plan kitchen/breakfast room. To the first floor there are three bedrooms and a family bathroom and stairs leading to the second floor which hosts fourth bedroom, shower room and eaves storage.

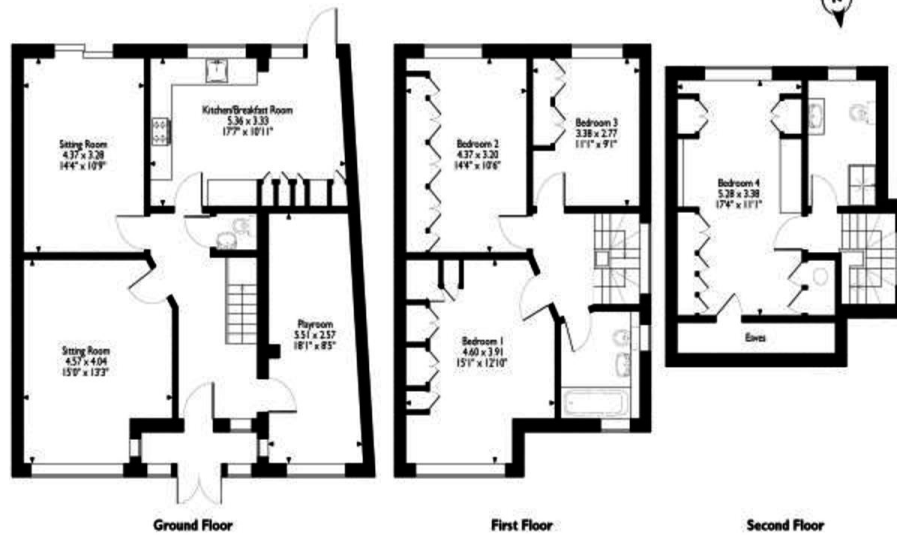
Peacefully situated minutes from Eastcote, Pinner and Rayners Lane all offering an array of shops, restaurants, coffee houses and popular supermarkets. The Metropolitan Line can be accessed at Eastcote, Pinner and Rayners Lane stations with Rayners Lane further facilitating the Piccadilly Line, all lines provide a fast and frequent service running into the heart of Central London and beyond. The area is well served with a range of schooling, children's parks/playgrounds and recreational facilities.

Complete upward chain





Village Way, Pinner  
Approximate Gross Internal Area  
160 Sq M/1725 Sq Ft



Please note that the location of doors, windows and other items are approximate and this floorplan is to be used for illustrative purposes only. Unauthorized reproduction is prohibited.



