



ORCHARD BUILDINGS

BRIDGWATER

A development of 11 Contemporary homes in Bridgwater's first Victorian cinema building. Town centre apartments providing clean lined open plan living.

- 3 - 1 bed apartments.
- 4 - 2 bed apartments.
- 3 - 2 bed duplex apartments.
- 1 - 3 bed house.

Website: <http://www.orchardbuildings.co.uk>

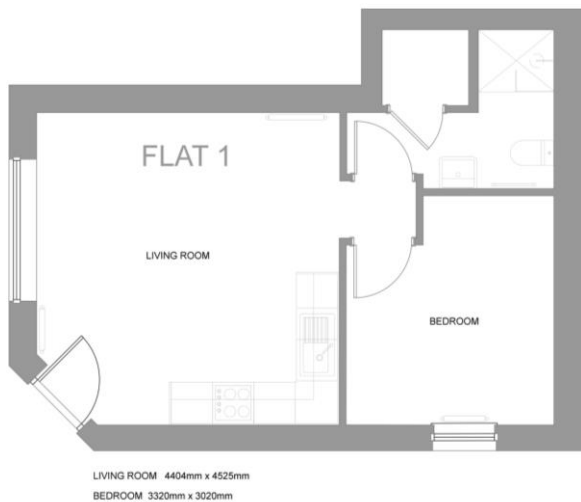


- 10 Year LABC Warranty to 30th June 2027.
- Property completely refurbished.
- Close to town centre bus for Hinkley Point.
- Modern Fully fitted Kitchens with integrated appliances.
- Ensuite Bathrooms
- Fully Let.
- Total 6545 Ft 2

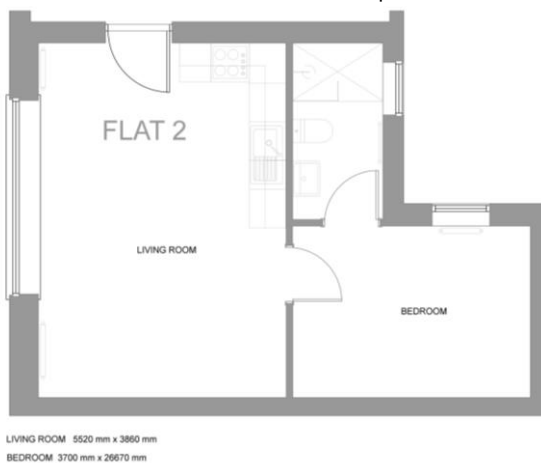


FLOOR PLANS

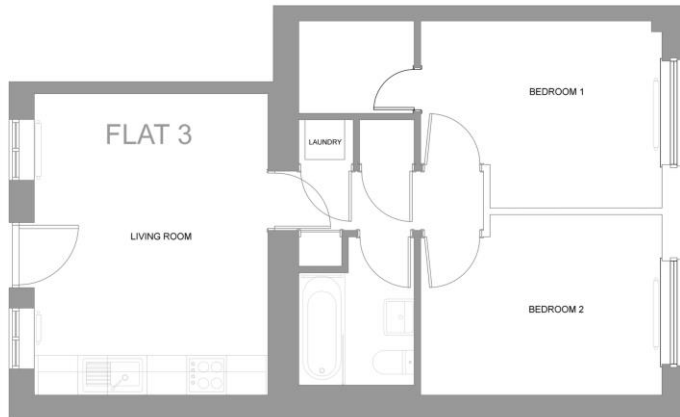
Flat 1 - 1 bedroom Ground Floor Apartment, 390 Ft²



Flat 2 - 1 bedroom Ground Floor Apartment, 380 Ft²



Flat 3 -2 bedroom Ground Floor Apartment, 500 Ft2



LIVING ROOM 4560 mm x 3540 mm
BEDROOM 1 3655 mm x 2830 mm
BEDROOM 2 3655 mm x 2730 mm

Flat 4 -2 bedroom Ground Floor Apartment, 525 Ft2



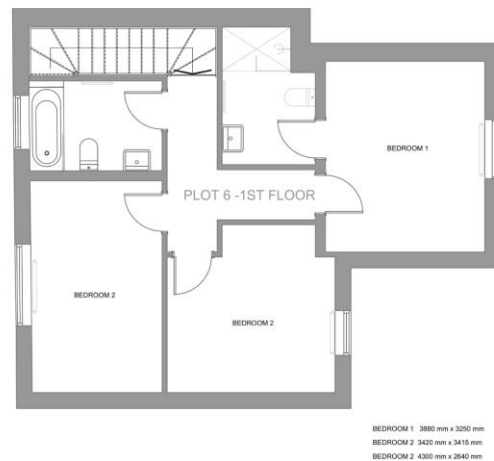
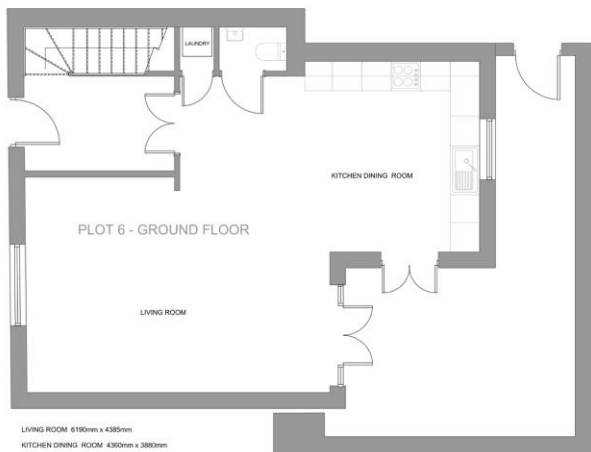
LIVING ROOM 4827 mm x 3540 mm
BEDROOM 1 3500 mm x 3080 mm
BEDROOM 2 3500 mm x 3080 mm

Flat 5 -2 bedroom Ground Floor Apartment, 550 Ft2

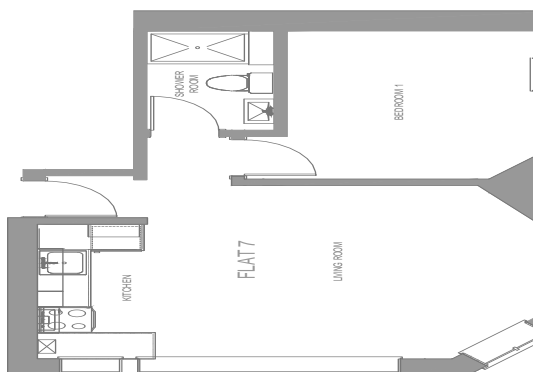


LIVING ROOM 5520 mm x 3540 mm
BEDROOM 1 3400 mm x 3335 mm
BEDROOM 2 3400 mm x 3250 mm

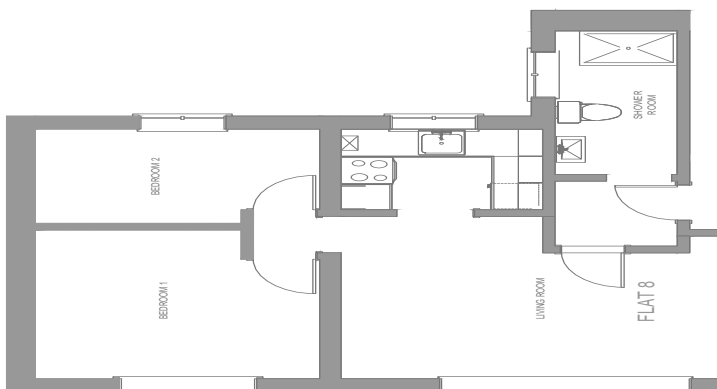
House 6 -3 bedroom Two Semi-detached House , 1100 Ft2



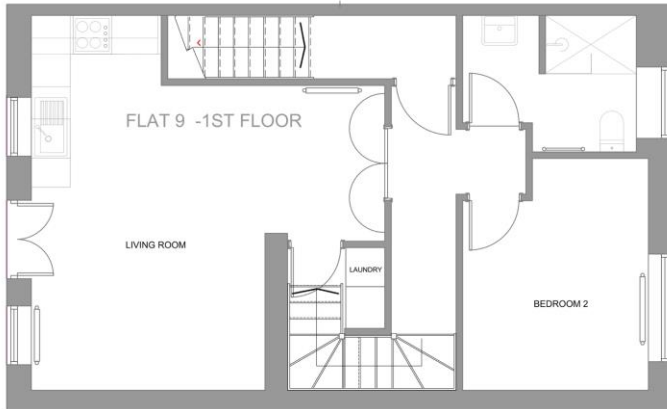
Flat 7 -1 bedroom First Floor Apartment, 400 Ft2



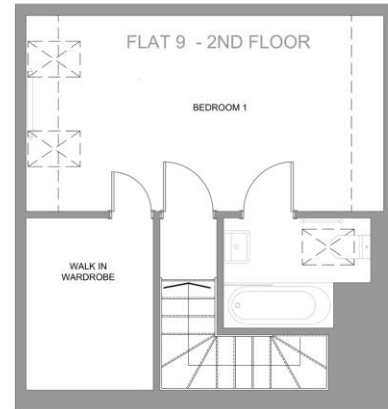
Flat 8 -2 bedroom First Floor Apartment, 450 Ft2.



Flat 9 -2 bedroom First & Second Floor Apartment, 700 Ft2.

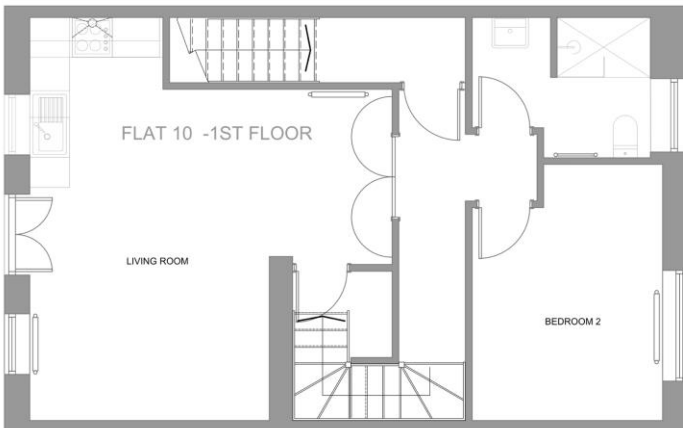


LIVING ROOM 5870 mm x 3600 mm
BEDROOM 3575 mm x 2860 mm

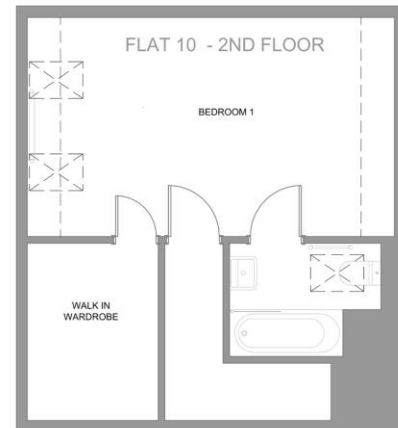


BEDROOM 4525 mm x 3015 mm
--- Denotes line of low headroom

Flat 10 -2 bedroom First & Second Floor Apartment, 740 Ft2

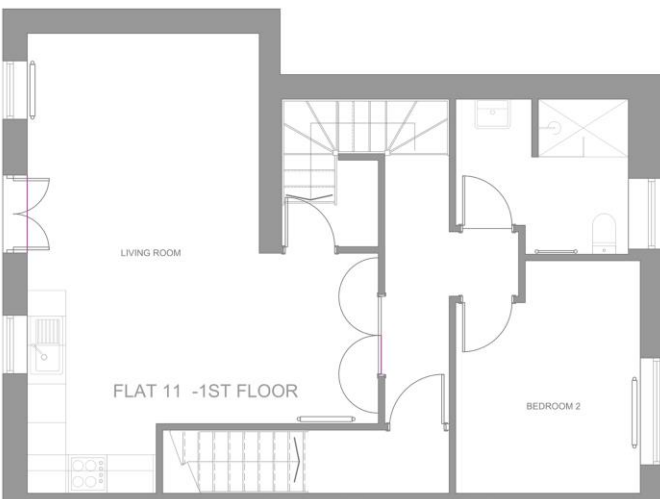


LIVING ROOM 6040 mm x 3600 mm
BEDROOM 3840 mm x 2760 mm

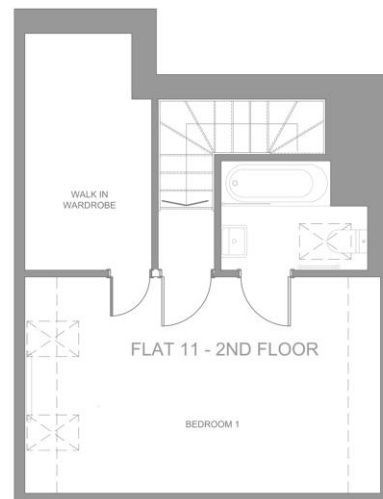


BEDROOM 4525 mm x 3280 mm
--- Denotes line of low headroom

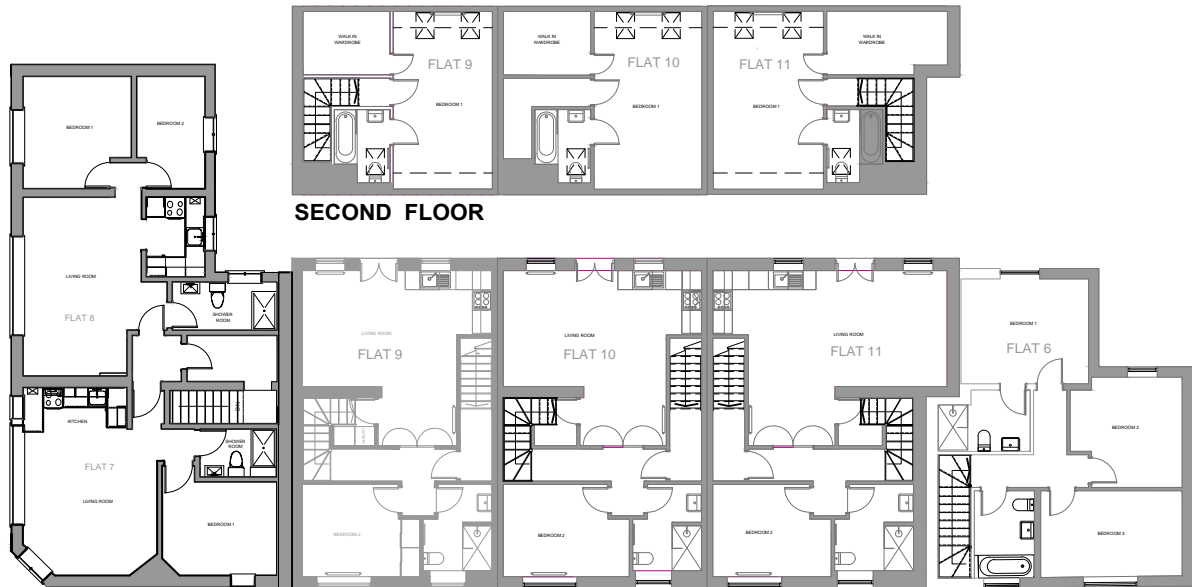
Flat 11 -2 bedroom First & Second Floor Apartment, 810 Ft2.



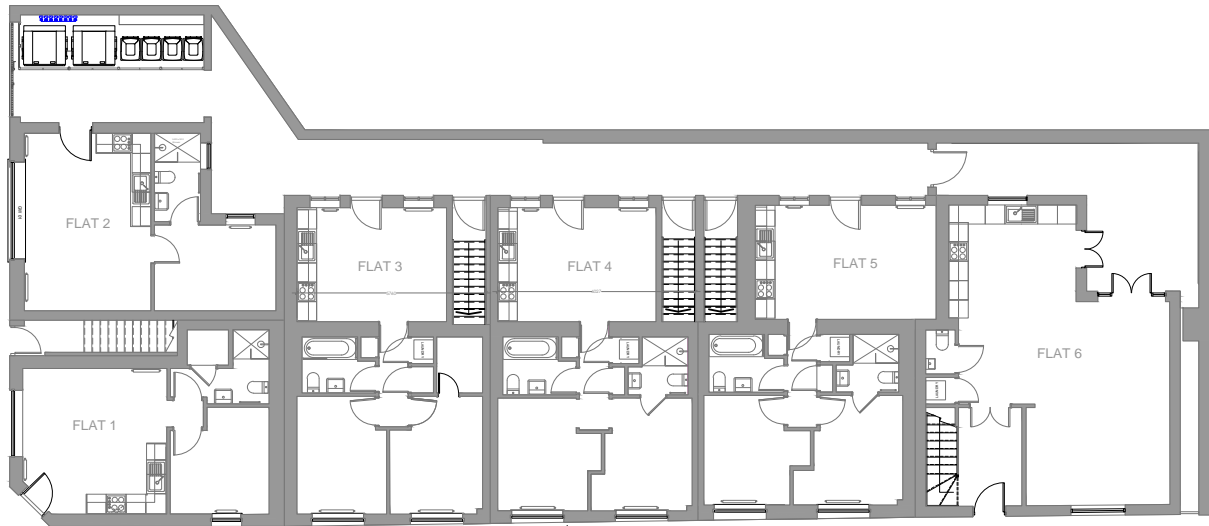
LIVING ROOM 7140 mm x 3600 mm
BEDROOM 3611 mm x 2680 mm



BEDROOM 4525 mm x 3360 mm
--- Denotes line of low headroom



FIRST FLOOR



GREEN DRAGON LANE

GROUND FLOOR



ORCHARD BUILDINGS

BRIDGWATER



rightmove



Zoopla.co.uk

EXETER OFFICE
1 Barnfield Crescent Exeter EX1 1QT
Tel: 01392 345070
enquiries@eastofexe.co.uk
www.eastofexe.co.uk

EAST DEVON OFFICE
61 Fore Street Topsham EX3 0HL
Tel: 01392 877240
enquiries@eastofexe.co.uk
www.eastofexe.co.uk

WEST OF EXE OFFICE
Main Road Exminster EX6 8DB
Tel: 01392 833999
enquiries@westofexe.co.uk
www.westofexe.co.uk

Registered in England no.07121967