



Santridge Lane

BROMSGROVE

£110,000



One Bedroom Apartment

Features.

- SPACIOUS DOUBLE BEDROOM
- LOUNGE
- KITCHEN
- BATHROOM
- WITHIN EASY DISTANCE OF BROMSGROVE TOWN CENTRE

Description.

A well presented one bedroom apartment, offered with a respectful sized living room, bedroom, kitchen and bathroom, situated within close proximity of Bromsgrove town centre.

The accommodation features a spacious entrance and hallway leading to; good-sized living room; separate kitchen; a considerably large bedroom with built-in wardrobe; and a small bathroom with a bath.

Outside, the property has off road parking and a maintained front garden with a paved footpath.

The property is not far located from the town centre, offering a range of shops, eateries, bars, leisure centres and a library with links to the M5 (junction 5), and M42 (junction 1), Bromsgrove is an ideal location for commuting to Birmingham and Worcester.



Room Dimensions.

Room Dimensions:

Entrance Hall

Stairs To First Floor Landing

Lounge: 14' 4" x 11' 5" (4.38m x 3.48m)

Bedroom: 11' 5" x 11' 2" (3.50m x 3.42m)

Kitchen: 9' 0" x 8' 8" (2.75m x 2.65m)

Bathroom: 6' 4" x 5' 6" (1.95m x 1.68m)



Santridge Lane, Bromsgrove

EPC: C

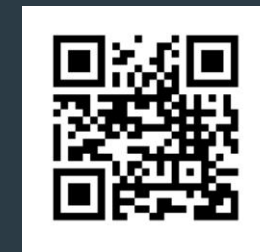
COUNCIL TAX BAND: A

TENURE: Leasehold

.....
For more information on this house or to
arrange a viewing please call the
Bromsgrove office on:

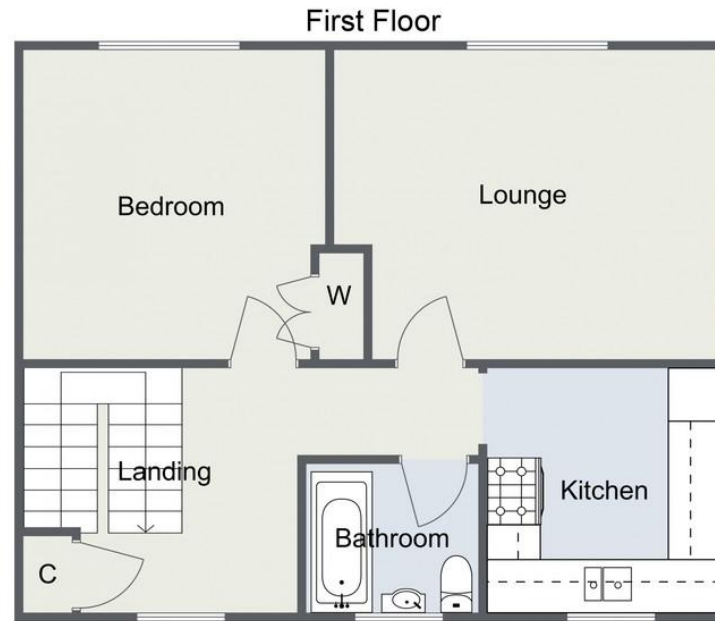
01527 872 479
.....

Alternatively, you can scan below to view all
of the details of this property online.

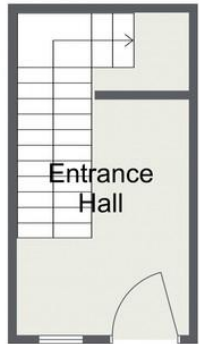


.....

14 Old Birmingham Road
Lickey End
Bromsgrove
B60 1DE



Ground Floor



Total Area Approx:
57.4 sq metres (618 sq ft)

For illustrative purposes only. Decorative finishes, fixtures & fittings do not represent the current state of the property. Measurements are approximate & not to scale. Floor Plans made using RoomSketcher.

Please read the following: These particulars are for general guidance only and are based on information supplied and approved by the seller. Complete accuracy cannot be guaranteed and may be subject to errors and/or omissions. They do not constitute a contract or part of a contract in any way. We are not surveyors or conveyancing experts therefore we cannot and do not comment on the condition, issues relating to title or other legal issues that may affect this property. Interested parties should employ their own professionals to make enquiries before carrying out any transactional decisions. Photographs are provided for illustrative purposes only and the items shown in these are not necessarily included in the sale, unless specifically stated. The mention of any fixtures, fittings and/or appliances does not imply that they are in full efficient working order and they have not been tested. All dimensions are approximate. We are not liable for any loss arising from the use of these details.