



Q Investments
International

3 Bedroom Apartment / Flat
Marylebone, W2 1BW

£9,000

<https://qinvestments.london>



Garrett Mansions, Marylebone, W2 1BW

Brand New! Apartment with Balcony to Rent on Edgware Road in West End Gate in London. You will be the first person to rent this beautiful luxurious flat with amenities in the new development in Paddington. Call Today to book your visit.

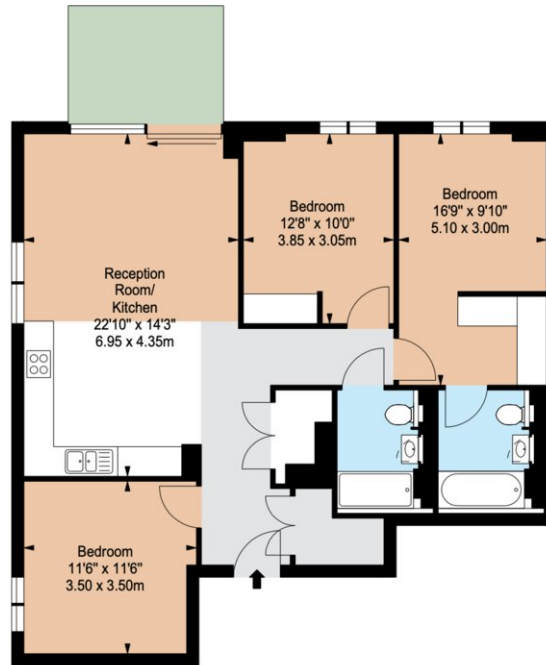
AMENITIES:

Furthermore residents have access to a large number of luxury amenities, including; a 24 hour concierge service, spa complete with swimming pool, sauna, steam room and treatment rooms, state of the art gymnasium and cinema room and meeting room.

The state-of-the-art wellness suite provides the perfect place to unwind after long day.

CLASSIC LONDON LIVING REINVENTED IN FASHIONABLE CITY CENTRE

Apartment is located in one of London's most prestigious postcodes between Paddington and Marylebone. This is a unique location, placed between Hyde Park and Regents Park. The development provides fantastic transport links being located only a minute from Edgware Road Station and a short walk away from Paddington Station.



THIRD FLOOR

