



Q Investments  
International



2 Bedroom Apartment / Flat  
Hammersmith, W6 9UF

£6,290

<https://qinvestments.london>





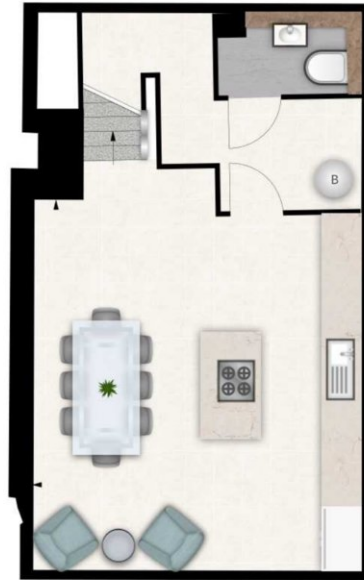
## London, Hammersmith, W6 9UF

Riverside Luxury New Build Maisonette / Duplex Apartment with terrace to Rent in London.

Internal Area: 1259 square feet

A spectacularly spacious two-bedroom, two-bathroom Duplex apartment arranged over the Ground and Lower ground floors with its fabulous entertaining area is all set within this newly converted, warehouse style, gated development on the River Thames.

On offer is 1259 square feet of luxury living including two bedrooms both with en suite bathrooms, a double reception room opening onto a small private space along with a glass floor area revealing the show stopping lower level which comprises the kitchen/diner and all-round entertaining space complete with WC. The fully fitted Metris Kitchen is complete with Miele appliances including an integrated dishwasher, washer/dryer, full height fridge freezer, oven, hob and integrated extractor fan as. The bathrooms comprise of full bathroom suites with underfloor heating whilst the bedrooms boast bespoke mirrored wardrobes and automatic lights which are sure to impress. Further benefits of the apartment include a audio visual system, a digital video door entry system and pre-wiring for Sky + TV.



LOWER GROUND FLOOR



GROUND FLOOR

Energy Efficiency Rating		Current	Potential
<i>Very energy efficient - lower running costs</i>			
(92-100) <b>A</b>			
(81-91) <b>B</b>			
(69-80) <b>C</b>			
(55-68) <b>D</b>			
(39-54) <b>E</b>		43	43
(21-38) <b>F</b>			
(1-20) <b>G</b>			
<i>Not energy efficient - higher running costs</i>			
<b>England, Scotland &amp; Wales</b>		EU Directive 2002/91/EC	

Environmental Impact (CO <sub>2</sub> ) Rating		Current	Potential
<i>Very environmentally friendly - lower CO<sub>2</sub> emissions</i>			
(92-100) <b>A</b>			
(81-91) <b>B</b>			
(69-80) <b>C</b>			
(55-68) <b>D</b>			
(39-54) <b>E</b>		50	50
(21-38) <b>F</b>			
(1-20) <b>G</b>			
<i>Not environmentally friendly - higher CO<sub>2</sub> emissions</i>			
<b>England, Scotland &amp; Wales</b>		EU Directive 2002/91/EC	