



Cadogan Road  
Surbiton, Surrey, KT6 4DH

Guide Price £1,100,000

# Property Summary

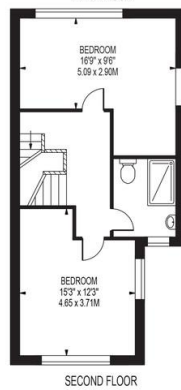
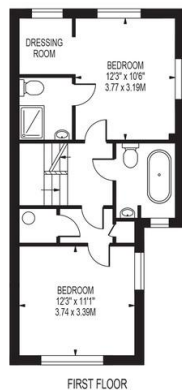
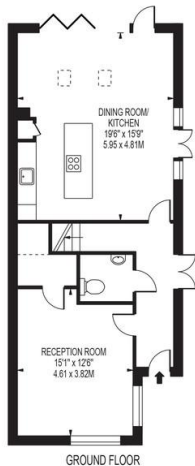
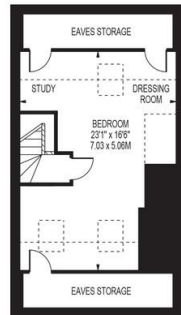
Located on a highly desirable River Road and on the corner of Maple Road is this brand new five bedroom town house complete with a sleek high quality finish, stylish interiors, ample living space and private landscaped rear garden. The spec of this home really needs to be seen to be appreciated!



## CAVERLEIGH

APPROXIMATE TOTAL INTERNAL FLOOR AREA: 2170 SQ FT - 201.59 SQ M  
(INCLUDING EAVES STORAGE & RESTRICTED HEIGHT AREA)

APPROXIMATE GROSS INTERNAL FLOOR AREA OF EAVES STORAGE & RESTRICTED HEIGHT: 225 SQ FT - 20.93 SQ M



FOR ILLUSTRATION PURPOSES ONLY

THIS FLOOR PLAN SHOULD BE USED AS A GENERAL OUTLINE FOR GUIDANCE ONLY AND DOES NOT CONSTITUTE IN WHOLE OR IN PART AN OFFER OR CONTRACT. ANY INTENDING PURCHASER OR LESSEE SHOULD SATISFY THEMSELVES BY INSPECTION, SEARCHES, ENQUIRIES AND FULL SURVEY AS TO THE CORRECTNESS OF EACH STATEMENT. ANY AREAS, MEASUREMENTS OR DISTANCES QUOTED ARE APPROXIMATE AND SHOULD NOT BE USED TO VALUE A PROPERTY OR BE THE BASIS OF ANY SALE OR LET.

- Moments from highly regarded schools
- New Build with 10 year structural warranty
- Smart wireless remote heating system
- Zoned underfloor heating
- Prime location for shops, transport and green areas
- Off road parking
- Integrated kitchen appliances
- High quality interior and fittings throughout
- Chain free
- Specification list available

17 Claremont Road  
Surbiton  
Surrey  
KT6 4QR

[www.humphreyandbrand.co.uk](http://www.humphreyandbrand.co.uk)  
02083991888  
[sales@humphreyandbrand.co.uk](mailto:sales@humphreyandbrand.co.uk)

Agents Note: Whilst every care has been taken to prepare these particulars, they are for guidance purposes only. All measurements are approximate are for general guidance purposes only and whilst every care has been taken to ensure their accuracy, they should not be relied upon and potential buyers/tenants are advised to recheck the measurements