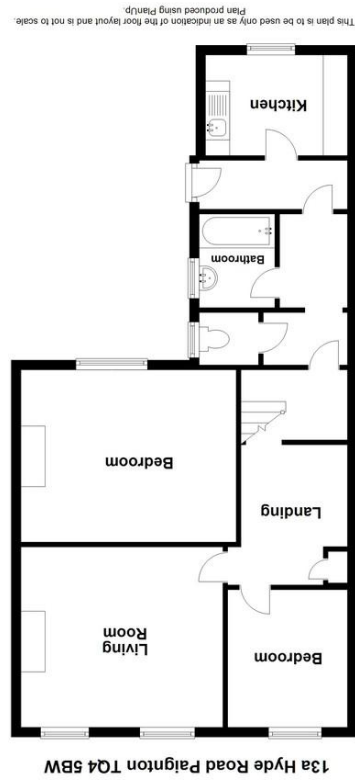
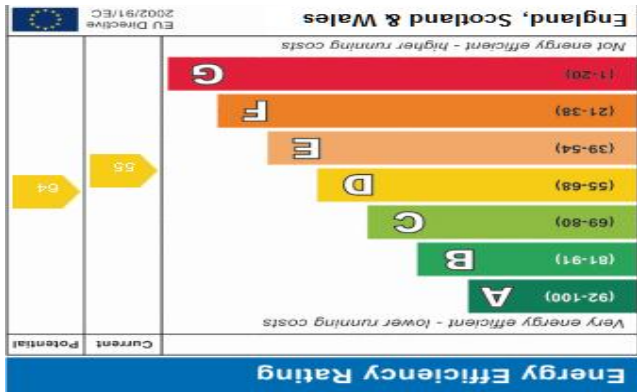




OFFICE
 49 Hyde Road, Paignton,
 Devon, TQ4 5BP
 01803 521111 | info@propertyladderdevon.com
 propertyladderdevon.com

Agents Note: Whilst every care has been taken to prepare these particulars, they are for guidance purposes only. All measurements are approximate and are for general guidance purposes only and whilst every care has been taken to ensure their accuracy, they should not be relied upon and potential buyers/tenants are advised to recheck the measurements



How much is your house worth?
It may be more than you think!
Book your free no obligation valuation today with Property Ladder.
Your Local Real Estate Agents.

CMP
 The Property Ombudsman
 Zoopla Rightmove



**13A REAR OF HYDE ROAD,
 PAIGNTON, TQ4 5BW**

£800 PCM

YOU COULDN'T GET CLOSER TO THE TOWN CENTRE! A 2 bedroomed top floor flat available soon. Comprises 2 Bedrooms, Lounge, Kitchen, Bathroom, Cloakroom and Hallway. Night storage heating. Tons of Shops and Amenities are close to hand. Bus Service from right outside in Hyde Road. Parking Space for 1 Car. Call us to view.



13A REAR OF HYDE ROAD

TOWN CENTRE | FIRST FLOOR FLAT |
LOUNGE | 2 BEDROOMS | KITCHEN |
BATHROOM | CLOAKROOM |
N/S/HEATING | RECENTLY DECORATED
| PARKING SPACE



ACCOMMODATION

From the rear of 13 Hyde Road external steps lead up to :-

ENTRANCE HALLWAY

Doors lead to:-

KITCHEN

9' 7" x 6' 9" (2.94m x 2.06m) Window to the rear of the property. Refitted with a range of floor and wall mounted cupboards and work surfaces with inset single drainer sink. Plumbing for washing machine.

INNER HALLWAY

Cupboard housing cylinder. Access to lift space. Doors to :-

BATHROOM

Window to the side of the property. Comprising wash hand basin. Bath with electric shower over. Part tiled walls. Laminate flooring.

CLOAKROOM

Window to the side of the property. Low level WC.

BEDROOM 1

15' 3" x 11' 0" (4.67m x 3.37m) Window overlooking the rear of the property. Wall mounted panel heater.

BEDROOM 2

11' 5" x 8' 1" (3.48m x 2.48m) Window overlooking the front of the property. Wall mounted heater.

LIVING ROOM

13' 5" x 13' 3" (4.10m x 4.04m) Window overlooking the front of the property. Quantum night storage heater.

OUTSIDE

1 Parking space.

AGENTS NOTES

Mains electricity and water. Council Tax Band is A. Prospective tenants must have good all around references and be able to show a gross earned income of circa £24,000 per annum. Sorry no pets or smokers.

13A REAR OF HYDE ROAD

