



Alexandria Road | W13 |

£925,000

A substantial four-bedroom period home on Alexandria Road, a sought-after residential area just moments from West Ealing station.

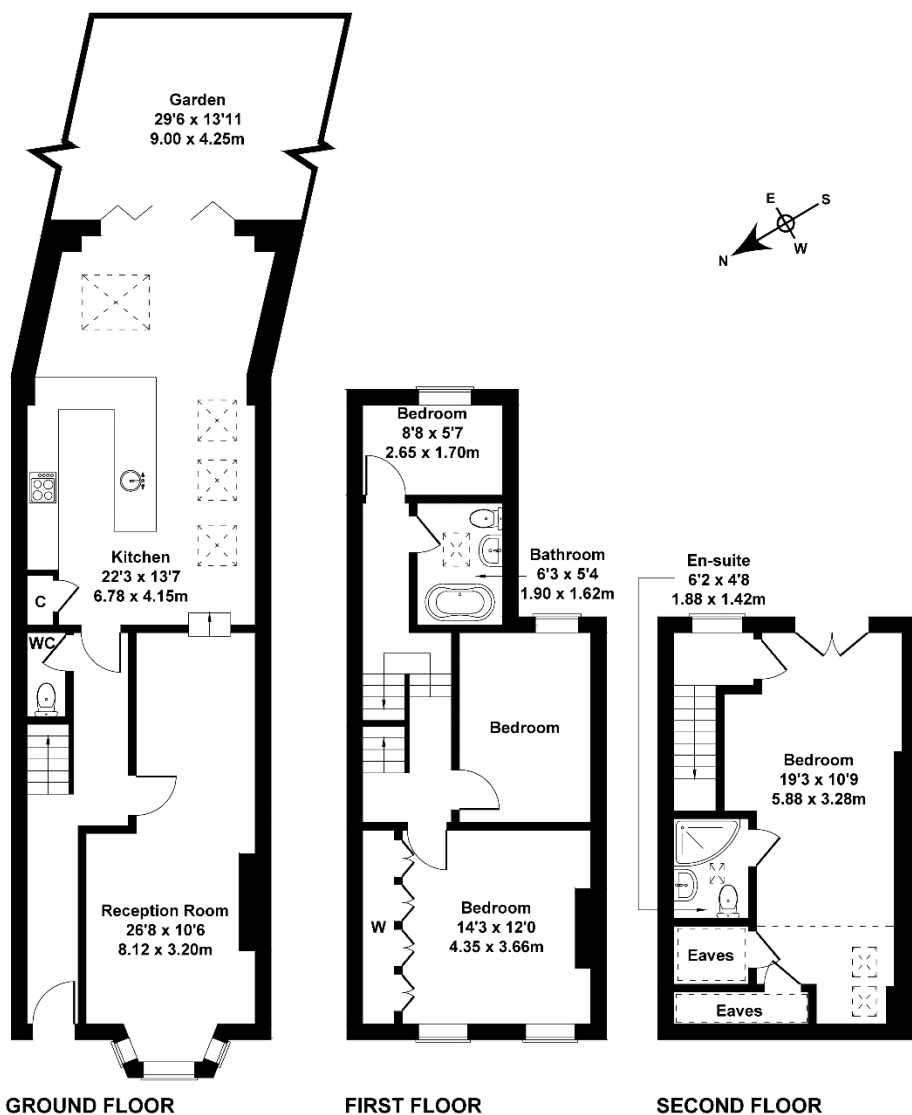
This Edwardian, bay fronted home has been extended to the rear and into the loft and provides lofty and airy rooms including four bedrooms, two bathrooms and is spread over three floors. The property measures 1475 sq ft and provides lots of natural light and this is accentuated with the great ceiling heights.

- Period terraced house
- Four bedrooms
- South facing garden
- Close to Crossrail
- Sought after location
- Finished to high standard



Alexandria Rd

Approximate Gross Internal Area
1475 sq ft - 137 sq m



Not to Scale. Produced by The Plan Portal 2023
For Illustrative Purposes Only.

Contact Details

24 Station Parade
Ealing
London
W5 3LD

www.goviewlondon.co.uk
sales@goviewlondon.co.uk
020 8992 0333

Agents Note: Whilst every care has been taken to prepare these sales particulars, they are for guidance purposes only. All measurements are approximate and are for general guidance purposes only and whilst every care has been taken to ensure their accuracy, they should not be relied upon and potential buyers are advised to recheck the measurements.