



## Bishops Gate, Whitchurch

£155,000

- ONE BEDROOM FIRST FLOOR APARTMENT
- WHITCHURCH VILLAGE LOCATION
- ONE DOUBLE BEDROOM
- OPEN PLAN LIVING & DINING & KITCHEN AREA
- SOUGHT AFTER MODERN DEVELOPMENT
- NO CHAIN
- GREAT INVESTMENT OPPORTUNITY
- EPC Rating: B





## About the property

NO CHAIN!! A spacious and modern, one bedroom, first floor apartment situated in the convenient location in Whitchurch village. All local amenities on your doorstep benefiting secure gated parking and no onward chain.

This property comprises of entrance hall, open plan lounge/diner with a Juliet balcony, a fitted kitchen, one large double bedroom with fitted wardrobes and a family shower room. The property further benefits from allocated, gated parking with visitors spaces available, a telephone entry system as well as plenty of storage.



## Entrance Hall

Entered via a wooden door with security spy hole into hallway area, doors leading to all rooms.

**Bedroom** Upvc double glazed window to rear, coved ceiling, carpet.

## Lounge / Diner

Open plan lounge/ dining room, upvc double glazed french doors opens to Juliet rail, radiators, television point, telephone point, satellite point, coved ceiling, opening into kitchen.

## Kitchen

Fitted with a range of wall and base level units with complimentary work surfaces over, stainless steel sink,

drainer with mixer tap, ceramic tiled splashbacks, integrated 4 ring gas hobs with cooker hood over, fitted fan oven, integrated washing machine and fridge/freezer, wall mounted boiler in cupboard, upvc double glazed windows to side, coved ceiling.

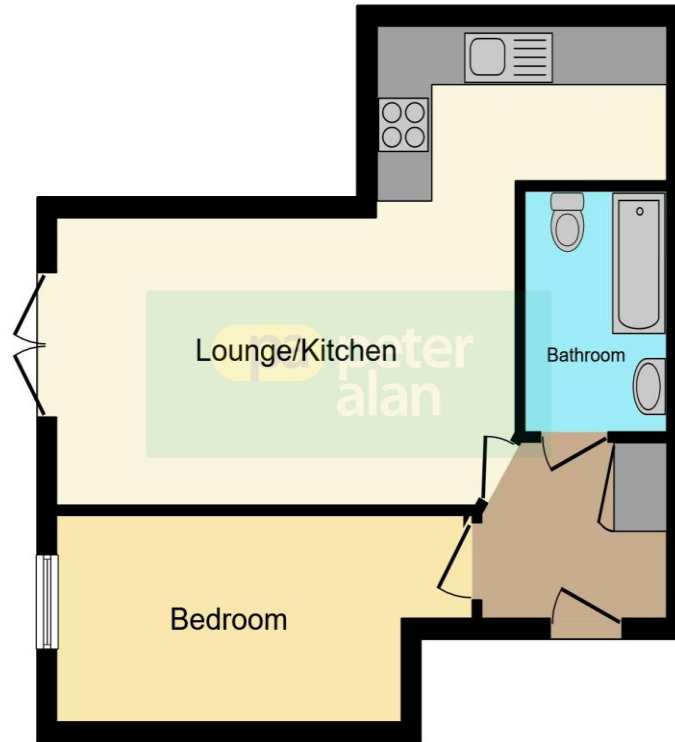
## Outside

Electric gates leading into development with allocated parking and visitors parking, communal garden area to enjoy.

02920 612328

whitchurch@peteralan.co.uk

## Floorplan



This floorplan is for illustrative purposes only and is not drawn to scale. Measurements, floor-areas, openings and orientations are approximate. They should not be relied upon for any purpose and do not form any part of an agreement. No liability is taken for any error or mis-statement. All parties must rely on their own inspections.

## Important Information

Note while we endeavour to make our sales details accurate and reliable, if there is any point which is of particular interest to you, please contact the office and we will be pleased to confirm the position for you. We have not personally tested any apparatus, equipment, fixtures, fittings or services and cannot verify they are in working order or fit for their purposes. Nothing in these particulars is intended to indicate that carpets or curtains, furnishings or fittings, electrical goods (whether wired or not). Gas fires or light fittings or any other fixtures not expressly included form part of the property offered for sale. This computer generated Floorplan, if applicable, is intended as a general guide to the layout and design of the property. It is not to scale and should not be relied upon for dimensions. Tenure: We cannot confirm the tenure of the property as we have not had access to the legal documents. The buyer is advised to obtain verification from their solicitor or surveyor.

Peter Alan Limited is registered in England and Wales under company number 2073153, Registered Office is Cumbria House, 16-20 Hockliffe Street, Leighton Buzzard, Bedfordshire, LU7 1GN. VAT Registration Number is 500 2481 05. For activities relating to regulated mortgages and non-investment insurance contracts, Peter Alan Limited is an appointed representative of Connells Limited which is authorised and regulated by the Financial Conduct Authority. Connells Limited's Financial Services Register number is 302221. Most buy-to-let