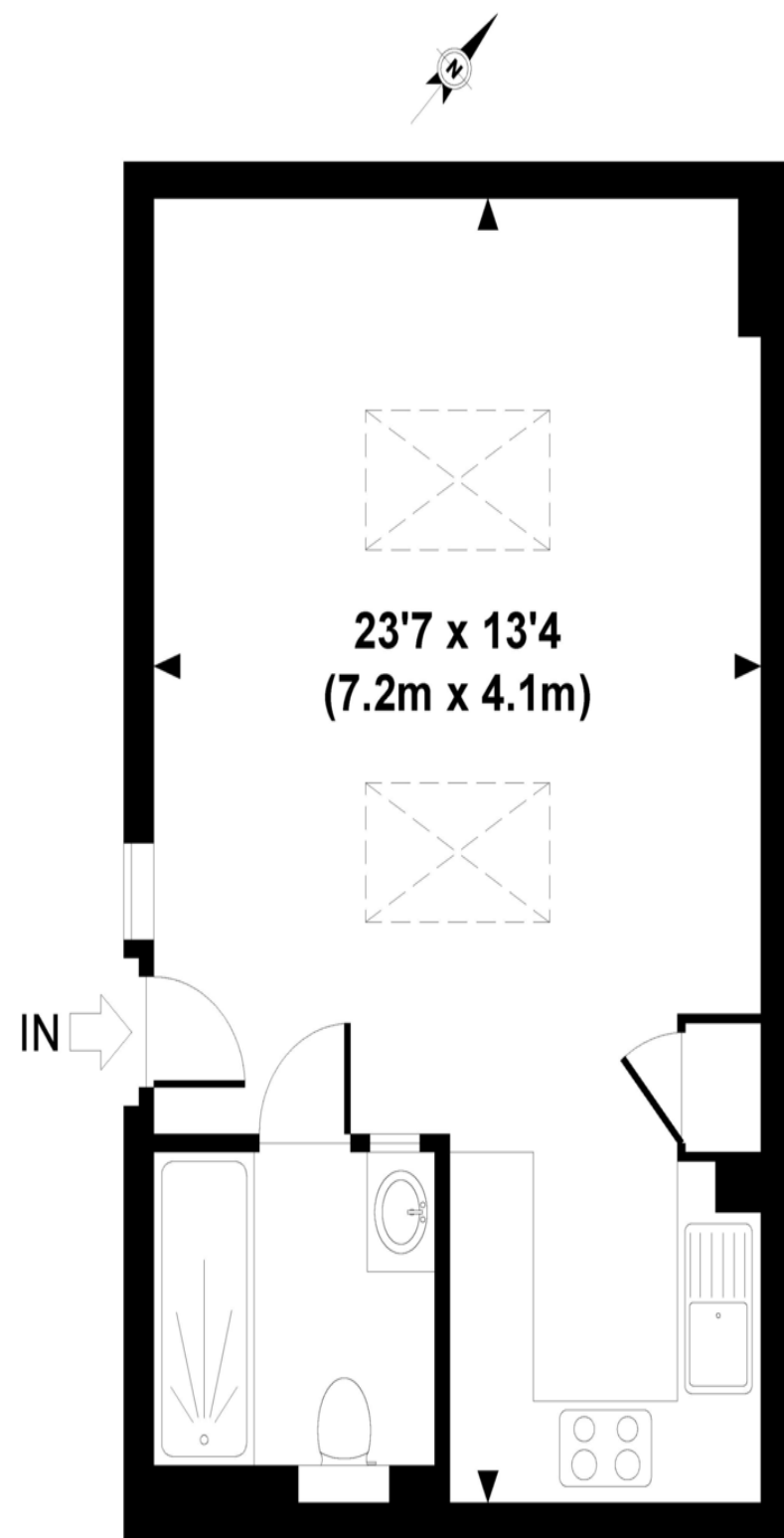


Wilmot Place, NW1



GROUND FLOOR

APPROXIMATE GROSS INTERNAL AREA 314 SQ FT / 29.2 SQ M

Whilst every attempt has been made to ensure the accuracy of this floor plan; measurements of door, windows, rooms and all other items are approximate. No responsibility is taken for any error, omission or mis-statement. This floor plan is for illustrative purposes only, and should be treated as such.



Wilmot Place, NW1 9JS

£399,950 Freehold

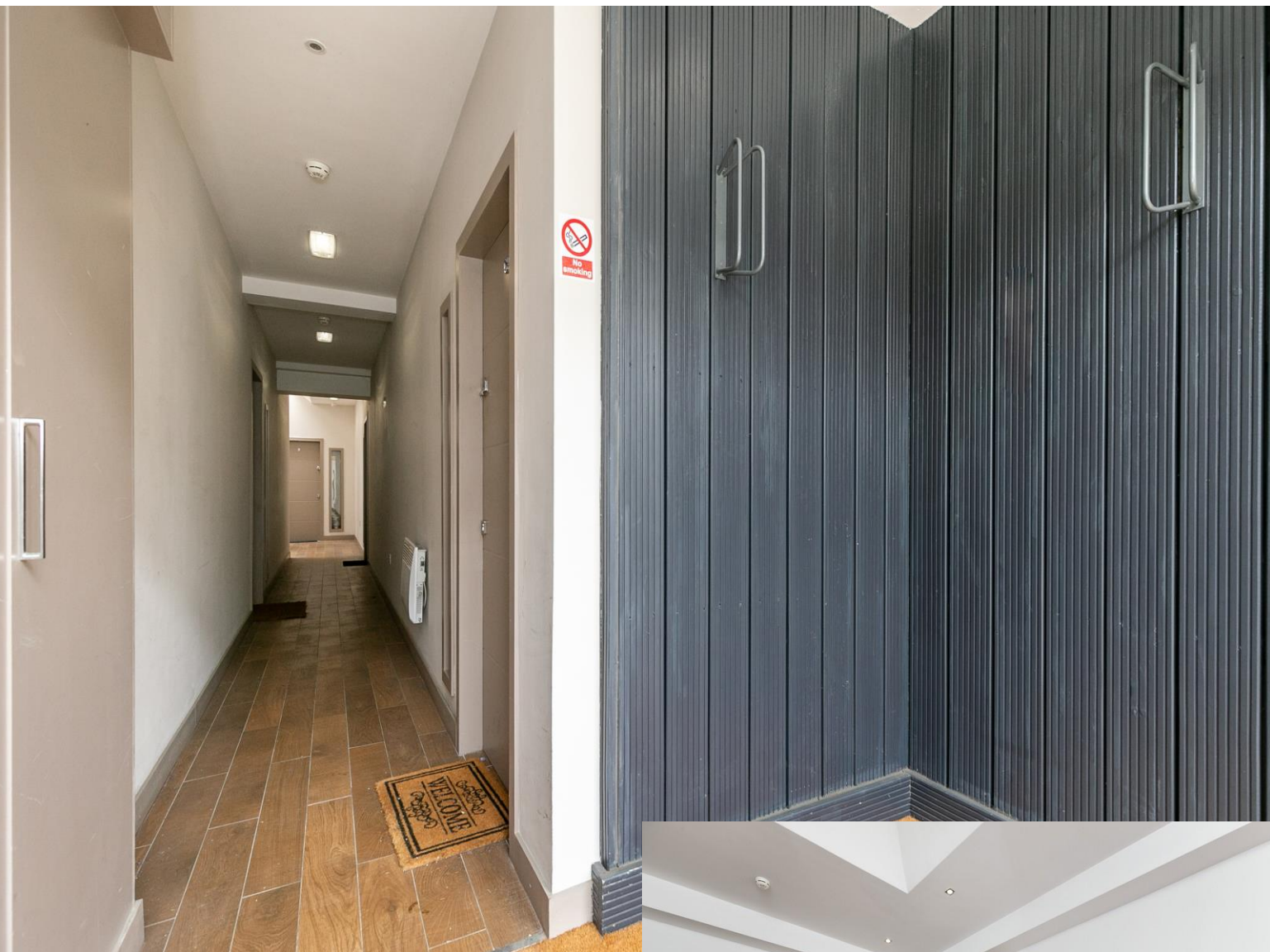
Key Features

- Bright and stylish studio ground floor studio apartment
- High Ceilings
- Ample built in storage.
- Conveniently located for Camden Town's world class amenities
- Recently Installed Air Condition Unit
- Stunning Kichen

Description

Hart and co are delighted to offer this stunning ground floor studio apartment located in the heart of Camden Town the apartment is comprises shower room and a well-equipped fitted kitchen and good Ample storage. The owner has also recently installed an air-conditioning positioned equidistantly between Camden & Morning Crescent's underground station, ideal to take advantage of the best of Camden and Kings Cross. Wilmot place is conveniently located for the great array of shops, eateries, and entertainment in Kentish Town and Camden. Camden Town overground is just a short walk away while Kentish town station offers both local and national rail travel. Camden Town is famed for its market, a warren of fashion and curiosities by the Regent's Canal.

A haven of counter culture, the area is popular with tourists, teenagers and punks.



Energy Efficiency Rating		
	Current	Potential
Very energy efficient - lower running costs		
(92+) A		
(81-91) B	83	83
(69-80) C		
(55-68) D		
(39-54) E		
(21-38) F		
(1-20) G		
Not energy efficient - higher running costs		
England & Wales	EU Directive 2002/91/EC	