



Highbury New Park, N5 2DR

Guide Price £699,500
Share of Freehold



Highbury New Park

Guide Price £699,500

Share of Freehold

A wonderfully grand apartment on the beautiful tree-lined street of Highbury New Park, situated on the first floor of an impressive Victorian Villa. Comprising of a bright feature living room with original sash windows, exposed wood flooring, realistic gas log fire & an open plan kitchen including plenty of storage cupboards. The hallway leads through to a spare room, which can be utilised as a dressing room or study space. To the opposite end of the hallway, is the main bedroom, with a serene outlook over the pretty gardens below. Leading from the bedroom is a stylish & modern bathroom suite. Highbury New Park is a desirable street, close to boutique shops and cafes, moments from Stoke Newington & Highbury, with excellent parks nearby, including Clissold Park, and Highbury Fields. The location is served by excellent transport links via Highbury & Islington station (Victoria & Overground) & Canonbury Station (Overground), alongside multiple bus routes.

- One Double Bedroom
- Guest room/Dressing room
- 721 sqft/67sqm
- Off Street parking
- High Ceilings & Sash Windows
- Short Walk to Clissold Park
- Close to local amenities
- Desirable Location

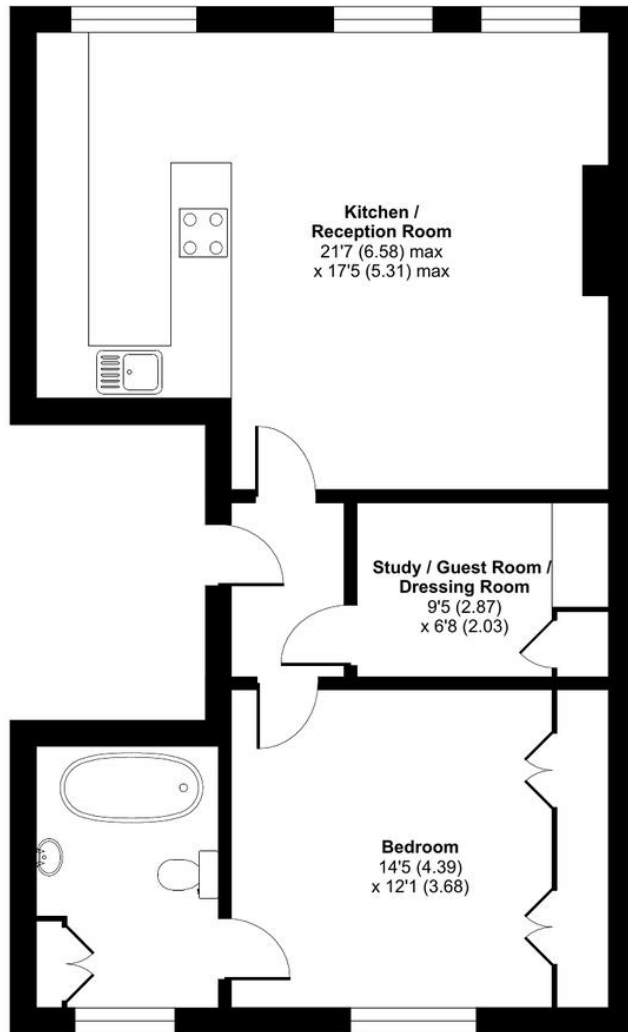




Highbury New Park, London, N5

Approximate Area = 721 sq ft / 67 sq m

For identification only - Not to scale



FIRST FLOOR

DAVID ANDREW

your most valuable asset

Archway Office

671 Holloway Road
London, N19 5SE

T (0)20 7619 3750

Highbury Office

90 Highbury Park
London N5 2XE

T (0)20 7354 9111

Stroud Green Office

167 Stroud Green Road
London N4 3PZ

T (0)20 7281 2000

General Contact

E info@davidandrew.co.uk



Agent's Note:

Whilst Care has been exercised in the preparation of these sales particulars, statements about the property must not be relied upon as representations of statements or fact. Prospective purchasers must make and rely upon their own enquiries and those of professional representatives. The company accept not liability for any error contained in these particulars.



Certified Property Measurer

Floor plan produced in accordance with RICS Property Measurement Standards incorporating International Property Measurement Standards (IPMS2 Residential). © nchecom 2022. Produced for David Andrew. REF: 894138

