

Beetham Tower

Birmingham City Centre

B1 1BA

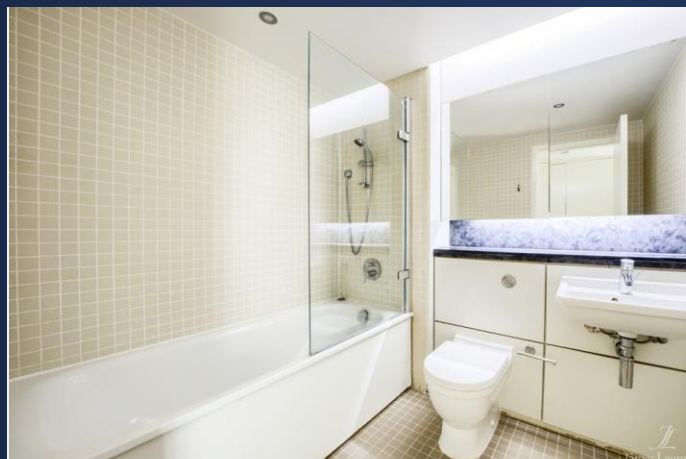
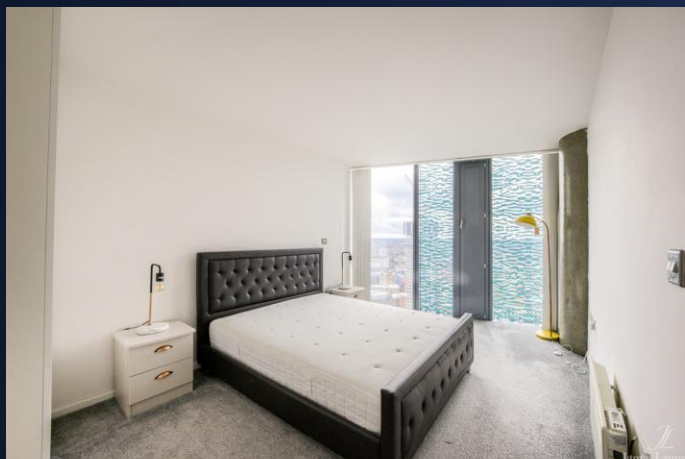
Asking Price Of **£215,000**

Stunning Two Bedroom Apartment

606 Sq. Ft.

Twenty-Sixth Floor Apartment

Sky Garden



Property Description

DESCRIPTION **EWS1 FORM GRANTED** A stunning two-bedroom apartment located on the Twenty-Sixth floor, spanning over 606 Sq. Ft. in the sought after Beetham Tower development.

The apartment briefly comprises of:- An entrance hallway, open plan living area/fitted kitchen with full length glass windows from the lounge allowing for panoramic view, fantastic City scape views from the sky garden, master bedroom, further double bedroom and family bathroom.

The property also benefits from 24 hour concierge service and is in within close walking distance to Grand Central station.

A must view to avoid disappointment.

LOCATION Beetham Tower is one of Birmingham's most iconic buildings and is situated in a central location being just a 5 minute walk to New Street Station. There are plenty of bars and restaurants to be found in the local vicinity as well as being a 0.5 miles walk to the ever popular Brindley Place.

This fantastic apartment needs to be viewed to fully appreciate the space and views on offer.

JAMES LAURENCE ESTATE AGENTS MATERIAL INFORMATION Agents Note: We have not tested any of the electrical, central heating or sanitary ware appliances. Purchasers should make their own investigations as to the workings of the relevant items. Floor plans are for identification purposes only and not to scale. All room measurements and mileages quoted in these sales particulars are approximate. All material information stated below has been provided by our client, but we would request all information to be verified by the purchaser's chosen solicitor.

Fixtures and Fittings: All those items mentioned in these particulars by way of fixtures and fittings are deemed to be included in the sale price. Others, if any, are excluded. However we would always advise that this is confirmed by the

Floor Layout



Total area: approx. 56.4 sq. metres (606.6 sq. feet)

Total approx. floor area 606 sq ft (56 sq m)

Whilst every attempt has been made to ensure the accuracy of the floor plan contained here, measurements of doors, windows, rooms and any other items are approximate and no responsibility is taken for any error, omission, or mis-statement. This plan is for illustrative purposes only and should be used as such by any prospective purchaser. The services, systems and appliances shown have not been tested and no guarantee as to their operability or efficiency can be given. Made with Metropix ©2019.



Energy Efficiency Rating		Current	Potential
Very energy efficient - lower running costs			
(92-100)	A		
(81-91)	B		87
(69-80)	C	77	
(55-68)	D		
(39-54)	E		
(21-38)	F		
(1-20)	G		
Not energy efficient - higher running costs			
England, Scotland & Wales			
EU Directive 2002/91/EC			

Birmingham City Centre Branch

0121 6044060

info@jameslaurenceuk.com

37-39 Ludgate Hill, Birmingham, B3 1EH



Agents Note: Whilst every care has been taken to prepare these sales particulars, they are for guidance purposes only. All measurements are approximate are for general guidance purposes only and whilst every care has been taken to ensure their accuracy, they should not be relied upon and potential buyers are advised to recheck the measurements