



Property Summary

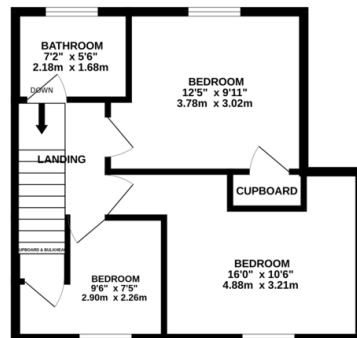
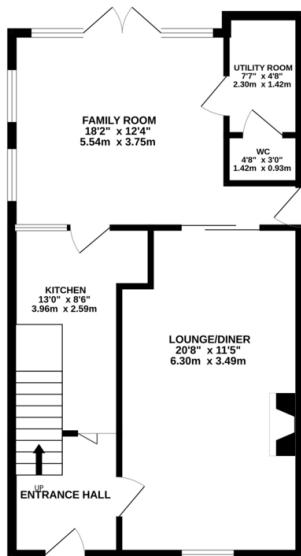
*** No Chain *** Well presented and well proportion family home for sale on the Eyres Monsell/Leicester borders. The accommodation comprises entrance hall, lounge/diner, family room, kitchen, utility room, downstairs w.c., three bedrooms, family bathroom and gardens to the front and rear. The property is an ideal family home or first time buy.



GROUND FLOOR
600 sq.ft. (55.7 sq.m.) approx.

1ST FLOOR
414 sq.ft. (38.5 sq.m.) approx.

EPC to follow



TOTAL FLOOR AREA : 1014 sq.ft. (94.2 sq.m.) approx.
Whilst every attempt has been made to ensure the accuracy of the floorplan contained herein, measurements of doors, windows, rooms and any other items are approximate and no responsibility is taken for any error, omission or mis-statement. This plan is for illustrative purposes only and should be used as such by any prospective purchaser. The services, systems and appliances shown have not been tested and no guarantee as to their operability or efficiency can be given.
Made with Metropix C2023

- No Chain
- Extended
- Downstairs W.C
- Utility Room
- Mid Town House
- Three Bedrooms
- Ideal Family Home
- Well Presented Throughout

phillips george | sales & lettings

Agents Note: Whilst every care has been taken to prepare these sales particulars, they are for guidance purposes only. All measurements are approximate and for general guidance purposes only and whilst every care has been taken to ensure their accuracy, they should not be relied upon and potential buyers are advised to recheck the measurements.

46 Long Street, Wigston, Leicestershire, LE18 2AH

info@phillipsgeorge.co.uk
0116 216 8178

