

Why use S J Smith Estate Agents? Here's some of our reviews to tell you why!

Hours: 8am-7pm Monday to Friday, 8am-5pm Saturday and 10am-2pm Sunday.
Phone: Ashford 01784 243 333 – Staines 01784 779 100
Email: ashford@sjsmithestateagents.co.uk - staines@sjsmithestateagents.co.uk



Sajid Abbasi

I have used SJSmith Estate agents for last 7 years, both as buyer and landlord. They always come across as professional, courteous, and understanding to customer's needs. I continue to use their services and have no complaints.



Abigail P

Our overall experience with s j smith has been great. Everyone we have dealt with has been brilliant and can't thank you enough especially Nicola who has kept us updated and constantly chased the chain for us after a difficult chain and original one falling through. Thank you!!



Robert Boyce

Great service from Amir and the team! We tried to sell through an online agent with no success.... We signed up with SJSmith and then 3 days later we had an offer!
Highly recommend!



Lincoln Williamson

My partner and I recently bought our first home from S J Smith and from start to finish they were excellent. From arranging a viewing, to keeping us updated throughout the whole process and being able to answer all our questions and queries in a very timely manner. There was a number of difficulties with the sale, however Nicola went above and beyond in helping these difficulties get resolved, keep us in the loop, offer support and guidance and ensure that the sale happened as quick as possible. If not for Nicola, I honestly don't think the sale would have gone ahead! Thank-you Nicola and thank you S J Smith!



Katie Jameson

Great service, kept up to date throughout the whole process as the first time selling a home.



Louise Cambray

We bought and sold through SJ Smith and can't recommend them enough. Everyone at the office is great but we knew we were in safe hands with Louis from the off. He was so knowledgeable and took the time to listen to what was important to us. He was always available to talk things through and help solve any issues. Nothing was ever too much trouble, and he continually went over and above - genuinely a really nice guy! Nicola was also amazing, so efficient and made what was a very difficult process as painless as possible. We are very grateful to both of them for all of their help!



6 Station Approach
Ashford
Middlesex
TW15 2QN

t: 01784 243333
e: ashford@sjsmithestateagents.co.uk
www.sjsmithestateagents.co.uk



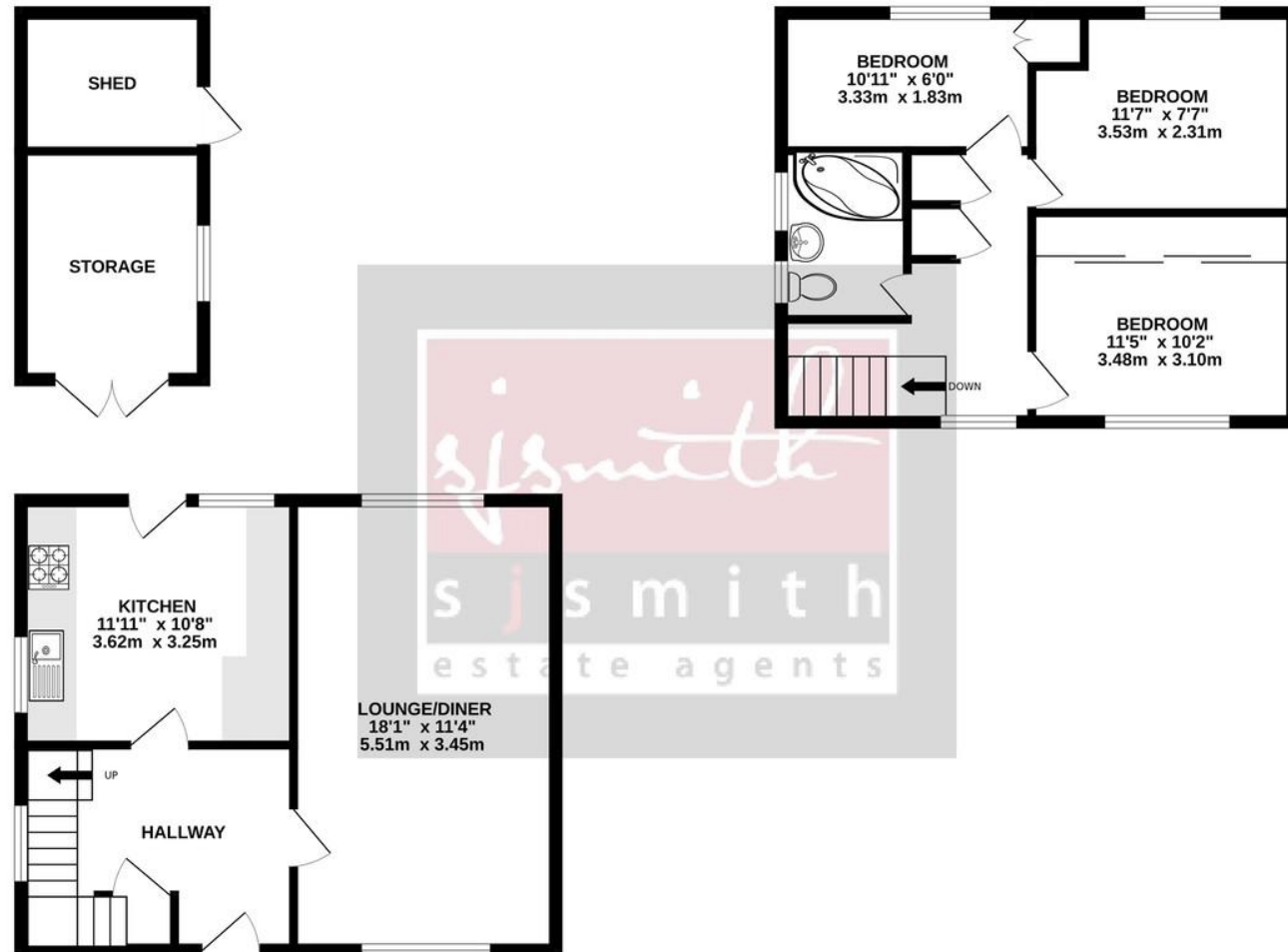
13 Portland Crescent, Feltham, Greater London , TW13 4RY
Guide Price £450,000 - Freehold

A good size three bedroom semi detached family home situated in a quiet cul-de-sac in Feltham on the borders of Ashford close to local bus routes and amenities. Benefits include: an won driveway to the front allowing parking for two cars, a spacious entrance hall leads to the good size 18ft1 through lounge diner with patio doors out to the garden, and there is also a good size fitted kitchen on the ground floor. On the first floor there are three good size bedrooms, the master of which has fitted wardrobes and there also access to the good size loft space and a three piece bathroom suite with large corner bath. To the rear is a good size rear garden measuring about 60th in length with side access and this is South facing with great potential to extend the house subject to the usual consents.

- OWN DRIVEWAY
- 60FT SOUTH FACING GARDEN
- QUIET CUL-DE-SAC
- DOUBLE GLAZED
- CLOSE TO LOCAL BUS ROUTES AND AMENITIES
- POTENTIAL TO EXTEND (STPP)
- EPC RATING TBC

GROUND FLOOR
585 sq.ft. (54.3 sq.m.) approx.

1ST FLOOR
398 sq.ft. (37.0 sq.m.) approx.



TOTAL FLOOR AREA : 983 sq.ft. (91.3 sq.m.) approx.

Whilst every attempt has been made to ensure the accuracy of the floorplan contained here, measurements of doors, windows, rooms and any other items are approximate and no responsibility is taken for any error, omission or mis-statement. This plan is for illustrative purposes only and should be used as such by any prospective purchaser. The services, systems and appliances shown have not been tested and no guarantee as to their operability or efficiency can be given.
Made with Metropix ©2024



Council Tax

Hounslow Borough Council, Tax Band C being £1672.46 for 2023/24

Council tax bands can be reassessed by local authorities at any point, the council tax band is only taken at point of listing and should not be relied on as current banding

Agent note Under Consumer Protection Regulations we have endeavoured to make these details as reliable and as accurate as possible. The accuracy is not guaranteed and does not form part of any contract as the details are prepared as a general guide. We have not carried out a detailed survey or tested any appliances, specific fittings, or services (gas/electric). Room sizes should not be relied upon for carpets or furnishing nor should internal photos as these are intended as a guide only and may have changed since. It should not be assumed that any furniture/fittings are included. Lease, ground rent, maintenance or any other charges have been provided by the vendor and their accuracy cannot be guaranteed. We always advise a buyer should obtain verification on points via a solicitor.