



Gillespie Road, N5 1LH

£1,400,000
Freehold



Gillespie Road

£1,400,000

Freehold

A superbly located mid-terraced, Victorian family home in great location in Highbury. This three storey house is offered chain free and offers 1381sqft/128.3sqm of living space across the three levels. The house also benefits of double reception room across the lower levels of this house extending on to a kitchen dining area and then on to a private 42 ft mature garden. In addition to this there are two main bathrooms located on the raised ground floor and top floor, four good size bedrooms, which are also located on the raised and top floors of this house. Gillespie Road is a quiet road in close proximity to Gillespie Road School (outstanding ofsted rating), shops and cafes of Highbury, as well as the pleasant green spaces of Clissold Park & Highbury Fields. It is served by unparalleled access to Zone Two Victoria/Piccadilly lines, Overground and National Rail, and regular bus routes

- Four Bedroom House
- Arranged over Three Levels
- Double Reception
- Private Garden
- 1381sqft/128.3sqm
- Great Location
- Good Transport Links
- Chain Free Sale



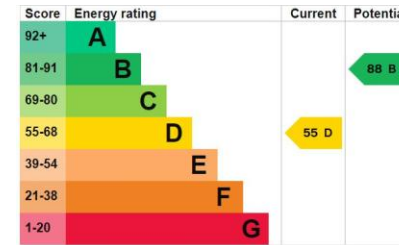
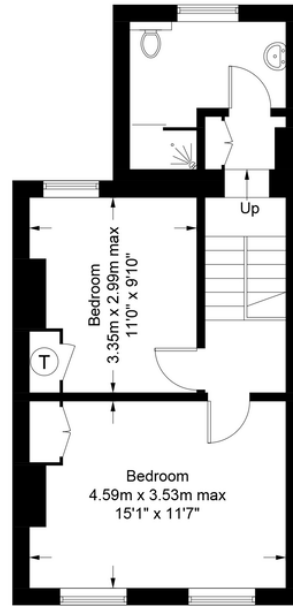
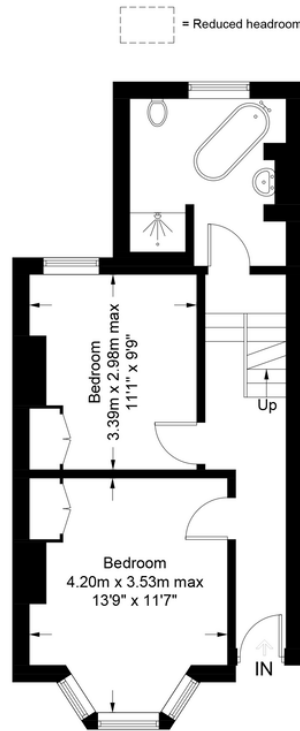
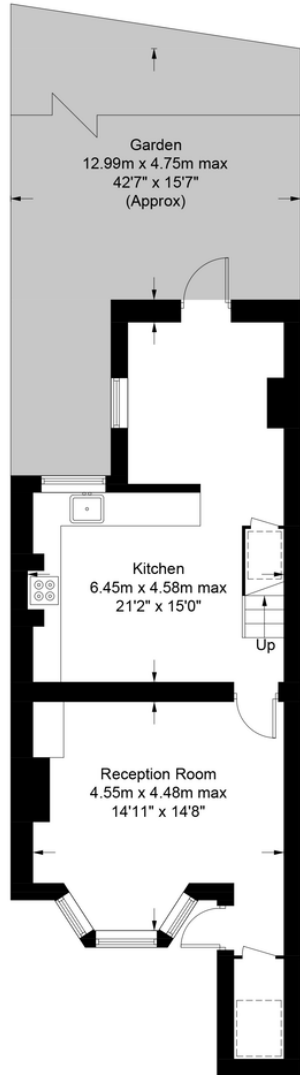




Gillespie Road, N5
 Approximate Gross Internal Area
 (Excluding Reduced Headroom)
 1364 sq ft / 126.7 sq m
 Reduced Headroom = 17 sq ft / 1.6 sq m

DAVID ANDREW

your most valuable asset



Archway Office

671 Holloway Road
 London, N19 5SE

T (0)20 7619 3750

Highbury Office

90 Highbury Park
 London N5 2XE

T (0)20 7354 9111

Stroud Green Office

167 Stroud Green Road
 London N4 3PZ

T (0)20 7281 2000

General Contact

E info@davidandrew.co.uk



Certified Property Measurer

This plan is for layout guidance only. Not drawn to scale unless stated. Windows and door openings are approximate. Whilst every care is taken in the preparation of this plan, please check all dimensions, shapes and compass bearings before making any decisions reliant upon them. (ID991445)



Agent's Note:

Whilst Care has been exercised in the preparation of these sales particulars, statements about the property must not be relied upon as representations of statements or fact. Prospective purchasers must make and rely upon their own enquiries and those of professional representatives. The company accept not liability for any error contained in these particulars.