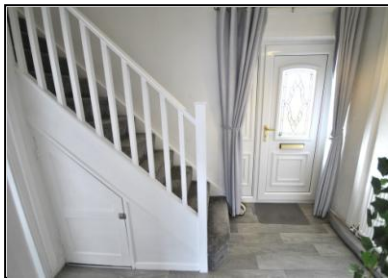


3 Ashville, New Rossington



A beautifully presented 3 bedroom semi detached home having spacious living accommodation with great family rear garden, driveway for off road parking, gas heating, double glazing making this an ideal opportunity for a first time buyer or starter family, offered with no chain and comprises of: Entrance hallway, lounge with views over the rear garden, separate dining room with access into the kitchen, first floor landing, 3 bedrooms and bathroom suite. Located not far from local shops and facilities the property has been redecorated, majority new floor coverings, gates which provide security to the rear gardens, garage and driveway. Viewing highly recommended.
NON STANDARD CONSTRUCTION. (Laing Easiform).

Asking Price Of £140,000