




Andrew Pearce
PINNER

LITTLE ORCHARD CLOSE, PINNER, HA5 3DR

£450,000



Situated within one of the most sought after developments in Pinner, is this luxury two bedroom ground floor apartment. Particular highlights of this property are the larger than average internal accommodation and chain free.

Internal The accommodation briefly comprises of hallway and access to storage cupboards. There is a bright and spacious lounge/dining room which is presented in good condition with multiple windows to the front and rear aspect.

There is a recently fitted kitchen with ample worktop space and a range of eye and base level units as well as integrated appliances.

There is a light filled master bedroom which boasts multiple windows roving lots of natural light followed by a good sized second bedroom. To complete this property is a family bathroom as well as a separate w/c.

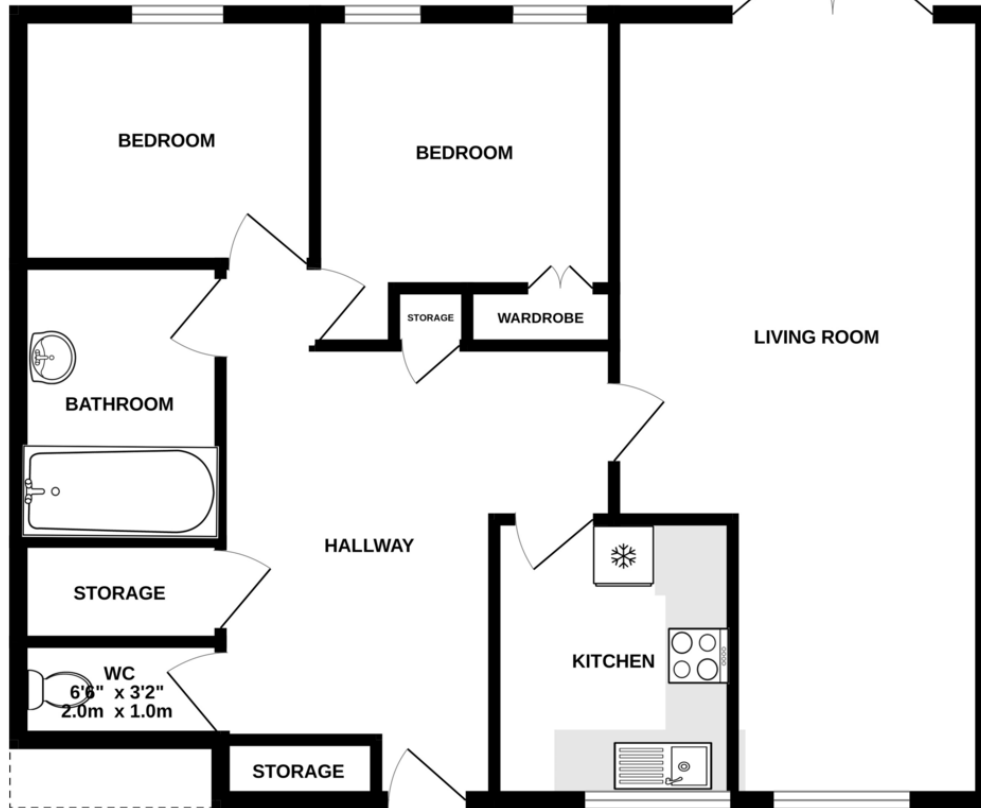
Outside Surrounding the property are communal gardens which consist of a lush lawn area with mature trees and flowering shrubs.

Location Little Orchard Close is situated in a sought-after Pinner Village location just moments from Hatch End and Pinner High Street which benefits from an array of highly regarded restaurants, shops, cafes and bars. The Metropolitan Line can be accessed from Pinner station, this line commutes into the heart of Central London within approx 30 minutes.

The property also has the added benefit of being sold with a share of the freehold and has been newly carpeted throughout.



GROUND FLOOR
770 sq.ft. (71.6 sq.m.) approx.



TOTAL FLOOR AREA : 770 sq.ft. (71.6 sq.m.) approx.

Whilst every attempt has been made to ensure the accuracy of the floorplan contained here, measurements of doors, windows, rooms and any other items are approximate and no responsibility is taken for any error, omission or mis-statement. This plan is for illustrative purposes only and should be used as such by any prospective purchaser. The services, systems and appliances shown have not been tested and no guarantee as to their operability or efficiency can be given.
Made with Metropix ©2023

