



 SevenKeys

Dunkeld Close, Gateshead, Tyne and Wear

Offers in region of £270,000

- Four bedroom detached home
- No Onward Chain
- Master bedroom with en-suite
- Modern interior throughout
- Updated kitchen and bathrooms
- EPC rating D
- Double glazing & Gas central heating



This four bedroom detached home would suit a number of buyers, including couples, families and professionals looking for an easy commute into Newcastle City Centre or surrounding areas. Situated nearby local schools, shops and amenities, the property is close to the Felling bypass and offers good transport links to the A1(M), A19, Metro Stations and Gateshead interchange.

Upon entering the property there is a small porch area that leads into the living room with media wall and downlights. Double doors enter into the modern fitted kitchen with granite worktops, gas hob, oven & extractor, ceramic sink and a number of wall and base units. Downstairs WC and utility that leads out into the garden.

To the first floor there are four bedrooms including master with en-suite shower room, a family bathroom with three piece suite consisting of low level WC, basin with vanity unit and bath with overhead rain shower.

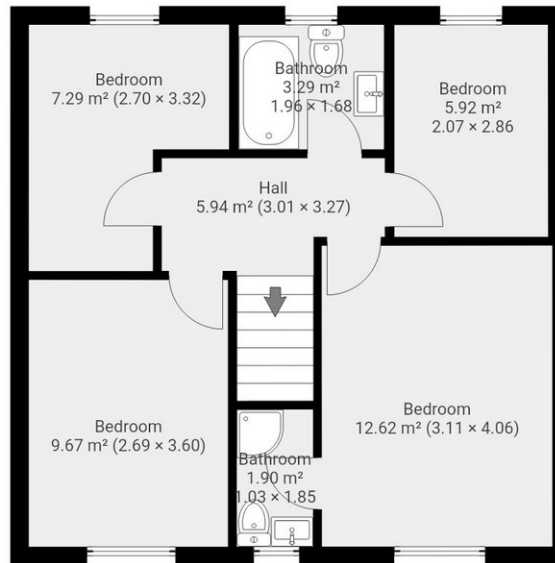
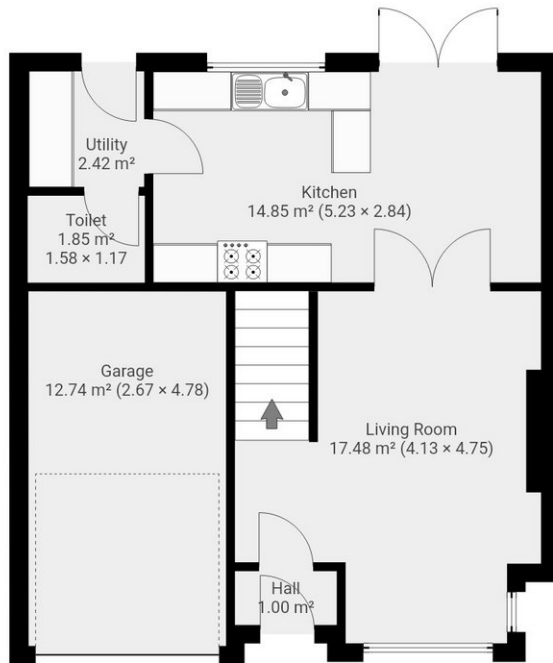
Externally the property boasts well maintained gardens to the front, side and rear with off street parking driveway leading to the garage.

Request your viewing online today at SevenKeys.co.uk.









THIS FLOORPLAN IS PROVIDED WITHOUT WARRANTY OF ANY KIND. SEVEN KEYS DISCLAIMS ANY WARRANTY INCLUDING, WITHOUT LIMITATION, SATISFACTORY QUALITY OR ACCURACY OF DIMENSIONS.

COUNCIL TAX BAND

Tax band

TENURE

Freehold

Energy Efficiency Rating		Current	Potential
Very energy efficient - lower running costs			
(92 plus)	A		
(81-91)	B		84
(69-80)	C		
(55-68)	D	62	
(39-54)	E		
(21-38)	F		
(1-20)	G		
Not energy efficient - higher running costs			

OFFICE

Unit 2, Boston House
Fifth Avenue Business Park
Gateshead
Tyne and Wear

T: 0191 497 1797

E: info@sevenkeys.co.uk

W: www.sevenkeys.co.uk

Agents Note: Whilst every care has been taken to prepare these particulars, they are for guidance purposes only. All measurements are approximate and are for general guidance purposes only and whilst every care has been taken to ensure their accuracy, they should not be relied upon and potential buyers/tenants are advised to recheck the measurements