



# RAMSEY VIEW LLANUNWAS

Llanunwas | Solva | Haverfordwest | Pembrokeshire | SA62 6UJ



RAMSEY VIEW LLANUNWAS

---

## RAMSEY VIEW LLANUNWAS

---

Llanunwas, Solva is a small country estate dating back 400 years standing in glorious isolation on the cliffs in the Pembrokeshire Coast National Park. Ramsey View is an exceptional duplex apartment, located in what was originally a large Georgian house, and has been finished to the highest of standards throughout, having been recently refurbished, now offers a contemporary opulence. The windows and high ceilings offer a spacious tranquillity with magnificent views over to Ramsey Island, as the name suggests!

With your own front door and large welcoming entrance hall, downstairs wc, the open plan living space has a modern fitted kitchen, while the comfortable lounge with dual aspect makes the most of the wonderful sea views out over St Brides Bay. The spacious master bedroom enjoys the same dual aspect enticing you to soak up the panoramic views to Ramsey Island and St Davids headland, two further bedrooms and bathroom complete the interior here. Externally there is a very pleasant and private shared courtyard and gardens with uninterrupted views along the coast and ample parking.

Approaching the properties via the woodland driveway, Llanunwas offers it all with breath-taking sea views across St Brides Bay.

Llanunwas, translates as 'church of the one servant', and has been tastefully restored to 7 apartments and 2 cottages with many traditional stone and slate features having been retained, both internally and externally around the properties. Offering spacious grounds and communal patio area.





Set in extensive, communal lawned grounds there is plenty of space for children to play or to enjoy a relaxing alfresco meal while you soak up the glorious views over the cliff tops and out to sea over St Brides Bay. St Davids with its historic cathedral and excellent facilities is only a short car journey away, the Pembrokeshire Coastal Path is approximately 400 yards away. The picturesque harbour village of Solva is within walking distance, enjoy wandering the upper and lower parts of the town with its shops, galleries and excellent pubs.

Offered with no onward chain this property MUST be seen to be appreciated!



Score	Energy rating	Current	Potential
92+	A		
81-91	B		
69-80	C		80 C
55-68	D		
39-54	E		
21-38	F		
1-20	G	20 G	











We specialise in offering the finest countryside, luxury, and special properties in Ceredigion, Pembrokeshire and all across West Wales. Our coverage includes Aberystwyth, Tregaron, Lampeter, Aberaeron, Newquay, Cardigan Bay and all the surrounding villages and area.

Our team possesses extensive regional knowledge, providing exceptional service for buying or selling properties. With a deep understanding of local markets, we offer accurate and current advice on trends and opportunities in the West Wales property market.

Renowned for its tranquil, rural, and unspoiled beauty, the region offers a peaceful escape with low crime rates, deserted beaches, and strong family values. We offer a range of country houses, old farmhouses, large character homes, and cottages to suit various tastes and budgets.

At Fine & Country West Wales, we pride ourselves on our expertise in the luxury property market across Ceredigion. Our aim is to deliver the best results for both buyers and sellers.

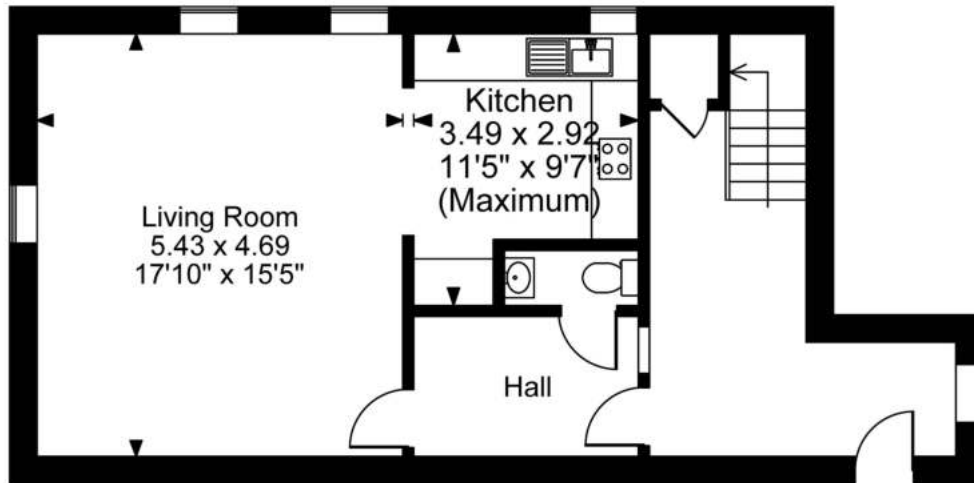
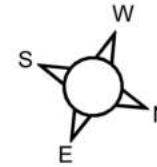
If you are selling your home, we provide tailored strategies and free marketing advice to help you achieve the best price. We also offer a Re-Launch Strategy for properties that have been off or on the market for an extended period, all in complete confidence. We are passionate about helping you find your dream home or secure the best price for your property.

Contact us today - we look forward to hearing from you. For any queries, contact the office at 01974 299055 or [westwales@fineandcountry.com](mailto:westwales@fineandcountry.com)

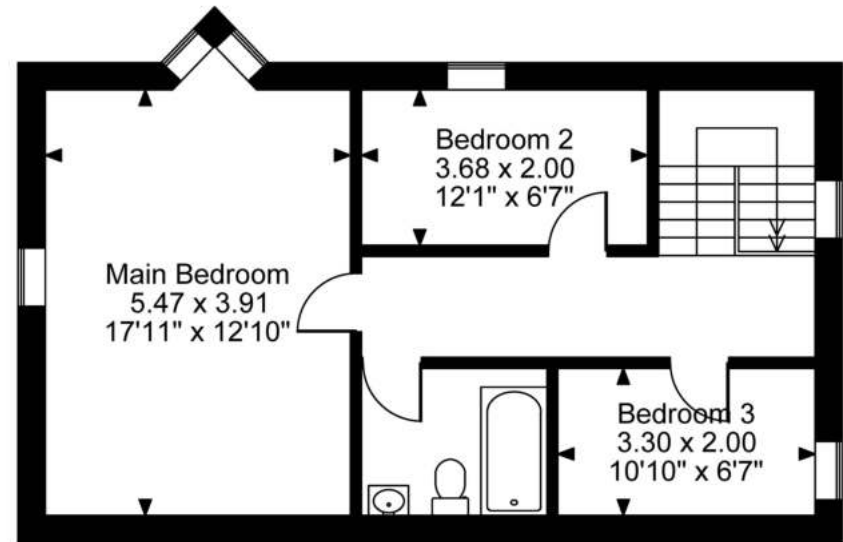
Follow us on our socials



Ramsey View Llanunwas, Llanunwas, Solva, Haverfordwest  
Approximate Gross Internal Area  
1168 Sq Ft/109 Sq M



Ground Floor



First Floor

**FOR ILLUSTRATIVE PURPOSES ONLY - NOT TO SCALE**

The position & size of doors, windows, appliances and other features are approximate only.

© ehouse. Unauthorised reproduction prohibited. Drawing ref. dig/8617769/MPE





Fine & Country West Wales

The Gallery, Station Approach, Station Building, Aberystwyth, SY23 1LH

Tel: 01974 299 055 | [nigel.salmon@fineandcountry.com](mailto:nigel.salmon@fineandcountry.com)

