



POST BOX APARTMENTS

BIRMINGHAM, B1 1LP

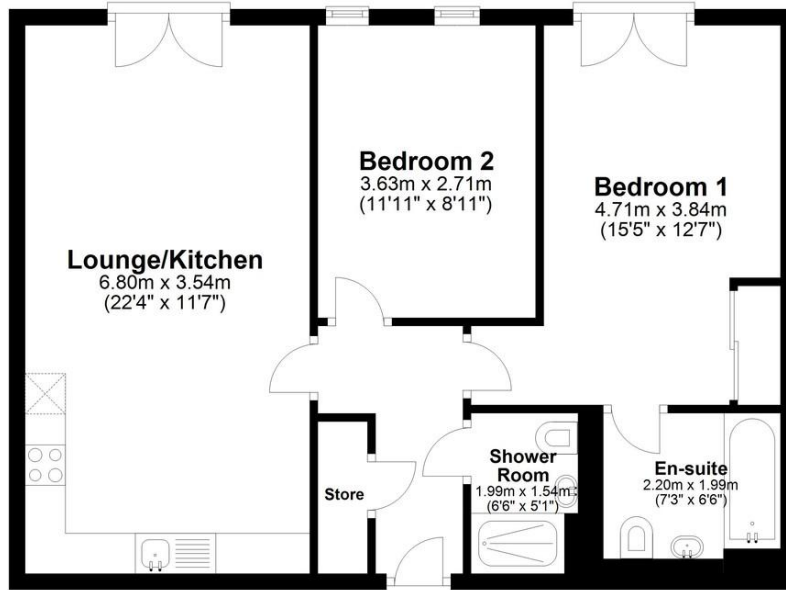
£1150.00 PCM

POSTBOX APARTMENTS | Two Bedrooms | Two Bathrooms | Furnished | Secure & Allocated Parking |

Davidson

Floor Plan

Approx. 63.8 sq. metres (686.3 sq. feet)

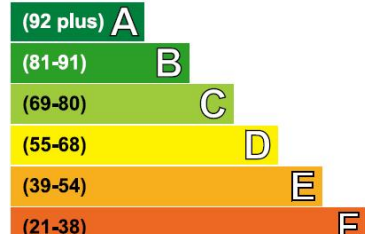


Total area: approx. 63.8 sq. metres (686.3 sq. feet)

This floor plan is not to scale and is for illustration/marketing purposes only.
Plan produced using PlanUp.

Energy Efficiency Rating

Very energy efficient - lower running costs



Current	Potential
82	85

Davidson

OFFICE

14 Frederick Road

Birmingham

West Midlands

B15 1JD

0121 455 7727

info@davidsonstates.co.uk

www.davidsonstates.co.uk

Agents Note: Whilst every care has been taken to prepare these particulars, they are for guidance purposes only. All measurements are approximate and are for general guidance purposes only and whilst every care has been taken to ensure their accuracy, they should not be relied upon and potential buyers/tenants are advised to recheck the measurements