



Purves Road, London NW10

£595,000 Freehold

Welcome to Purves Road – a charming two-bedroom ground floor apartment in the heart of Kensal Rise. This freehold property offers a well-proportioned layout, featuring a spacious reception room, a functional kitchen, and a modern shower room. A key highlight is the south-facing garden, providing a private outdoor space perfect for relaxation or entertaining. Additionally, there is potential to extend (STPP), allowing you to further enhance the living space to suit your needs. Located in a sought-after area, Purves Road benefits from excellent transport links, vibrant local amenities, and the welcoming community of Kensal Rise. Don't miss this fantastic opportunity —get in touch today to arrange a viewing!

- Period property
- Ground floor
- Two double bedrooms
- Chain free
- Freehold
- South facing garden
- Potential to extend (STPP)
- Great location
- Blank canvas
- Close to shops and transports

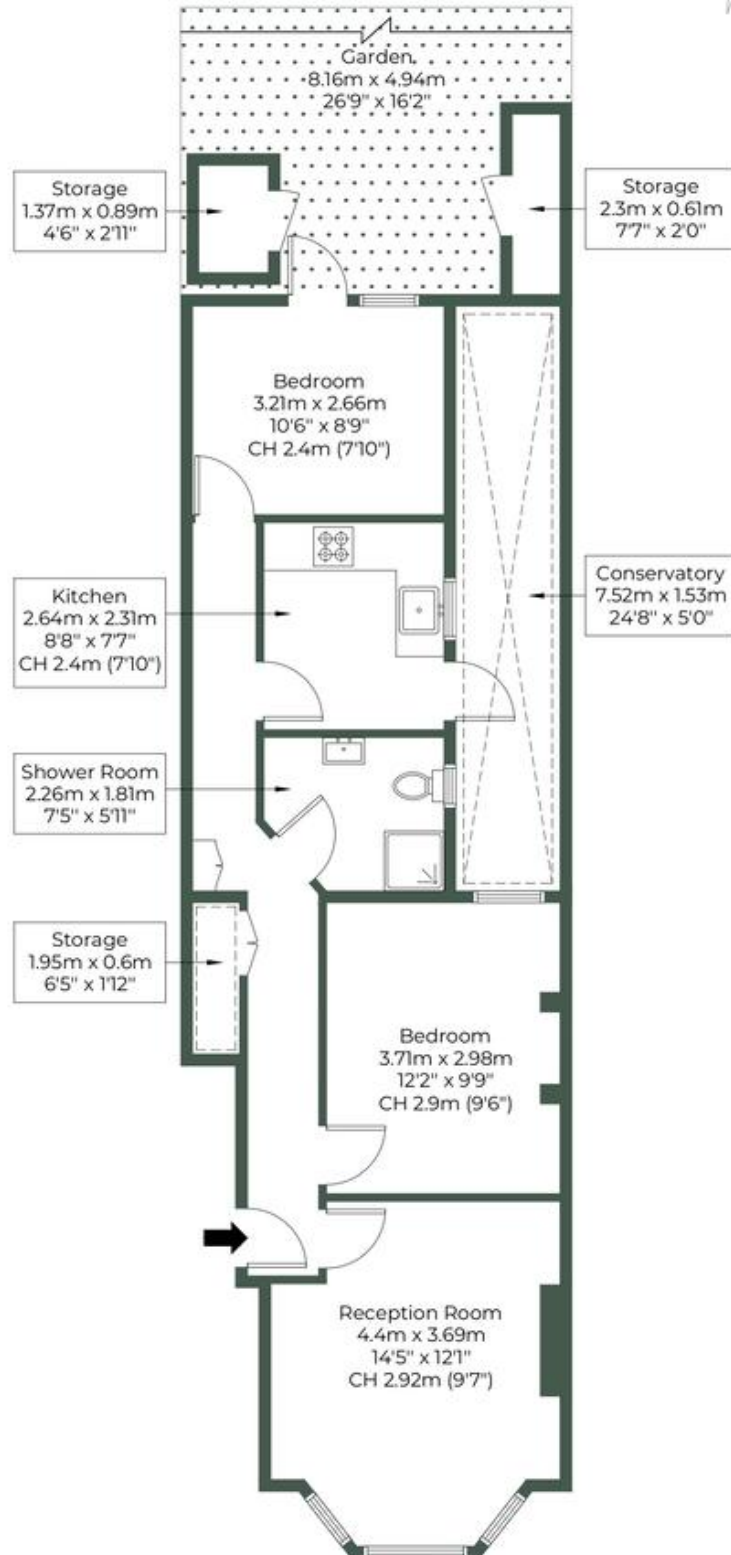
PURVES ROAD, NW10 5TG

Approximate Gross Internal Area = 67.5 sq.m / 727 sq.ft

Restricted head height = 1.5 sq.m / 16 sq.ft

Storages = 2.6 sq.m / 28 sq.ft

Total = 71.6 sq.m / 771 sq.ft



Ground Floor



= Reduced headroom below 1.5m / 5'0"

M MILE

MONEY LAUNDERING REGULATIONS 2003: Intending purchasers will be asked to produce identification documentation at a later stage and we would ask for your co-operation in order that there will be no delay in agreeing the sale.

General: While we endeavour to make our sales particulars fair, accurate and reliable, they are only a general guide to the property and, accordingly, if there is any point which is of particular importance to you, please contact the office and we will be pleased to check the position for you, especially if you are contemplating travelling some distance to view the property.

Measurements: These approximate room sizes are only intended as general guidance. You must verify the dimensions carefully before ordering carpets or any built-in furniture.

Services: Please note we have not tested the services or any of the equipment or appliances in this property, accordingly we strongly advise prospective buyers to commission their own survey or service reports before finalising their offer to purchase.