



2 Bedroom 1st Floor Maisonette Park Road, Kingston Upon Thames. £399,999 Share of Freehold

A two double bedroom 1st floor maisonette in need of complete modernisation, situated in a quiet residential road within the popular North Kingston area.

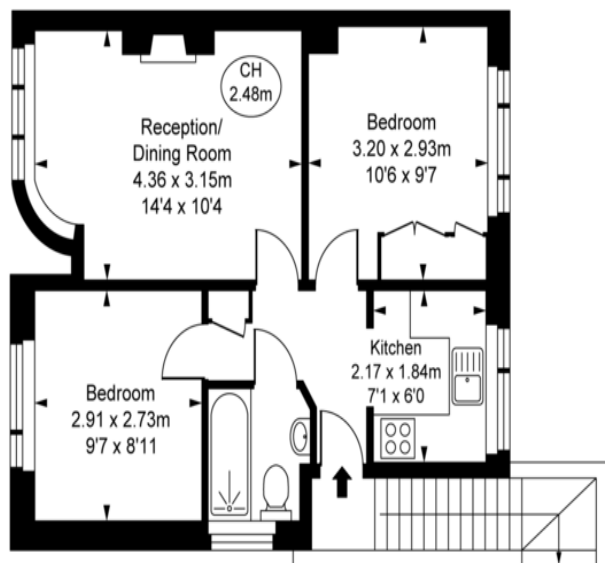
Within easy walking distance of Royal Richmond Park, sought after schools & fantastic transport links.

Offered with 35' South West Facing private garden,
double glazed windows, gas central heating
Sold with no onward chain

WWW.STACKANDBONNER.COM

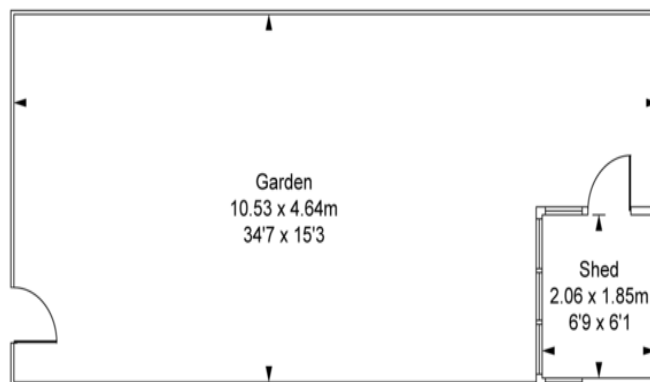
020 8974 8844
sales@stackandbonner.com





First Floor

Park Road, KT2
Approximate Gross Internal Area
43.12 sq m / 464 sq ft
(CH = Ceiling Heights)



Ground Floor



This plan is not to a given scale. A detailed layout plan to scale for valuation is available on request. All measurements and areas are within 1% tolerance and have been prepared in accordance with industry standards as defined in the RICS Code of Measuring Practice
© Fulham Performance

- Two Double Bedrooms
- Living Room with Feature Fireplace
- 1st Floor – 464 sq ft
- 35' South West Facing Private Rear Garden
- Separate Fitted Kitchen
- Fitted Bathroom Suite
- Within Easy Walking Distance of Local Sought After Schools
- Sold With No Onward Chain
- Share Of Freehold / Lease: TBC
- Service Charge: TBC
- Ground Rent: TBC
- Council Tax Band C £2,211.86