

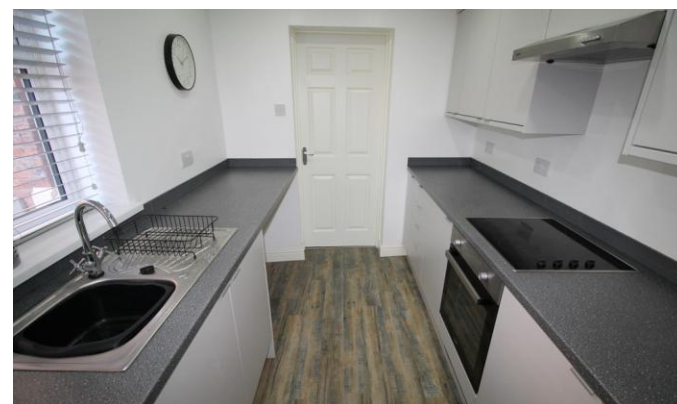


5 St. Oswalds Terrace

Shiney Row
Houghton-Le-Spring
DH4 4JX

£45,000
Leasehold

Ground Floor Flat
Two Bedrooms
Gas Central Heating & Double Glazing
Close to Local Amenities & Transport
Links
No Onward Chain
Viewing Recommended





Safe and Secure welcome to the market this Two Bedroom Ground Floor Flat in the popular area of St Oswalds Terrace, Shiney Row.

This spacious home benefits from gas central heating and double glazing.

Close to local amenities and transport links, the property would suit a variety of buyers.

Viewings recommended.

LOUNGE

13' 9" x 13' 6" (4.2m x 4.13m)

KITCHEN

11' 5" x 7' 3" (3.5m x 2.21 m)

BEDROOM 1

13' 2" x 10' 9" (4.02m x 3.29m)

BEDROOM 2

10' 2" x 7' 3" (3.10m x 2.23m)

BATHROOM





Local Authority
Council Tax Band
EPC Rating

Sunderland City Council

A

D

Houghton le Spring

24-25 Westbourne Terrace
Houghton Le Spring
Tyne And Wear
DH4 4QT

Contact

0191 3854477
info@safeandsecureproperties.c
o.uk
safeandsecureproperties.co.uk

Agents Note: Whilst every care has been taken to prepare these particulars, they are for guidance purposes only. All measurements are approximate and are for general guidance purposes only and whilst every care has been taken to ensure their accuracy, they should not be relied upon and potential buyers/tenants are advised to recheck the measurements.