



2 Bedroom Luxury Apartment Queenshurst Square, Kingston Upon Thames. **£675,000 Leasehold**

A stunning Berkeley built contemporary two double bedroom apartment located on the 6th floor of Queenshurst Square in Kingston upon Thames.

The apartment offers spacious open plan living with a high specification modern kitchen.

Principal bedroom with a dressing area and a luxury ensuite shower room.

Further double bedroom and a family bathroom.

The property also boasts a private terrace with far reaching views.

Queenshurst Square Residents benefit from 24 hour concierge service, communal landscaped garden with water features, residents health suite, screening room and media room.

This exceptional property has a secure underground parking and is offered to the market chain free.

Queenshurst Square is set in the centre of Kingston, within a short walk to the river Thames, Kingston's historic town centre and mainline station with frequent trains to London Waterloo.

WWW.STACKANDBONNER.COM

020 8974 8844

sales@stackandbonner.com



Hamond Court, KT2
Approximate Gross Internal Area
72.2 sq m / 777 sq ft

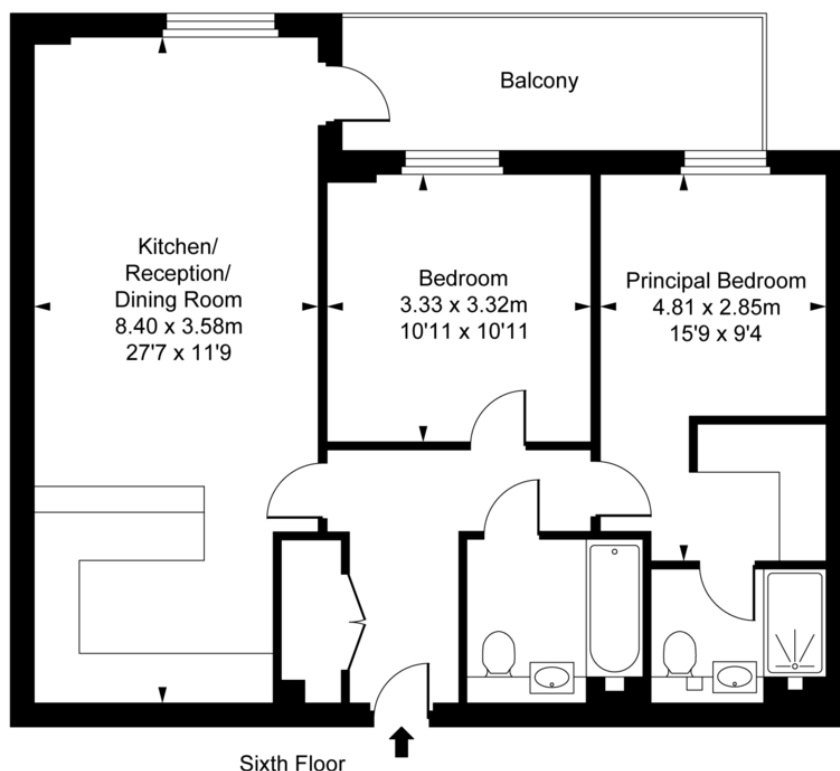


ILLUSTRATION FOR IDENTIFICATION PURPOSES ONLY
ALL MEASUREMENTS AND AREA FIGURES SUPPLIED BY OTHERS, ACCURACY IS NOT GUARANTEED.
THIS PLAN MUST NOT BE REPRODUCED BY ANY OTHER PERSON WITHOUT PERMISSION

- 2 Double Bedroom Apartment
- Private Terrace with Far Reaching Views
- 6th Floor
- Open Plan Living/Kitchen/Dining Room
- 2 Luxury Bathrooms
- 777 sq ft
- 24hr Concierge Service
- Residents Health Suite
- Secure Underground Parking
- Communal Garden with Water Features
- Residents Screening Room and Media Room
- Lease: 992 years remaining
- Council Tax: Band E £3,041.31
- Service Charge: £4,201,30 per annum
- Ground Rent: £425 per annum
- Chain Free