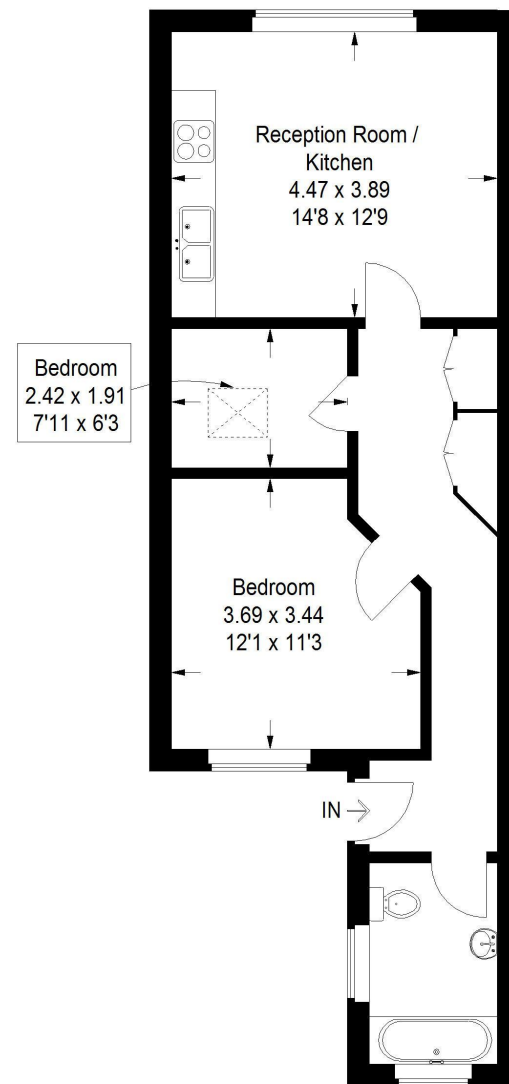


**Teddington - 020 8977 8118**  
35 High Street, Teddington, TW11 8ET

## High Street, Hampton Hill

Approx . Gross Internal Area  
51.3 sq mt / 552 sq ft



### First Floor

Featherstone Leigh Ltd

Every attempt is made to assure accuracy, however measurements are approximate and for illustrative purposes only. (148491)



## High Street, Hampton Hill, TW12

A recently renovated first floor apartment, very close to shops, cafes and pubs on the ever-increasingly popular Hampton Hill High Street. It has two bedrooms, a fantastic contemporary bathroom and an open-plan living space. Externally it also benefits from a good sized private garden which is has just been re-decked with new fencing for added security and privacy. It is in excellent condition and is offered to the market with no onward chain. This is an excellent first time buy and also works very well as a rental investment being that it is ready to move into, so close to amenities and Fulwell Station is within less than half a mile. EPC = F

**Asking Price £285,000 (Leasehold)**

For a full EPC Certificate please visit: <https://www.epcregister.com/searchReport.html> and quote report reference number:

These particulars have been prepared in good faith as a general guide as instructed by our clients. We have not carried out a detailed survey nor tested the services, appliances and specific fittings. Room sizes are approximate and are generally taken as maximum measurements and should not be relied on for fitting of carpets or furnishings. Formal notice is also given that all contents, carpeting, curtains, blinds and appliances are deemed removable by our client unless specifically included within these particulars. All properties are offered subject to contract.

[www.featherstoneleigh.co.uk](http://www.featherstoneleigh.co.uk)

