



Millers Way, Pilgrims Retreat, Harrietsham, Maidstone **£200,000**





YOUR MOVE





Millers Way, Pilgrims Retreat, Harrietsham, Maidstone

£200,000



Epc Exempt
For full EPC please contact the branch

Property Description

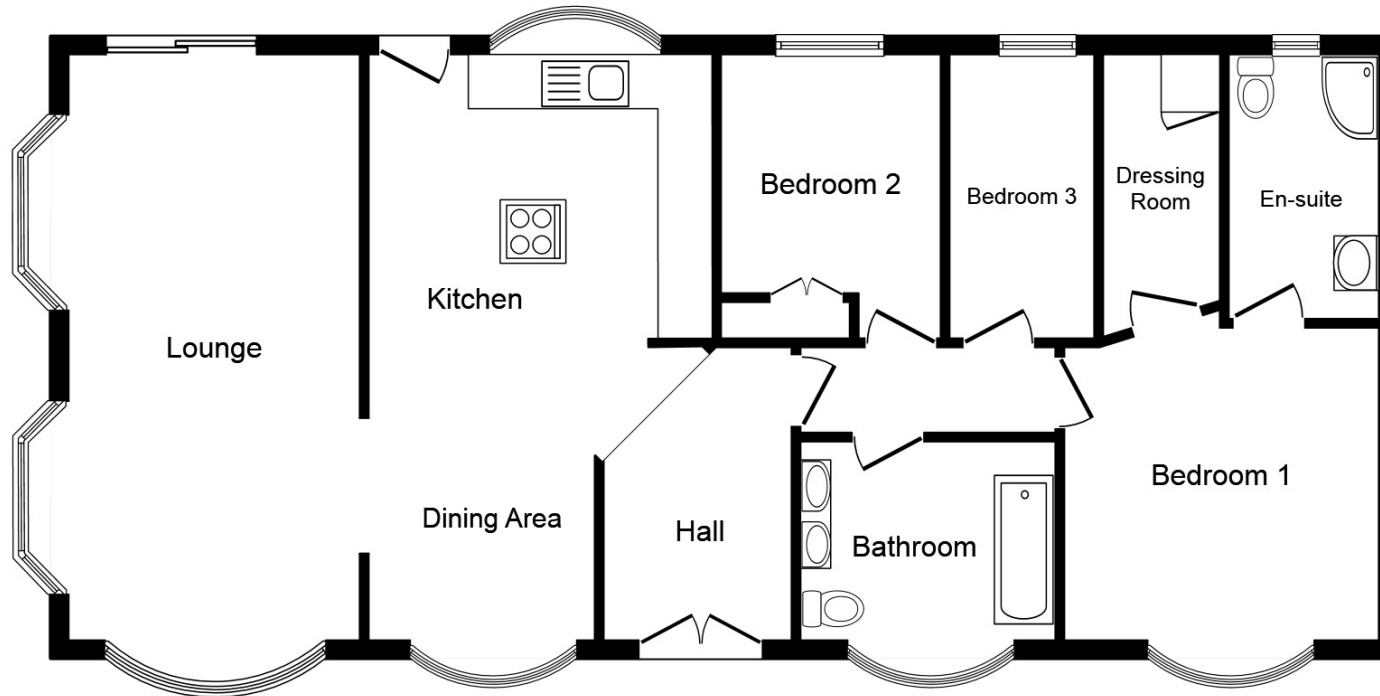
A BEAUTIFULLY PRESENTED DETACHED BUNGALOW/PARK HOME situated in a smart semi rural gated community which is available to the over 50's. This Park Home is offered with a high specification and is situated on the outskirts of this community enjoying far reaching countryside views. The accommodation comprises three bedrooms (master with en-suite and walk-in wardrobe), a triple aspect lounge, well fitted modern kitchen with adjacent dining room, and modern bathroom/wc. The property benefits from calor gas central heating and double glazing. Externally there is a small garden with patio areas and three off road parking spaces. Offered with no forward chain this is an essential viewing. Epc Exempt.

Our View

A particularly splendid example of a beautifully presented and appointed park home. The current owners have commented....we bought our home nearly four years ago with our bespoke internal design and have loved our time in this peaceful setting....the amenities on site and close-by have been a real advantage too.

Location

Pilgrims Retreat is an exclusive park home development in the heart of the Kentish Countryside. The park itself has a variety of local amenities including a club house, restaurant, swimming pool and gym. The village of Harrietsham is close-by offering a number of local amenities including a shop, post office and main rail links with motorway connections also near-by.



Floor Plan

This plan is for illustration purposes only and may not be representative of the property. Plan not to scale.

Powered by audioagent.com

IMPORTANT NOTE TO PURCHASERS: We endeavour to make our sales particulars accurate and reliable, however, they do not constitute or form part of an offer or any contract and none is to be relied upon as statements of representation or fact. The services, systems and appliances listed in this specification have not been tested by us and no guarantee as to their operating ability or efficiency is given. All measurements have been taken as guide to prospective buyers only, and are not precise. Floor plans where included are not to scale and accuracy is not guaranteed. If you require clarification or further information on any points, please contact us, especially if you are travelling some distance to view. Fixtures and fittings other than those mentioned are to be agreed with the seller.

Your Move is a trading name of your-move.co.uk, registered in England at Newcastle House, Albany Court, Newcastle Business Park, Newcastle upon Tyne NE4 7YB (number 01864469).

*Calls may be recorded and/or monitored for training and/or security purposes.

138 Ashford Road, Bearsted, Maidstone, Kent,
ME14 4NA

01622 738282 * Bearsted@your-move.co.uk

