



Kentmere Close, East Kilbride, Glasgow **Offers Over £95,950**





YOUR MOVE





## Kentmere Close, East Kilbride, Glasgow

**Offers Over £95,950**

### Property Description

Semi detached villa ideally situated towards the head of a cul-de-sac within this popular established residential area. The well proportioned accommodation comprises: entrance hallway, lounge through dining room, fitted kitchen, three bedrooms, tiled bathroom with contemporary white suite and shower facility above the bath and there is also a down stairs toilet accessed from the entrance hallway. This home also benefits from gas central heating, double glazing, driveway and private gardens. EPC=C

### Our View

This is a good sized family home.

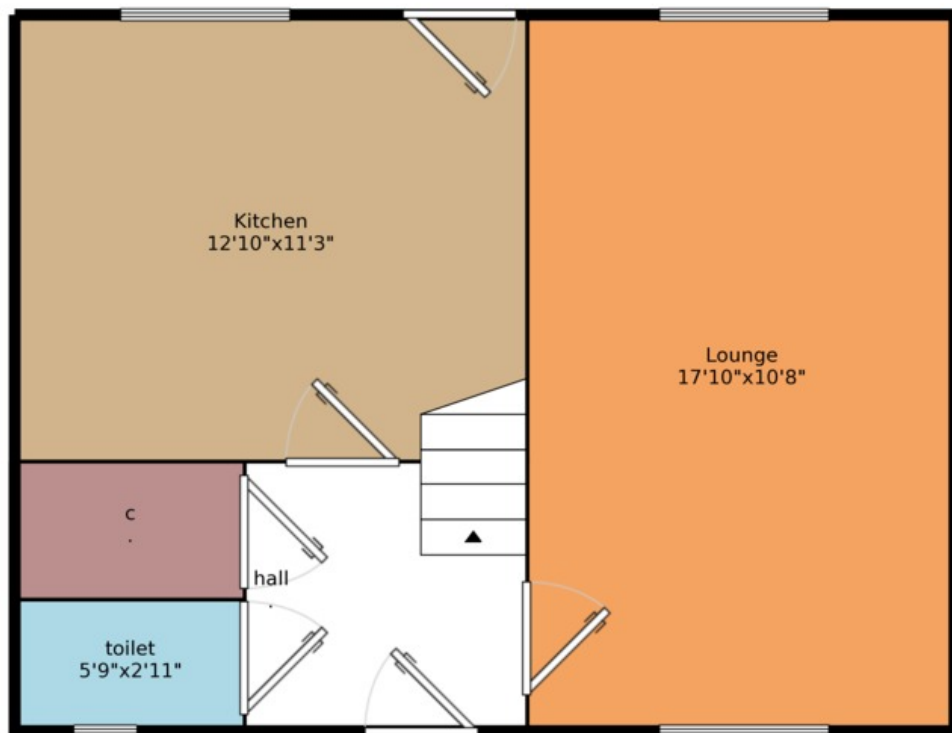
### Location

The sought after town of East Kilbride boasts a wide and varied range of: shopping centres, retail parks, bars, restaurants, nightlife, banks and building societies. Local amenities include: a multiplex cinema, ice rink, arts centre, bowling green, Hairmyres hospital, The Dollan Aqua Centre, several sports centres, golf courses and numerous other recreational facilities. East Kilbride is one of Scotland's largest and newest towns enjoying a central locale with ample bus and rail services and motorway links providing access in and around the central belt.

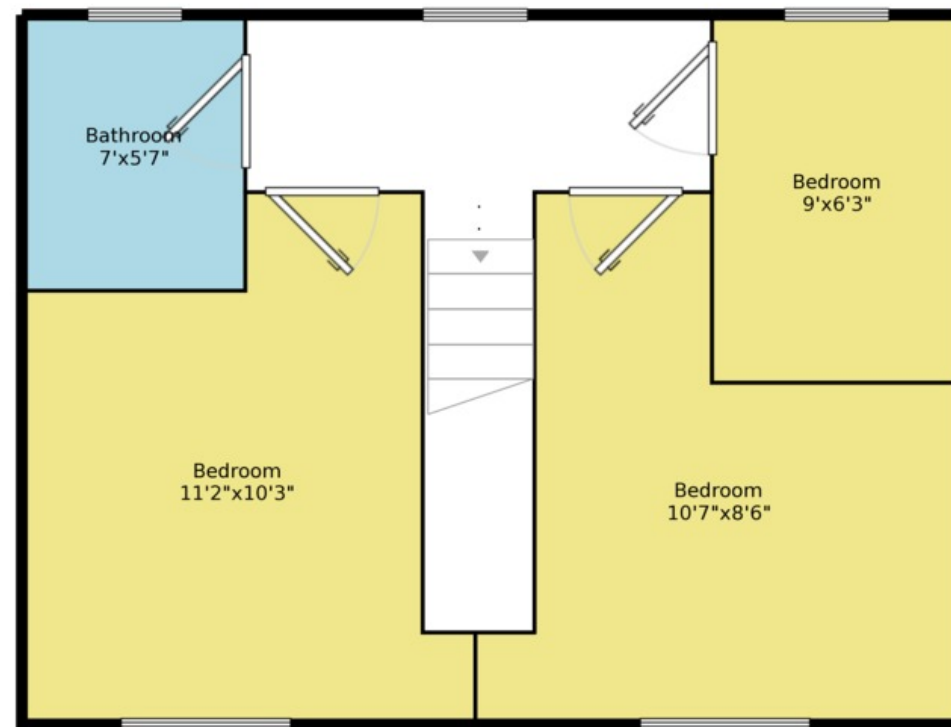


**Semi Detached Villa**  
**For full EPC please contact the branch**

Ground Floor



First Floor



Measurements are approximate. Not to scale. For illustrative purposes only.

IMPORTANT NOTE TO PURCHASERS: We endeavour to make our sales particulars accurate and reliable, however, they do not constitute or form part of an offer or any contract and none is to be relied upon as statements of representation or fact. The services, systems and appliances listed in this specification have not been tested by us and no guarantee as to their operating ability or efficiency is given. All measurements have been taken as guide to prospective buyers only, and are not precise. Floor plans where included are not to scale and accuracy is not guaranteed. If you require clarification or further information on any points, please contact us, especially if you are travelling some distance to view. Fixtures and fittings other than those mentioned are to be agreed with the seller.

Your Move is a trading name of your-move.co.uk, registered in England at Newcastle House, Albany Court, Newcastle Business Park, Newcastle upon Tyne NE4 7YB (number 01864469).

\*Calls may be recorded and/or monitored for training and/or security purposes.

Unit 33 Princess Square, Righead Gate, Town  
Centre East Kilbride, Glasgow, G74 1LS

01355 248133 \* Eastkilbride@your-move.co.uk

