



Hughenden Reach, Tovil, Maidstone, Kent **£46,250**





YOUR MOVE





Hughenden Reach, Tovil, Maidstone, Kent

£46,250

Property Description

NO ONWARD CHAIN! RIVERSIDE LIVING WITH SIT OUT BALCONY - Luxury apartment offering very spacious living accommodation which is accessed via well kept communal areas with lift service and secure video entry system. The apartment comprises of Entrance Hall with built in cupboards, very generous sitting/dining room with open plan kitchen and having access to the sit out balcony with great views. There are two double bedrooms, the master benefiting from en-suite shower room. A modern family bathroom completes the accommodation. The property also benefits from double glazing and GFCH and allocated undercover parking space. A copy of the EPC will be available on request. EPC grade B.

Our View

Shared ownership properties are always very popular (especially when they are as big as this and have such great views) as a great way to get on the market so don't delay and arrange a viewing via our Maidstone office but this little gem gets snapped up.

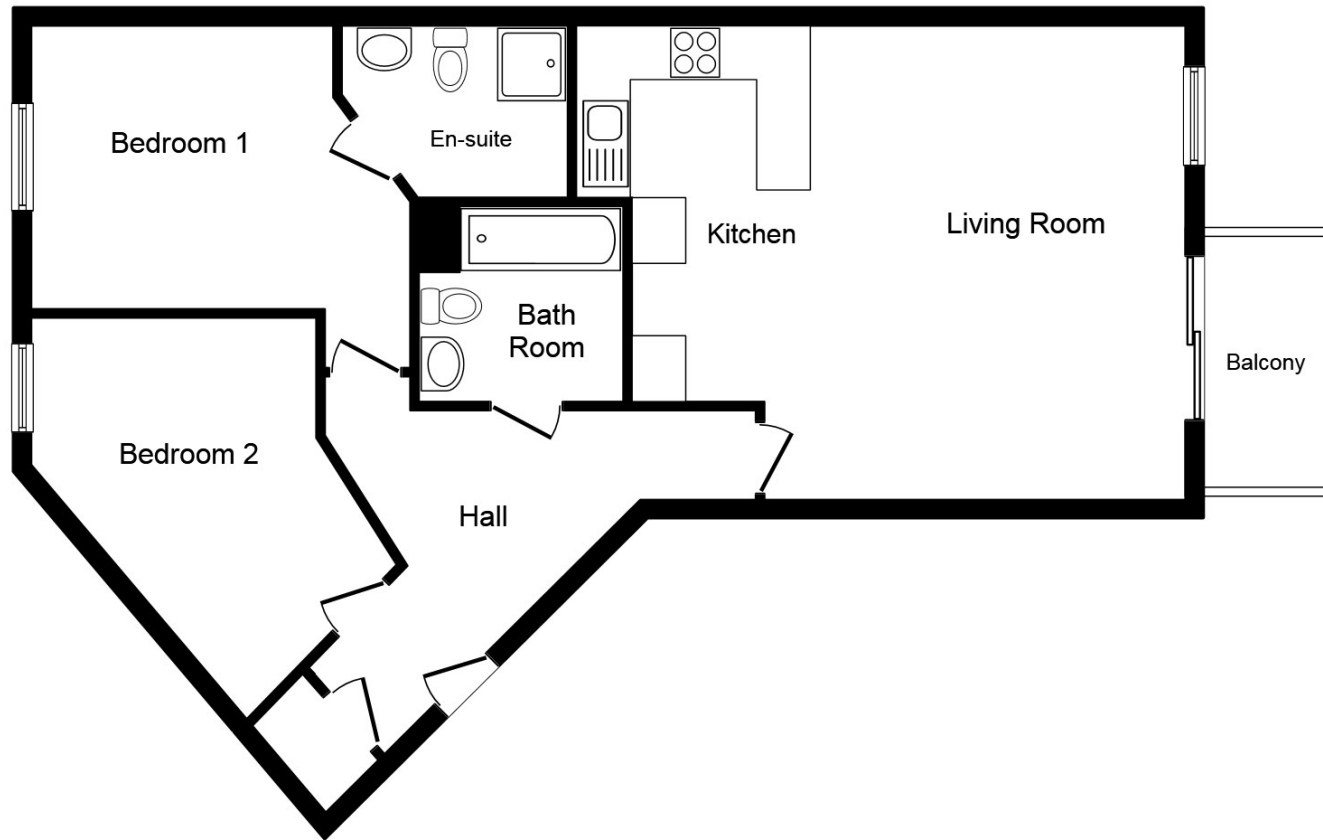
Location

This development is tucked away at end of a quiet residential road along side the river. The property is ideal for town, being just a short walk along the river where you will find a fantastic selection of shops and nightlife as well as two mainline stations to the capital.



EPC Grade B

For full EPC please contact the branch



Floor Plan

This plan is for illustration purposes only and may not be representative of the property. Plan not to scale.

Powered by audioagent.com

IMPORTANT NOTE TO PURCHASERS: We endeavour to make our sales particulars accurate and reliable, however, they do not constitute or form part of an offer or any contract and none is to be relied upon as statements of representation or fact. The services, systems and appliances listed in this specification have not been tested by us and no guarantee as to their operating ability or efficiency is given. All measurements have been taken as guide to prospective buyers only, and are not precise. Floor plans where included are not to scale and accuracy is not guaranteed. If you require clarification or further information on any points, please contact us, especially if you are travelling some distance to view. Fixtures and fittings other than those mentioned are to be agreed with the seller.

Your Move is a trading name of your-move.co.uk, registered in England at Newcastle House, Albany Court, Newcastle Business Park, Newcastle upon Tyne NE4 7YB (number 01864469).

24 King Street, Maidstone, Kent, ME14 1DW

01622 671151 * Maidstone@your-move.co.uk

*Calls may be recorded and/or monitored for training and/or security purposes.

