



Q Investments
International

2 Bedroom Apartment / Flat
Canary Wharf, E14 8RW

£3,510

<https://qinvestments.london>



**You can now reserve your
dream home with us online!**

London, Canary Wharf, E14 8RW

Newly refurbished 2 Bedroom Flat with new furniture interior designed waterside apartment in Canary Wharf.

*Virtual Tour available

For more information, please call or WhatsApp +447985487333.

Ref. RLCA81

Apartment is covering 970 sq. ft in living space and situated on the 8th floor, this modern property is currently furnished and comes with big windows, high ceilings, and ample storage and a private terrace or balcony. Residents further benefit from porter facilities, 24hr security, TV Room and private gated gardens Further features and amenities include:

- Air conditioning
- Great view of the surroundings
- Separate fully fitted kitchen with dishwasher

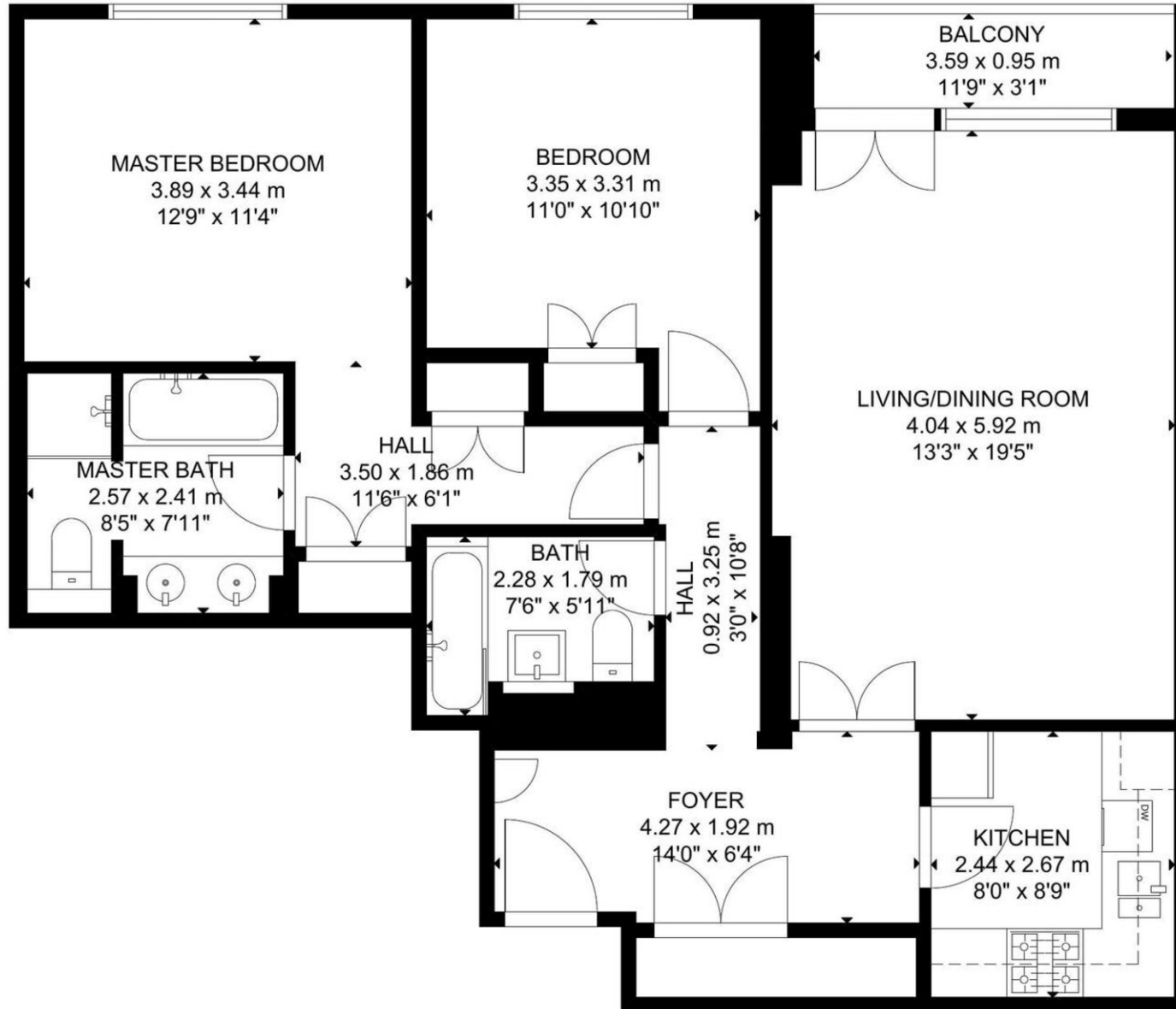
The space boasts floor to ceiling windows that allow in an abundance of natural light, while a private balcony with dramatic views of the impressive Canary Wharf skyline provides a relaxing setting.

A separate fully equipped kitchen with stylish LED under cabinet mood lighting, full-sized fridge/freezers, electric ovens with gas hobs, microwave ovens, external extractors, 1.5 sinks with food waste disposal, dishwashers, and washer dryers, so that you have everything you need from the day you move in.

The flat is student friendly and has a current EPC rating of C. Located on a quiet street, the property is located only moments away from Canary Wharf station, the docklands and many restaurants and amenities.

The apartment is ideally positioned within easy access of Zone 2 stations of Westferry (DLR), Canary Wharf (Jubilee) and Crossrail (Elizabeth line), adding to the extensive transport links including tree lined riverside footpaths, Thames Clipper river service, and local buses.





EIGHTH FLOOR

GROSS INTERNAL AREA
 TOTAL: 90 m²/970 sq ft
 EIGHTH FLOOR: 90 m²/970 sq ft
 EXCLUDED AREA: BALCONY: 3 m²/37 sq ft
 SIZE AND DIMENSIONS ARE APPROXIMATE, ACTUAL MAY VARY.

