

Carlton Street

Cheltenham GL52 6AQ





Carlton Street, Cheltenham GL52 6AQ

This is a truly wonderful Grade II Listed four bedroom town house, with its own self-contained studio apartment. The property is located in a sought after location of Fairview, Cheltenham. The property offers a brilliant flow throughout and would be a stunning family home. The accommodation comprises of; Entrance hall, inner hall, front sitting room full of light, a snug/family room which leads you into the kitchen/diner and lastly there is a handy cloakroom. The kitchen itself has been re-fitted with integrated appliances and overlooks the beautiful garden. Upstairs is accessed via two staircases and benefits from four bedrooms (the main offering a re-fitted shower room), and a separate re-fitted shower room. The rear garden has been superbly landscaped to offer a private retreat. There is also off road parking spaces for at least two cars.

The self-contained apartment has its own entrance and is currently rented out. Here you will find a smart re-fitted kitchen, two alcoves and a shower room. This would be a perfect Airbnb opportunity.

A stunning property which would be worth an internal inspection.

Council Tax Band: D









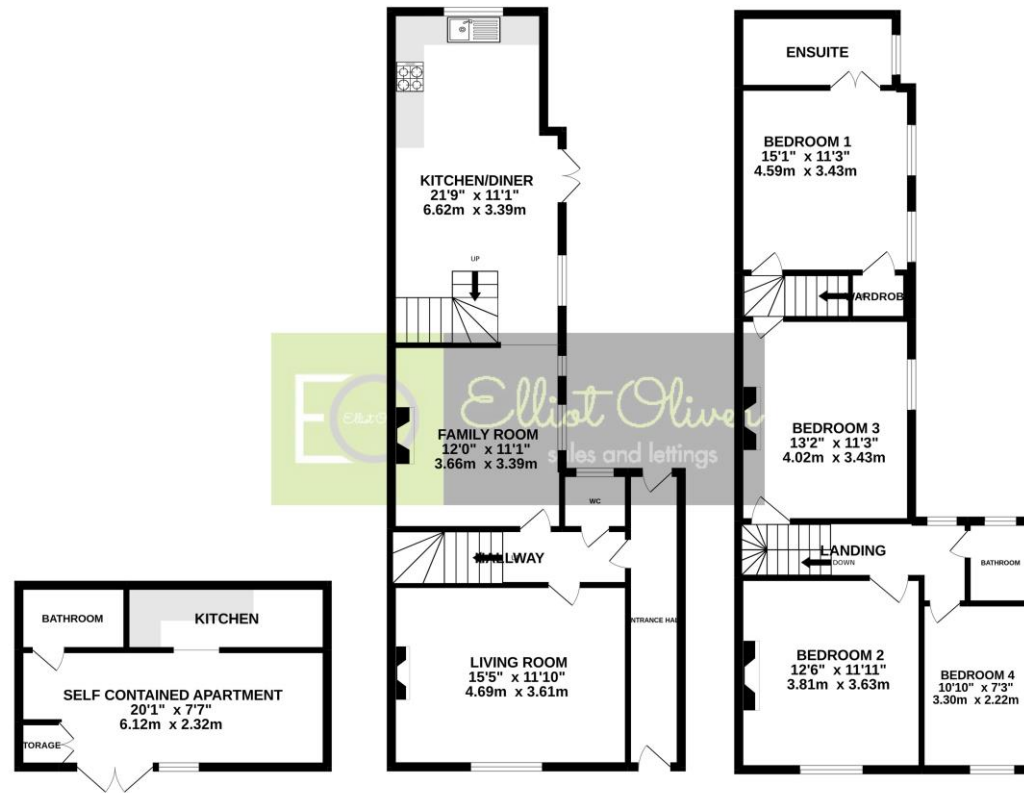




BASEMENT
238 sq.ft. (22.1 sq.m.) approx.

GROUND FLOOR
679 sq.ft. (63.1 sq.m.) approx.

1ST FLOOR
668 sq.ft. (62.1 sq.m.) approx.



TOTAL FLOOR AREA : 2088sq.ft. (194.0 sq.m.) approx.

Whilst every attempt has been made to ensure the accuracy of the floorplan contained here, measurements of doors, windows, rooms and any other items are approximate and no responsibility is taken for any error, omission or mis-statement. This plan is for illustrative purposes only and should be used as such by any prospective purchaser. The services, systems and appliances shown have not been tested and no guarantee as to their operability or efficiency can be given.
Made with Metropix ©2022

Agents Note: Whilst every care has been taken to prepare these sales particulars, they are for guidance purposes only. All measurements are approximate and for general guidance purposes only and whilst every care has been taken to ensure their accuracy, they should not be relied upon and potential buyers are advised to recheck the measurements



OFFICE

101 Promenade,
Cheltenham,
Gloucestershire, GL50
1NW
info@elliotoliver.co.uk