



Lovelace Road
Surbiton, Surrey, KT6 6ND

Guide Price: £300,000

Property Summary

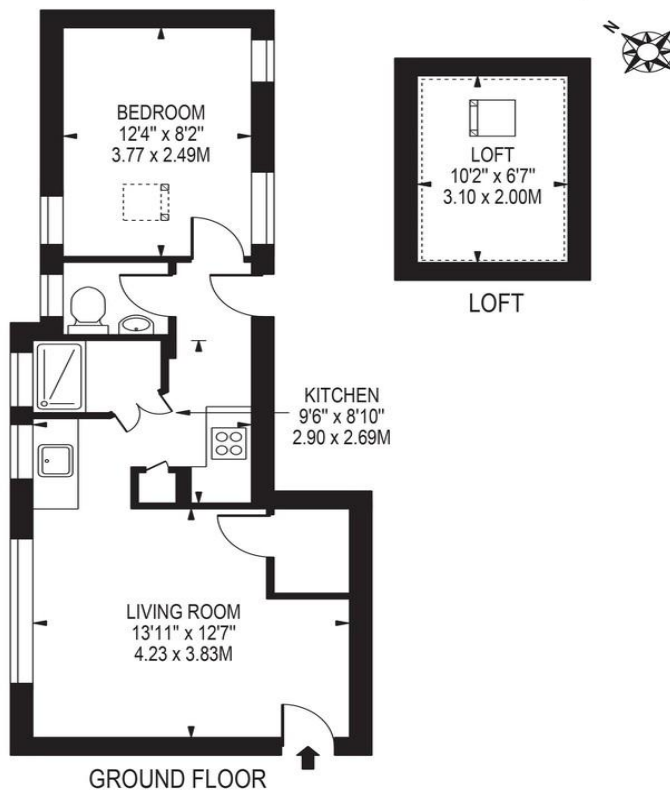
Offered with no onward chain, this ground floor, one bedroom apartment is available on the ever-popular Lovelace Road. Situated just a ten-minute walk from Surbiton Mainline Station and Town Centre, it offers ample living space and access to beautiful communal gardens and maintains lots of the original character features.



LOVELACE ROAD

APPROXIMATE TOTAL INTERNAL FLOOR AREA: 466 SQ FT - 43.28 SQ M
(INCLUDING RESTRICTED HEIGHT AREA)

APPROXIMATE TOTAL INTERNAL FLOOR AREA OF RESTRICTED HEIGHT: 67 SQ FT - 6.20 SQ M



- No chain
- Ground Floor
- Loft storage
- Short walk to Surbiton Mainline Station
- Easy access to Surbiton Town Centre
- Beautiful communal garden

17 Claremont Road
Surbiton
Surrey
KT6 4QR

www.humphreyandbrand.co.uk
02083991888
sales@humphreyandbrand.co.uk

Agents Note: Whilst every care has been taken to prepare these particulars, they are for guidance purposes only. All measurements are approximate and for general guidance purposes only and whilst every care has been taken to ensure their accuracy, they should not be relied upon and potential buyers/tenants are advised to recheck the measurements