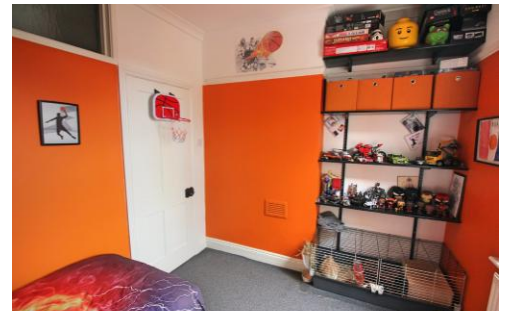




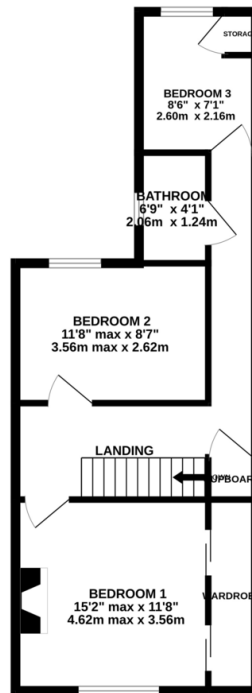
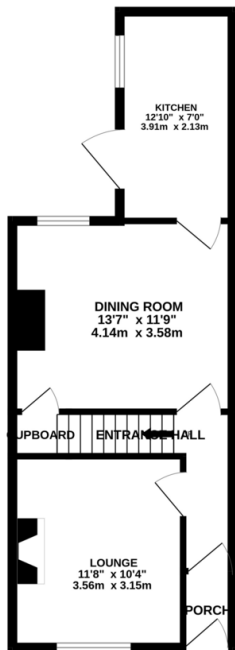
Property Summary

Deceptively spacious and well presented three bedroom mid terrace property for sale in Aylestone. The accommodation comprises porch, entrance hall, lounge, dining room, kitchen, three bedrooms, bathroom and rear garden. This property offers true value for money when it comes to space so get in touch to book your viewing today!

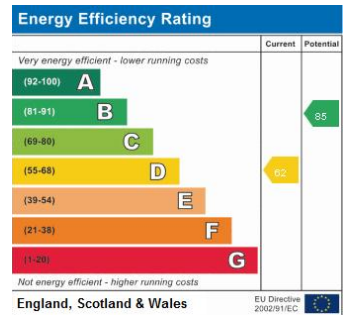


GROUND FLOOR

1ST FLOOR



Whilst every attempt has been made to ensure the accuracy of the floorplans contained herein, measurements of floors, windows, rooms and any other items are approximate and no responsibility is taken for any error, omission or mis-statement. This plan is for illustrative purposes only and should be used as such by any prospective purchaser. The services, systems and appliances shown have not been tested and no guarantee is given to their operability or efficiency can be given.
Made with Metropix ©2023



- Mid Terrace
- Three Bedrooms
- Entrance Hall
- Two Reception Rooms
- Rear Garden
- Well Presented Throughout
- Deceptively Spacious
- On Street Parking

phillips george | sales & lettings

Agents Note: Whilst every care has been taken to prepare these sales particulars, they are for guidance purposes only. All measurements are approximate and for general guidance purposes only and whilst every care has been taken to ensure their accuracy, they should not be relied upon and potential buyers are advised to recheck the measurements

46 Long Street, Wigston, Leicestershire, LE18 2AH

info@phillipsgeorge.co.uk
0116 216 8178

