



5 Bedroom 4 bath Detached House,
Fulmer Rise Lodge, Fulmer Rise, Slough, SL3

<https://qinvestments.london>



Unfurnished 5 Bedroom Detached House to Rent in Fulmer, Slough, Berkshire SL3

- Character features
- Large garden
- Ample driveway parking
- Secluded plot
- Air conditioning
- Separate large kitchen with dishwasher
- Freezer

Fulmer Rise Lodge, Fulmer Rise, Slough, SL3

Unfurnished 5 Bedroom Detached House to Rent in Fulmer, Slough, Berkshire SL3

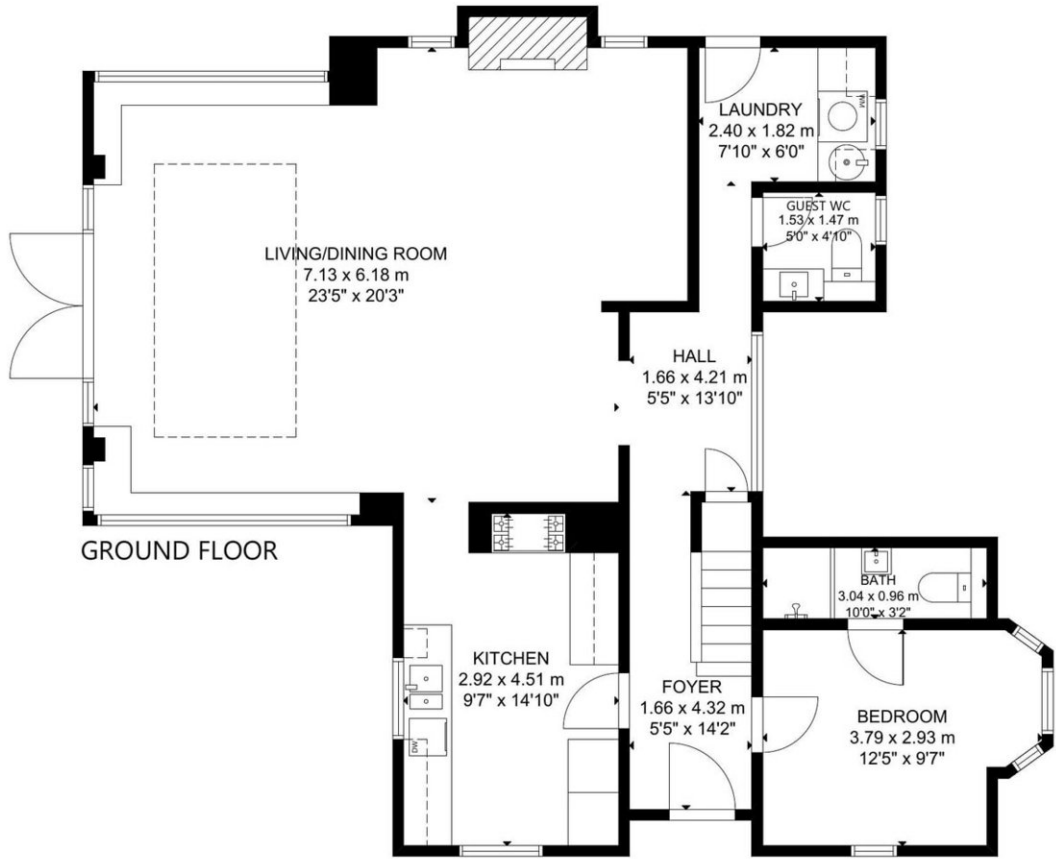
This 5-bedroom detached house located in Fulmer, Slough, Berkshire SL3 is a unique property, available for rent now. Covering 1,854 square feet in living space, the property is currently unfurnished but benefits from big windows and ample storage. Situated in a tranquil location, the gated property boasts a sunroof in the living room leading to a vast private garden with a shed and a driveway, providing ample space for parking.

The property is ideally located in the Buckinghamshire countryside, offering a unique blend of tranquility and convenience. The house is within easy reach of essential shops, leading schools, village restaurants, and traditional country family cafes. Slough, Windsor, Ascot, and the surrounding Buckinghamshire villages provide social distractions and enjoyable days out, further enhancing the property's appeal.

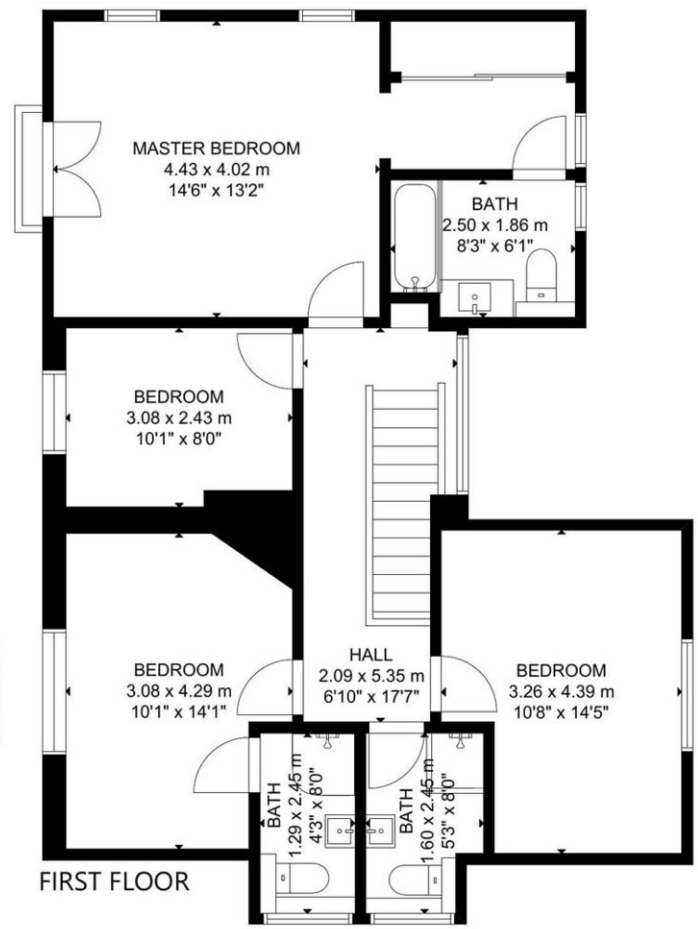
The mainline train stations are a short drive away, offering a direct line to the Metropolitan/Piccadilly tube network, providing easy access to Central London. The charming property in leafy surrounds offers a plethora of attractions, making it an ideal choice for those seeking a unique living experience.

The house is under the Council Tax band G, providing an indication of the property's value and location.

In summary, this 5-bedroom detached house located in Fulmer, Slough, Berkshire SL3 offers a unique living experience in a tranquil location with easy access to essential amenities, leading schools, and social distractions. The property's vast private garden, ample storage, and gated driveway make it an ideal choice for families seeking a spacious and secure living environment.

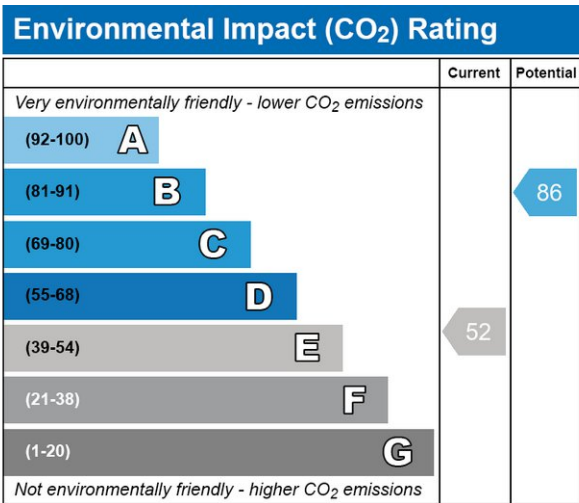
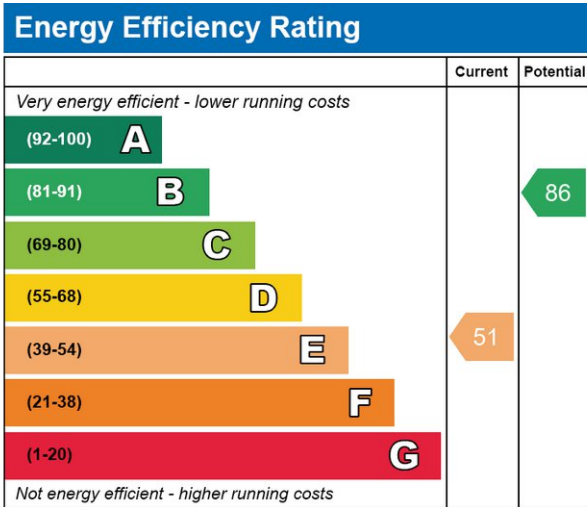


GROUND FLOOR



FIRST FLOOR

GROSS INTERNAL AREA
 TOTAL: 179 m²/1,922 sq ft
 GROUND FLOOR: 96 m²/1,032 sq ft, FIRST FLOOR: 83 m²/890 sq ft
 SIZE AND DIMENSIONS ARE APPROXIMATE, ACTUAL MAY VARY.



CONTACT US

Have a question for us? Please get in touch.

Q INVESTMENTS INTERNATIONAL LTD

T: +44 (0) 7985 487333

E: office@qinvestments.london

INVESTMENTS, REAL ESTATE & LIFESTYLE

Stay connected

Please visit our social media pages.

You can now find us on [Facebook](#), [Twitter](#), [Linkedin](#) and [Instagram](#) and many more!