

## Why use S J Smith Estate Agents? Here's some of our reviews to tell you why!

**Hours:** 8am–7pm Monday to Friday, 8am-5pm Saturday and 10am-2pm Sunday.  
**Phone:** Ashford 01784 243 333 – Staines 01784 779 100  
**Email:** [ashford@sjsmithestateagents.co.uk](mailto:ashford@sjsmithestateagents.co.uk) - [staines@sjsmithestateagents.co.uk](mailto:staines@sjsmithestateagents.co.uk)



### **Sajid Abbasi**

I have used SJSmith Estate agents for last 7 years, both as buyer and landlord. They always come across as professional, courteous, and understanding to customer's needs. I continue to use their services and have no complaints.



### **Abigail P**

Our overall experience with s j smith has been great. Everyone we have dealt with has been brilliant and can't thank you enough especially Nicola who has kept us updated and constantly chased the chain for us after a difficult chain and original one falling through. Thank you!!



### **Robert Boyce**

Great service from Amir and the team! We tried to sell through an online agent with no success.... We signed up with SJSmith and then 3 days later we had an offer!  
Highly recommend!



### **Lincoln Williamson**

My partner and I recently bought our first home from S J Smith and from start to finish they were excellent. From arranging a viewing, to keeping us updated throughout the whole process and being able to answer all our questions and queries in a very timely manner. There was a number of difficulties with the sale, however Nicola went above and beyond in helping these difficulties get resolved, keep us in the loop, offer support and guidance and ensure that the sale happened as quick as possible. If not for Nicola, I honestly don't think the sale would have gone ahead! Thank-you Nicola and thank you S J Smith!



### **Katie Jameson**

Great service, kept up to date throughout the whole process as the first time selling a home.



### **Louise Cambray**

We bought and sold through SJ Smith and can't recommend them enough. Everyone at the office is great but we knew we were in safe hands with Louis from the off. He was so knowledgeable and took the time to listen to what was important to us. He was always available to talk things through and help solve any issues. Nothing was ever too much trouble, and he continually went over and above - genuinely a really nice guy! Nicola was also amazing, so efficient and made what was a very difficult process as painless as possible. We are very grateful to both of them for all of their help!



6 Station Approach  
Ashford  
Middlesex  
TW15 2QN

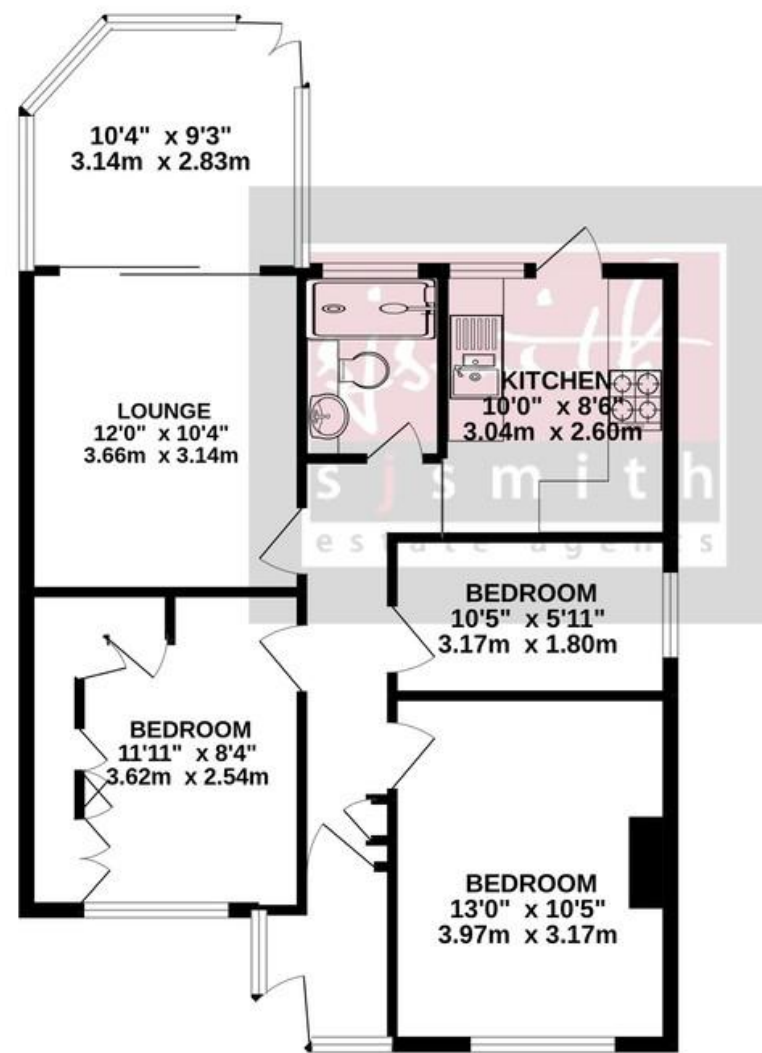
t: 01784 243333  
e: [ashford@sjsmithestateagents.co.uk](mailto:ashford@sjsmithestateagents.co.uk)  
[www.sjsmithestateagents.co.uk](http://www.sjsmithestateagents.co.uk)



**289 Kingston Road, Ashford, TW15 3SJ**  
**Guide Price £459,950 - Freehold**

This wonderful three bedroom semi detached bungalow comes to the market with no onward chain and is situated on an excellent sized corner plot which provides excellent cope for further development if required (stpp). The property benefits from a large front garden which could be altered into additional parking in the future if required (subject to usual approvals) and has an entrance porch which leads into the hallway with accommodation consisting of: two double bedrooms to the front aspect, one with a range of fitted wardrobes, a third single bedroom, a modern shower room, living room with access to a Conservatory and a modern fully fitted kitchen. The property is gas centrally heated and has a large loft space and to the rear it enjoys a 70ft mature rear garden and also benefits from a detached garage with a gated driveway for access. Ideally situated just a mile from Ashford train station and Ashford town centre and within easy access of Fordbridge Park and local Schools.

GROUND FLOOR  
876 sq.ft. (81.4 sq.m.) approx.



TOTAL FLOOR AREA : 876 sq.ft. (81.4 sq.m.) approx.

Whilst every attempt has been made to ensure the accuracy of the floorplan contained here, measurements of doors, windows, rooms and any other items are approximate and no responsibility is taken for any error, omission or mis-statement. This plan is for illustrative purposes only and should be used as such by any prospective purchaser. The services, systems and appliances shown have not been tested and no guarantee as to their operability or efficiency can be given.  
Made with Metropix ©2022

- NO CHAIN
- CORNER PLOT
- GREAT SCOPE TO EXTEND (STPP)

- MODERN KITCHEN AND SHOWER ROOM
- 70FT REAR GARDEN
- EPC RATING D



### Council Tax

Spelthorne Borough Council, Tax Band D being £2,132.01 for 2022/23

Council tax bands can be reassessed by local authorities at any point, the council tax band is only taken at point of listing and should not be relied on as current banding

**Agent note** Under Consumer Protection Regulations we have endeavoured to make these details as reliable and as accurate as possible. The accuracy is not guaranteed and does not form part of any contract as the details are prepared as a general guide. We have not carried out a detailed survey or tested any appliances, specific fittings, or services (gas/electric). Room sizes should not be relied upon for carpets or furnishing nor should internal photos as these are intended as a guide only and may have changed since. It should not be assumed that any furniture/fittings are included. Lease, ground rent, maintenance or any other charges have been provided by the vendor and their accuracy cannot be guaranteed. We always advise a buyer should obtain verification on points via a solicitor.