



Matthew James

St James House | St James Road | Surbiton | Surrey KT6 4QH

T: +44 (0) 20 8390 2266

E: enquiries@matthewjamesestateagents.co.uk

www.matthewjamesestateagents.co.uk



Chaffinch Close, Surbiton, KT6 7PG

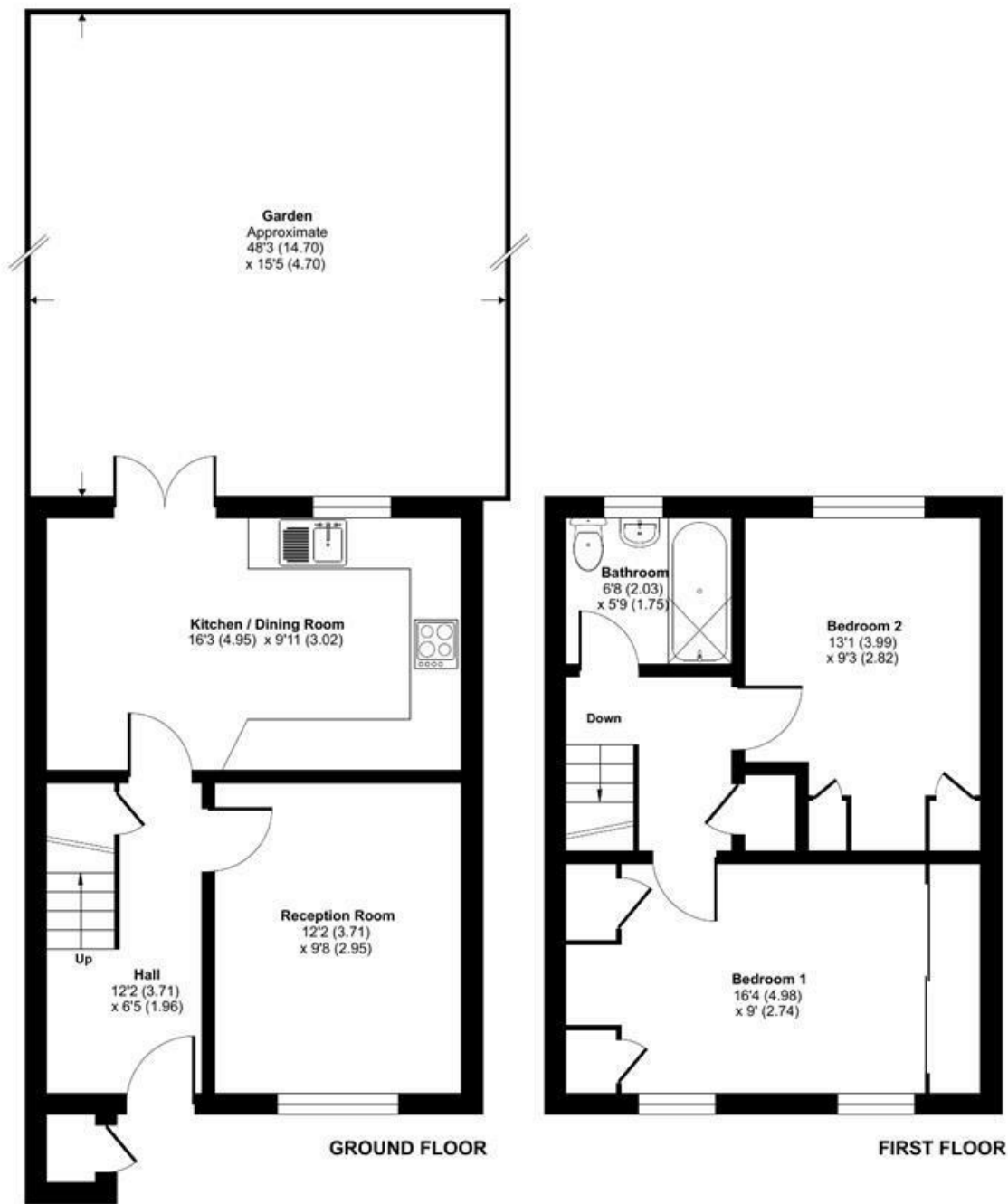
An excellent, two double bedroom modern house with a beautiful private garden and driveway parking presented in excellent condition. Located within a mile of Tolworth station and the local shops and amenities of Tolworth Broadway. The many benefits include a modern fitted kitchen dining room with French doors opening onto the garden. A separate front sitting room and a welcoming entrance hallway. On the first floor a large main bedroom with fitted wardrobes and a double second bedroom. There is also a modern white bathroom suite with a shower over the bath. Gas central heating and double glazing. There is a beautiful well planted private garden to the rear and driveway parking for two cars at the front of the property. A lovely home. Council tax band D.

Guide Price £409,950 Freehold

EPC Rating: D

Chaffinch Close, Surbiton, KT6

Approximate Area = 734 sq ft / 68 sq m
Outbuilding = 5 sq ft / 0.5 sq m
Total = 739 sq ft / 69 sq m
For identification only - Not to scale



Floor plan produced in accordance with RICS Property Measurement Standards incorporating International Property Measurement Standards (IPMS2 Residential). © nichecom 2022. Produced for Matthew James. REF: 895899

We aim to make our property details a reliable guide. However they are not guaranteed and do not form part of a contract. Information in relation to lease length, service charge and ground rent has been provided by the vendor, they are likely to be subject to reviews and increases in the future and will need to be verified by your legal representative. Please note that appliances and heating systems have not been tested and therefore no warranty can be given as to their good working order. Carpets, curtains, gas fires, electrical goods/fitings and other fixtures, unless expressly mentioned, are not included in the sale of this property. If there are any important matters which are likely to affect your decision to buy, please contact our office.

