



Maxworthy Row, Blaenavon

£90,000

- Offered with no onward chain
- Ideal refurbishment project
- Located in the popular heritage town of Blaenavon
- Great access to surrounding countryside within walking distance of the town centre
- Two bedrooms
- Kitchen with space for breakfast table

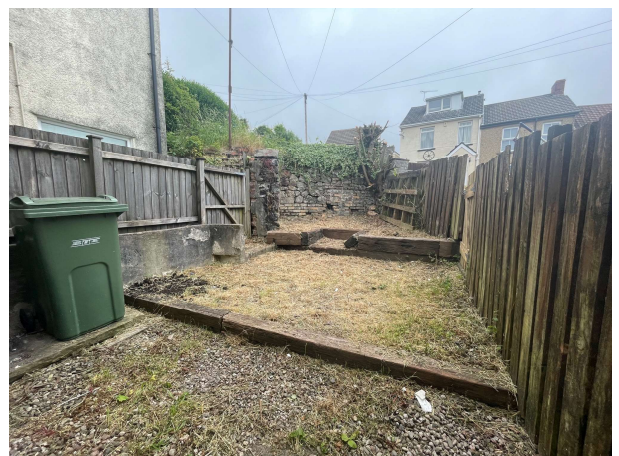


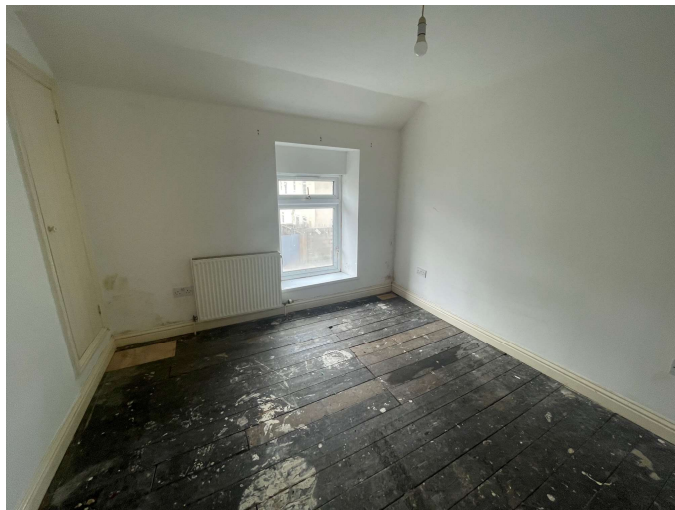
 2  1  1



About the property

Offered with no onward chain and within walking distance of the town centre, this is an ideal refurbishment project for someone.





Accommodation

Living Room

13' 8" max x 12' 7" max (4.17m max x 3.84m max)
 Front facing window, ceiling light, radiator, stairs to the first floor, door to kitchen.

Kitchen

7' 4" x 12' 7" (2.24m x 3.84m)
 Rear facing window, ceiling light, fitted kitchen with a range of eye level and floor mounted units with work surface over, sink drainer, space for appliances, door to garden.

First Floor Landing

Ceiling light, doors to;

Bedroom One

9' 9" x 10' 4" (2.97m x 3.15m)
 Front facing window, ceiling light, radiator, over stairs storage cupboard.

Bedroom Two

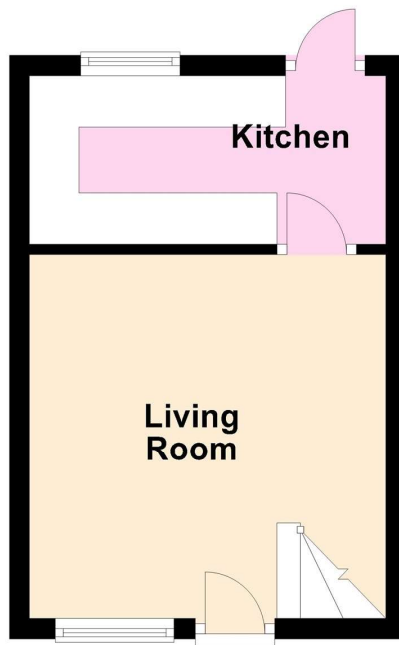
7' 7" min x 10' 7" (2.31 m min x 3.23m)
 Rear facing window, ceiling light, radiator.

Outside

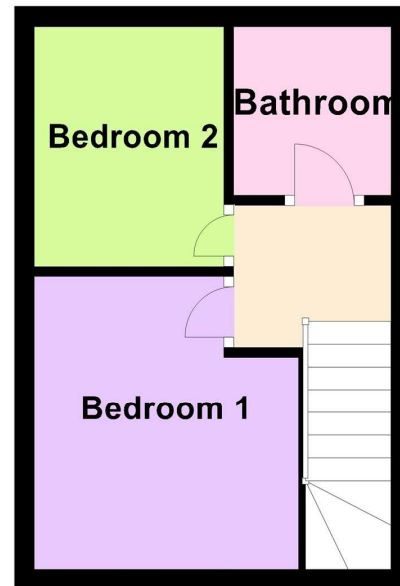
There is a small rear garden with access to a communal green.

Floorplan

Ground Floor



First Floor



this plan is for representation purposes only
Plan produced using PlanUp.

Important Information

Note while we endeavour to make our sales details accurate and reliable, if there is any point which is of particular interest to you, please contact the office and we will be pleased to confirm the position for you. We have not personally tested any apparatus, equipment, fixtures, fittings or services and cannot verify they are in working order or fit for their purposes. Nothing in these particulars is intended to indicate that carpets or curtains, furnishings or fittings, electrical goods (whether wired or not), Gas fires or light fittings or any other fixtures not expressly included form part of the property offered for sale. This computer generated Floorplan, if applicable, is intended as a general guide to the layout and design of the property. It is not to scale and should not be relied upon for dimensions. Tenure: We cannot confirm the tenure of the property as we have not had access to the legal documents. The buyer is advised to obtain verification from their solicitor or surveyor.

Peter Alan Limited is registered in England and Wales under company number 2073153, Registered Office is Cumbria House, 16-20 Hockliffe Street, Leighton Buzzard, Bedfordshire, LU7 1GN. VAT Registration Number is 500 2481 05. For activities relating to regulated mortgages and non-investment insurance contracts, Peter Alan Limited is an appointed representative of Connells Limited which is authorised and regulated by the Financial Conduct Authority. Connells Limited's Financial Services Register number is 302221. Most buy-to-let