








Seymours



Baileys Close Camberley, GU17 0AT £375,000

Arrange a viewing: 01276 534100

Property Details

-  3 bedrooms
-  1 baths
-  EPC Rating TBC
-  1230 sqft (including garage)
-  Blackwater Station (1.4 miles)

- Three Bedrooms
- Off Street Parking
- Integral Garage
- Private/ Low Maintenance Rear Garden
- Two Reception Rooms
- Modern Bathroom
- Conservatory
- Walking distance to local schools & shops
- No Onward Chain

****NO ONWARD CHAIN**** A well proportioned three bedroom family home, situated within a popular close in Blackwater. The property benefits from block paved off street parking, two reception rooms, generous integral garage, ample kitchen with the addition of a large conservatory which leads onto a private & low maintenance garden. Upstairs consists of three spacious bedrooms and a modern tiled bathroom. Another plus point is the property's close proximity to good local schools, shops and Yateley Common.

[01276 534100](tel:01276534100) / james@seymours-blackwater.co.uk

Baileys Close

Approximate Gross Internal Area = 114.3 sq m / 1230 sq ft
(Including Garage)

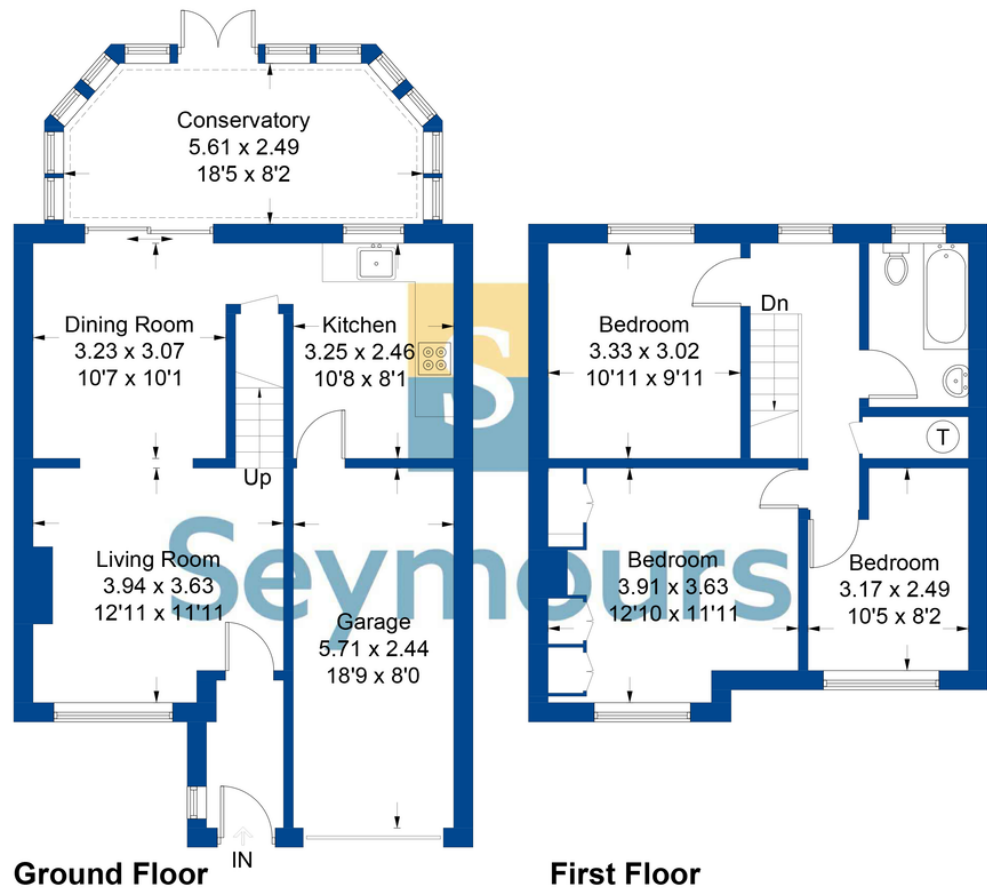
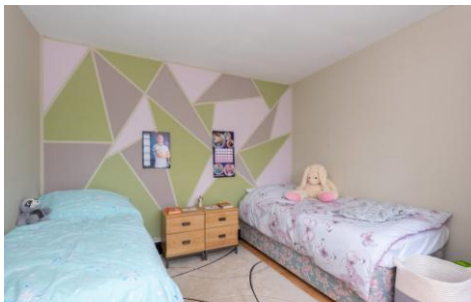


Illustration for identification purposes only, measurements are approximate, not to scale. FloorplansUsketch.com © 2022 (ID915483)