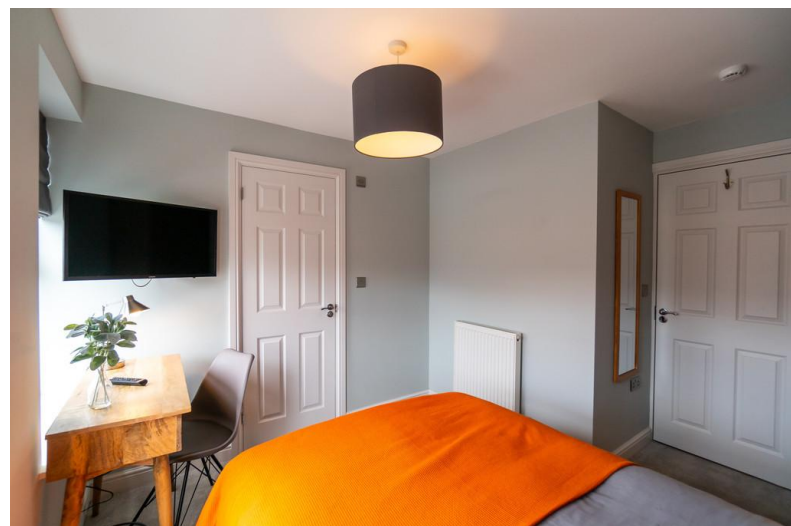
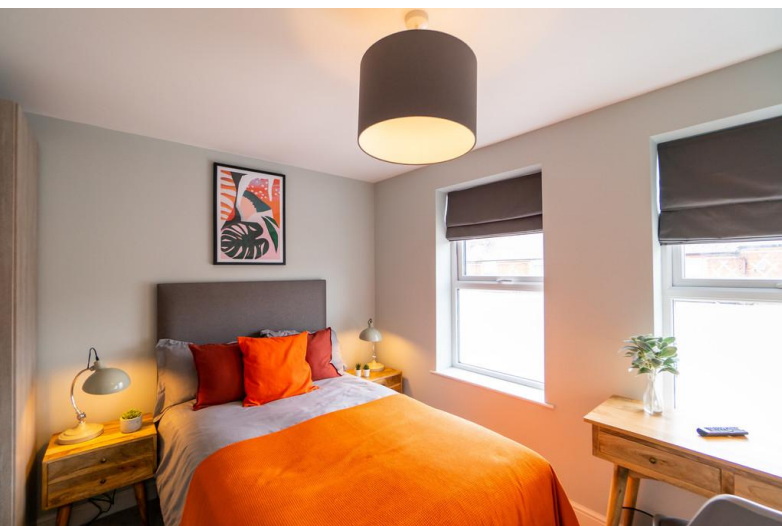


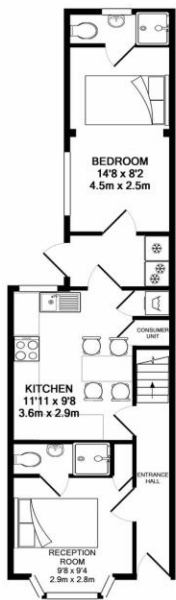


24 Washington Road
Caversham, Reading, RG4 5AA

- Double en-suite room
- Shared house with shared facilities
- Fully furnished throughout
- All bills included + Wi-Fi

£750 pcm
EPC Rating '66'

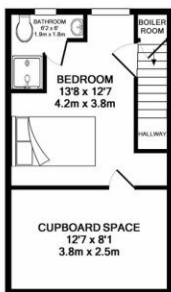




GROUND FLOOR
APPROX. FLOOR
AREA 466 SQ.FT.
(43.3 SQ.M.)



1ST FLOOR
APPROX. FLOOR
AREA 380 SQ.FT.
(35.3 SQ.M.)



LOFT BEDROOM
APPROX. FLOOR
AREA 275 SQ.FT.
(25.5 SQ.M.)

TOTAL APPROX. FLOOR AREA 1121 SQ.FT. (104.1 SQ.M.)
Whilst every attempt has been made to ensure the accuracy of the floor plan contained here, measurements of doors, windows, rooms and any other items are approximate and no responsibility is taken for any error, omission, or mis-statement. This plan is for illustrative purposes only and should be used as such by any prospective purchaser. The services, systems and appliances shown have not been tested and no guarantee as to their operability or efficiency can be given.
Made with Metropix ©2019



Zoopla
Smarter property search

PrimeLocation
Find the home you deserve

SPAREROOM.co.uk

PRS Property Redress Scheme

mydeposits.co.uk

CMP
Client Money Protect

Eastley House
Brightwalton
Newbury
Berkshire
RG20 7DE

www.pillar.properties
hello@pillar.properties
07468529075

Agents Note: Whilst every care has been taken to prepare these sales particulars, they are for guidance purposes only. All measurements are approximate are for general guidance purposes only and whilst every care has been taken to ensure their accuracy, they should not be relied upon and potential buyers are advised to recheck the measurements