

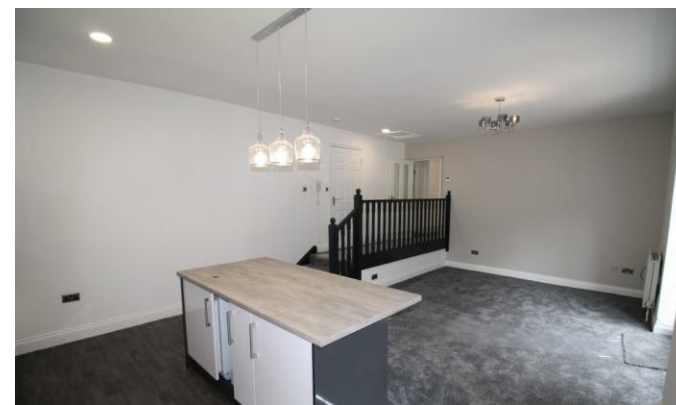


6 Dame Margaret Hall

Washington Village
Washington
NE38 7BF

£1,100 pcm

Two Bedrooms
Upper Floor Apartment
Immaculate, Spacious and Modern
Secured Gated Community
Refurbished Throughout
Early Viewing Highly Recommended
Available Late May 2024!





Safe and Secure are delighted to welcome to the market this Two Bedroom Upper Floor Apartment in the PRESTIGIOUS Dame Margaret Hall, Washington Village.

This FULLY REFURBISHED home is open plan living at its best! Complete with its own private ROOF TOP TERRACE this property needs to be seen to be appreciated.

COMMUNAL ENTRANCE

Entrance door, stairs up to apartment.

OPEN PLAN KITCHEN AND LOUNGE

23' 9" x 15' 3" (7.25m x 4.67m) Impressive open plan living area fitted with a modern range of wall and base units with co-ordinating work surfaces over, 1 1/2 bowl sink unit, integrated electric oven and gas hob with extractor hood over, centre island with integrated fridge and freezer beneath, integrated dishwasher, washing machine ,security entry system and double glazed French doors to private roof terrace.

INNER HALLWAY

Double glazed window to front, built in storage cupboard and radiator.

MASTER BEDROOM

13' 5" x 11' 4" (4.10m x 3.47m) Double glazed window to rear, double glazed French doors to private roof terrace, built in storage cupboard and radiator.



BEDROOM 2

9' 1" x 9' 8" (2.77m x 2.97m) Double glazed window to front and radiator.

BATHROOM

White three piece suite comprising of panelled bath with shower over, vanity unit wash basin, low level WC, heated towel rail, porcelain wall and floor tiles.

COMMUNAL GARDENS

The hall is surrounding by beautifully maintained communal gardens and there is off street parking via the security gate entry system



Local Authority
Council Tax Band
EPC Rating

C



Houghton le Spring
24-25 Westbourne Terrace
Houghton Le Spring
Tyne And Wear
DH4 4QT

Contact
0191 3854477
info@safeandsecureproperties.c
o.uk
safeandsecureproperties.co.uk

Agents Note: Whilst every care has been taken to prepare these particulars, they are for guidance purposes only. All measurements are approximate and are for general guidance purposes only and whilst every care has been taken to ensure their accuracy, they should not be relied upon and potential buyers/tenants are advised to recheck the measurements.