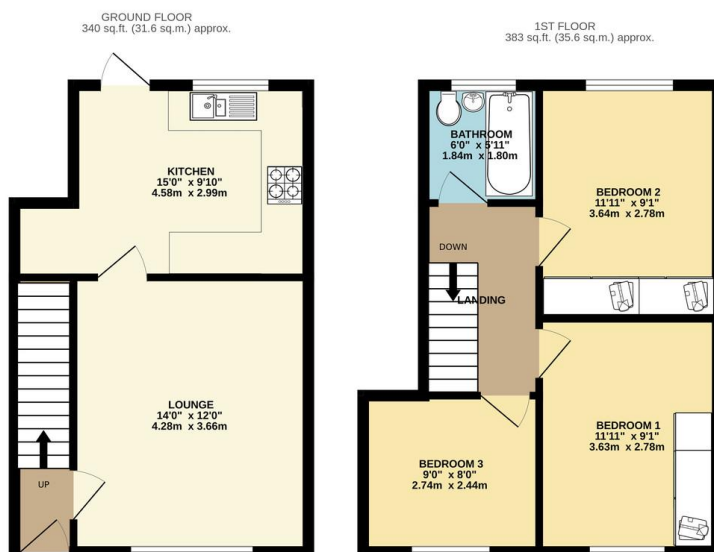




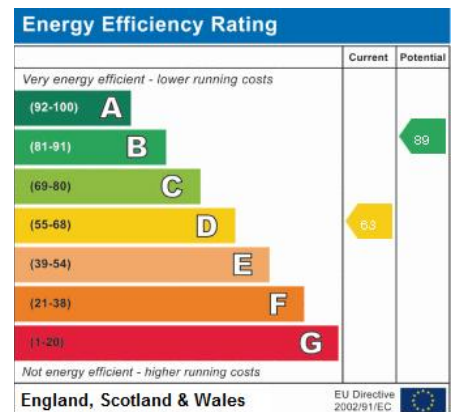
FOR SALE

3 Bed Mid Terraced House in Saffron Lane, Leicester LE2 7ND
£210,000

This well presented three bedroom mid terrace is pleasantly situated on a quiet side road and located in the highly popular location of Leicester, LE2. The accommodation comprises main entrance hall lounge, kitchen landing to three double bedrooms and a bathroom rear private gardens and quiet on street parking. Viewing comes highly recommended.



TOTAL FLOOR AREA: 723 sq.ft. (67.1 sq.m.) approx.
Whilst every attempt has been made to ensure the accuracy of the floorplan contained here, measurements of doors, windows, rooms and any other items are approximate and no responsibility is taken for any error, omission or mis-statement. This plan is for illustrative purposes only and should be used as such by any prospective purchaser. The services, systems and appliances shown have not been tested and no guarantee as to their operability or efficiency can be given.
Made with Metropix ©2023



- Mid Terrace
- Three Bedrooms
- Highly Sought After Location
- Quiet Side Road
- Well Presented Throughout
- Private Rear Garden
- On Street Parking
- Fitted Kitchen

Agents Note: Whilst every care has been taken to prepare these sales particulars, they are for guidance purposes only. All measurements are approximate are for general guidance purposes only and whilst every care has been taken to ensure their accuracy, they should not be relied upon and potential buyers are advised to recheck the measurements.

