



- THREE BEDROOM TERRACED HOUSE
- TOWN CENTRE
- KITCHEN/BREAKFAST ROOM
- UTILITY ROOM

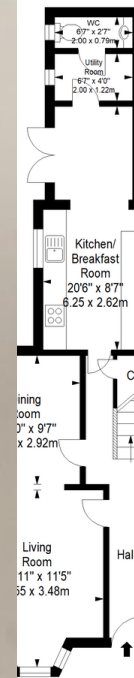
28 Graham Road , Worthing, BN11 1TL

Guide Price £375,000

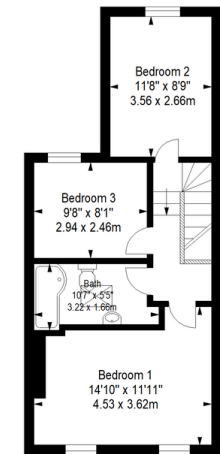
W Welch Estate Agents are delighted to present to the open market this three bedroom mid terrace house located in the heart of WORTHING town centre. The property would make a great starter home or buy to let investment, currently rented out at £1500pcm. The property comprises entrance hall leading to good size lounge/diner. Extended kitchen/breakfast room with plenty of space, separate utility area with door leading to downstairs w.c. From the kitchen there are patio doors leading to an outside space. The first floor has two good sized double bedrooms and a small double, family bathroom with shower over bath. GSC. For more information, please call Tel: 01903 898000



Ground Floor



First Floor



Approximate gross internal floor area 96.3 sq m/ 1036.6 sq ft

Whilst every care has been taken to ensure accuracy, dimensions are approximate and for illustrative purposes only. All rights reserved.



3 Marston Road, Worthing, West
Sussex, BN14 8BD

www.w-welchestateagents.co.uk
01903 898000
sales@w-welchestateagents.co.uk

Agents Note: Whilst every care has been taken to prepare these particulars, they are for guidance purposes only. All measurements are approximate and for general guidance purposes only and whilst every care has been taken to ensure their accuracy, they should not be relied upon and potential buyers/tenants are advised to recheck the measurements