



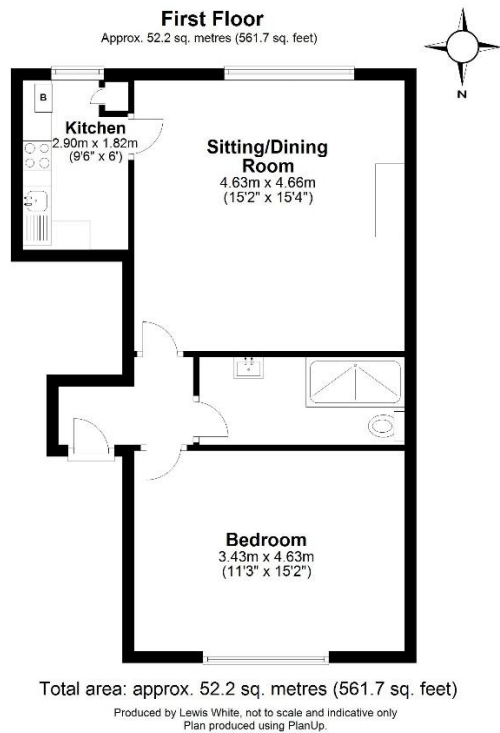
SPACIOUS 1ST FLOOR, 2 BEDROOM APARTMENT

Flat2, 32 Somers Road, Reigate, RH2 9DZ
£285,000

This charming first floor 1 bedroom apartment offers a spacious double bedroom with a fabulous outlook over the mature residents garden, a fully fitted kitchen complete with modern appliances, and a stylish bathroom featuring a walk-in shower. The expansive sitting room boasts a striking ornamental fireplace, perfect for relaxing or entertaining. Enjoy the comfort of gas central heating throughout. The property is set within stunning communal grounds, just a short stroll from local shops and Reigate train station. With an allocated parking space, a 900+ year lease, and no onward chain, this is an opportunity not to be missed. EPC C, Council Tax Band D. in Reigate with this exceptional property. Please note the photos are taken prior to existing tenants occupation. The property can be purchased vacant or as a buy to let investment.



lewis
white



900+ year lease, maintenance charge of £1,536 per annum and £100 ground rent p/a. Council tax D, EPC C.