








Seymours



Gale Close  
Yateley, GU46 7AT  
£500,000

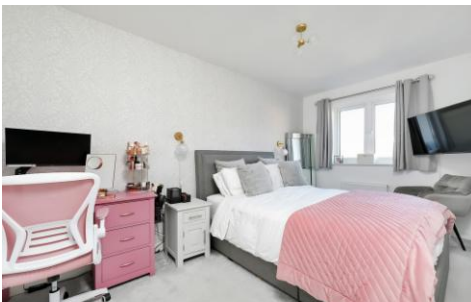
Arrange a viewing: 01276 534100

## Property Details

-  3 bedrooms
-  2 baths
-  EPC Rating TBC
-  1,134 sq ft
-  Sandhurst Station (1.5 miles)
  - Overlooking Greenery & Pond
  - 3 Double Bedrooms
  - Ensuite to master bedroom
  - Cloakroom
  - Garage
  - Driveway Parking
  - High-quality finishes throughout
  - 4.5 year NHBC warranty
  - Closed Chain Above

A beautifully appointed and well presented spacious semi-detached family home which benefits from a generously sized master bedroom with En suite. There are also two further double bedrooms and a modern family bathroom. To the ground floor there is a beautiful kitchen as well as a large Living room. To the rear of the property is a private garden that offers side access from the driveway. The property also comes with a garage that is excellent for storage. The house also over looks the stunning greenery and pond on the estate. It's also conveniently located for Yateley village that includes its local shops, amenities, schools and pubs.

[01276 534100](tel:01276534100) / [james@seymours-blackwater.co.uk](mailto:james@seymours-blackwater.co.uk)



### Gale Close

Approximate Gross Internal Area = 81.9 sq m / 882 sq ft (excludes garage)



Whilst every attempt has been made to ensure the accuracy of the floor plan contained here, measurements of doors, windows, rooms and any other items are approximate and no responsibility is taken for any error, omission or mis-statement. This plan is for illustrative purposes only and should be used as such by any prospective purchaser.